



Baltimore City Community College

COMMISSION FOR FUNDING HIGHER EDUCATION

"Governors' abilities to increase the effectiveness of postsecondary pathways for the least well-served will determine states' long-term economic prosperity."

(2004 report by the National Governor's Assoc.)

October 29, 2007

Carolane Williams, President

Mission

Baltimore City Community College provides outstanding educational, cultural, and social experiences to the residents of Baltimore City, the State of Maryland, and surrounding areas. The College's accessible, affordable, comprehensive programs include college transfer and career preparation, technical training, and life skills training. The College provides a variety of student services that meet and support the learning needs for an increasingly diverse student population. BCCC is a dynamic higher education institution that is responsive to the changing needs of its stakeholders: individuals, businesses, government, and educational institutions of the community at large"

Baltimore City Demographics

- Baltimore City has one of the lowest participation rates in higher education in Maryland.
 - ✓ **26%** of adults in Baltimore who are 25 years or older do not have a high school diploma.
 - ✓ **55%** of the families with children are single heads of households.
 - ✓ **73%** have less than an Associate Degree.
 - ✓ **61%** of ninth graders fail to graduate from high school.
 - ✓ The dropout rate for Baltimore City public high schools is the highest in the State.

Baltimore City Demographics

- **19.5%** of the City's population lives below poverty level

	# Living Below Poverty	Median Incomes
✓ Baltimore City	123,116	\$20,791
✓ Baltimore County	66,140	59,995
✓ Prince George's	64,781	65,851
✓ Montgomery	42,878	87,624
✓ Anne Arundel County	23,428	79,160
✓ Howard County	11,443	41,512
✓ Harford County	7,966	69,549
✓ Carroll County	5,557	74,106

Source: U.S. Census Bureau, 2006 American Community Survey

States investing more in higher education see crime rates drop

- As previous research has shown, states with higher college enrollments have lower violent crime rates than states with lower college enrollments.
- Of the states with the 10 highest enrollment rates, nine had violent crime rates below the national average (Rhode Island, North Dakota, Iowa, Wyoming, Minnesota, Massachusetts, South Dakota, Utah and Mississippi).
- Conversely, of the states with the lowest college enrollments, five had violent crime rates above the U.S. average (Maryland, Illinois, California, Nevada and Alaska).

Sources: U.S. Census Bureau, FBI. Rates from 2000 – 2005, as cited in the Community College Times, September 28, 2007.

BCCC Facts

- Largest provider of undergraduate education in the city (more than 30% of BCPSS graduates that enroll in MD colleges or universities attend BCCC).
- Lowest tuition in city; third lowest in state.
- One of 3 oldest community colleges in state.
- Only true urban community college in state.

Open Access

- Serves approximately 20,000 students.
- Largest provider of GED training in the city (more than 2200 served in 07).
- Provided workforce training to more than 5,000 employees through business and industry sponsored contracts (07).

BCCC Demographics

- Many students struggle financially to meet the demands of parenthood, work, and school.
- **52%** have children.
- **60%** have annual household incomes under \$30,000.
- **33%** have annual household incomes \$20,000 or less.
- **45%** of BCCC students “stop-out” or leave college altogether reporting financial reasons as the major cause.

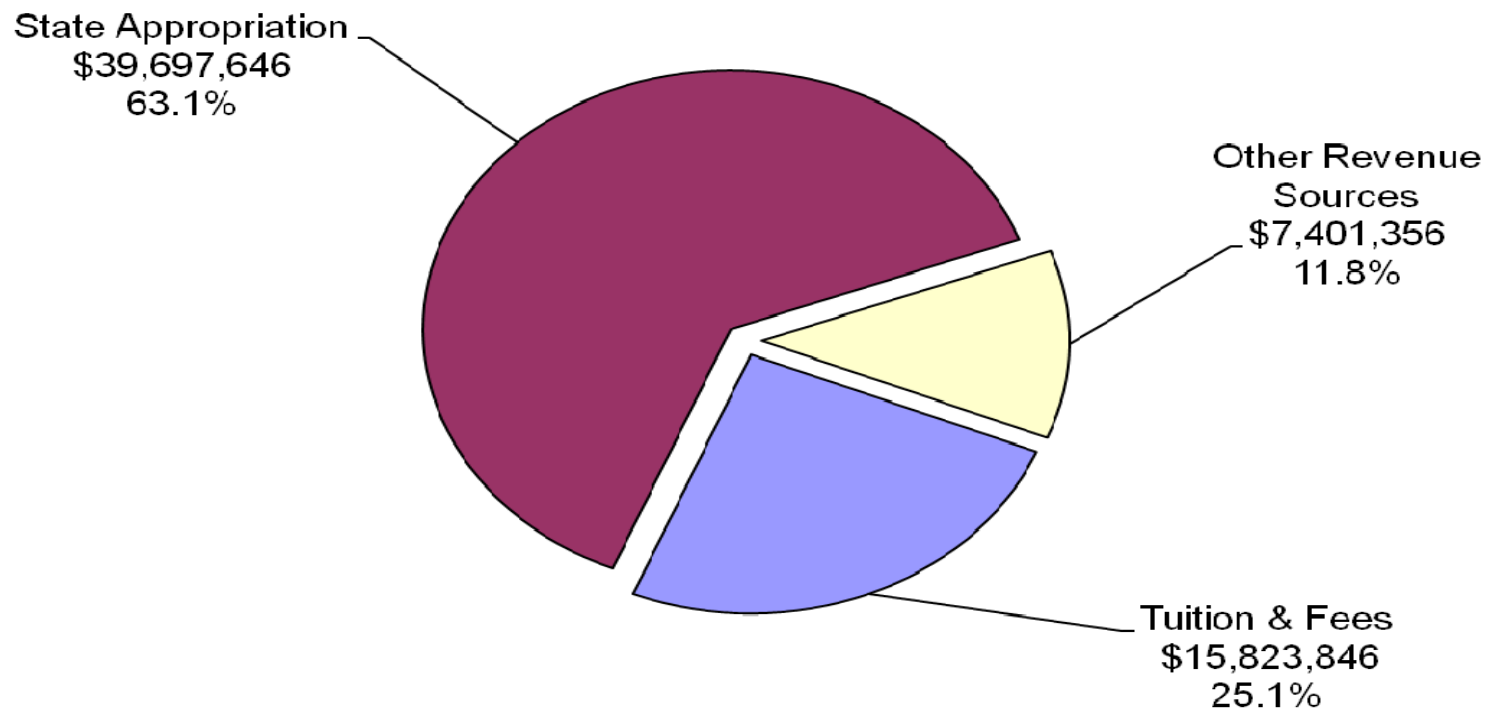
BCCC Demographics

- BCCC students need developmental courses more often and to a greater degree than their peers at other Maryland community colleges (77% of BCCC entrants last fall needed one or more developmental courses).

However, once BCCC students complete their developmental courses, they persist at the same rate as their peers at other Maryland community colleges.

BCCC Source of Unrestricted Funds

- Only state-sponsored community college.
- Funding based on percent of the State's General Fund appropriation per FTE student at USM (2008/66.5% - 2013/71%).



Recommendations

- Support USM and CC recommendations

AND:

- Special funding (similar to ESOL) for districts with disproportionately high numbers of low income, hard to serve student populations.
- Funding to support new or expanding programs in high demand/critical shortage careers.
- State support for Deferred Maintenance.
- Address needs for increased Capital Funding.

BCCC Main Building Capital Project

➤ Cost Escalation of the Main Building:

✓ Entire Project –
(1998 to present)
from \$47.2 million
to \$74.3 million

✓ Final Phase – (to date)
from \$18.7 million
to \$42.4 million

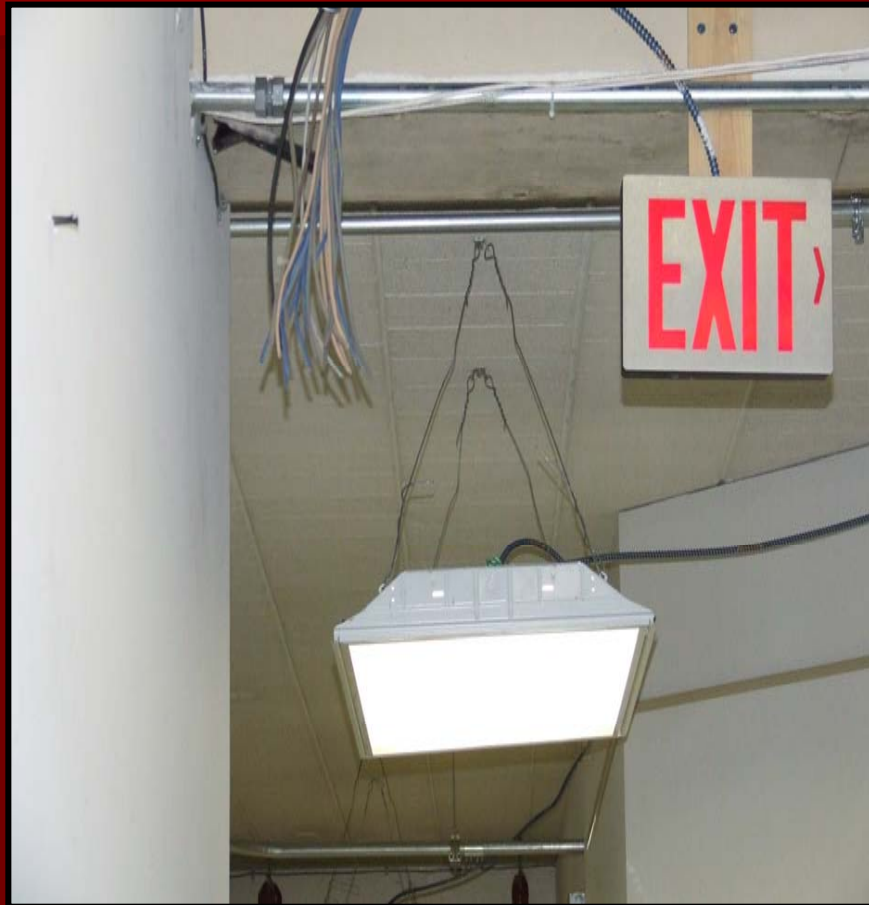


BCCC Main Building Capital Project

16 Years and Counting...

		State Funding
Fiscal Yr	BCCC Project Description	BCCC
1998	Preliminary Planning – Main Building	\$ 1.1
1999	Design Development – Main Building	\$ 0.6
2000	Design and Construction – Main Building Phase I	\$ 16.2
2001	Supplemental Design, Furniture & Equipment – Main Building Phase I	\$ 1.5
2002	No Funding	\$ 0
2003	Design – Main Building Phase III	\$ 1.2
2004	Supplemental Design and Construction – Main Building Phase III	\$ 14.7
2005	Furniture & Equipment – Phase III	\$ 0.7
2006	No Funding (project deferred)	\$ 0
2007	No Funding (project deferred)	\$ 0
2008	No Funding (project deferred)	\$ 0
2009	REQUEST DESIGN FUNDS (Slated for 2011)	\$ 0
2010	No Funding	\$ 0
2011	Design Costs – Main Building Phase II	\$ 2.2
2012	Construction Costs – Main Building Phase II	\$ 37.6
2013	Equipment Costs – Main Building Phase II	\$ 2.6 ₁₃

BCCC Main Building Capital Project



Baltimore City Community College



Changing Lives...Building Communities

Thank you for your support!