
Overview of State Aid to Local Governments Fiscal 2012 Allowance

**Department of Legislative Services
Office of Policy Analysis
Annapolis, Maryland**

January 2011

For further information concerning this document contact:

Library and Information Services
Office of Policy Analysis
Department of Legislative Services
90 State Circle
Annapolis, Maryland 21401

Baltimore Area: 410-946-5400 • Washington Area: 301-970-5400
Other Areas: 1-800-492-7122, Extension 5400
TDD: 410-946-5401 • 301-970-5401
Maryland Relay Service: 1-800-735-2258
E-mail: libr@mlis.state.md.us
Home Page: <http://mlis.state.md.us>

The Department of Legislative Services does not discriminate on the basis of age, ancestry, color, creed, marital status, national origin, race, religion, gender, sexual orientation, or disability in the admission or access to its programs, services, or activities. The Department's Information Officer has been designated to coordinate compliance with the nondiscrimination requirements contained in Section 35.107 of the Department of Justice Regulations. Requests for assistance should be directed to the Information Officer at the telephone numbers shown above.

Contents

State Aid by Governmental Entity 1

Annual Change in State Aid to Local Governments 2

Growth in State Aid Slowed Beginning in Fiscal 2009..... 3

State Aid Trends by Governmental Entity 4

Public Schools Receive Most of the Increases in State Aid 5

State Aid to County and Municipal Governments..... 6

State Aid to Local Governments

 Comparison by Per Capita Aid and Annual Growth..... 7

 Fiscal 2012 Allowance..... 8

 Fiscal 2011 Working Appropriation..... 9

 Dollar Difference Between Fiscal 2012 Allowance and Fiscal 2011 Working Appropriation..... 10

 Percent Change: Fiscal 2012 Allowance Over Fiscal 2011 Working Appropriation..... 11

State Aid Reductions from Statutorily Mandated Amounts Proposed in State Budget 12

Contingent Reductions to State Aid to Local Governments in Fiscal 2012..... 13

Proposed Growth in State Aid to Local Governments	14
Proposed State Aid Reductions and Expenditure Transfers	15
State Assumed Functions in Baltimore City	16
Disparity Grant Calculation.....	17
Transportation Trust Fund Revenues in Fiscal 2012.....	18
Counties and Municipalities Receive Small Share of Highway User Revenues	19
Highway User Revenue Over Five-year Period.....	20
Highway User Revenue Allocations in Fiscal 2012	21
State Funding under the Foundation Program in Fiscal 2012	22
Total State Aid to Public Schools in Fiscal 2012	23
Direct Aid to Public Schools and Teachers' Retirement Payments in Fiscal 2012	24
Comparison of Wealth per Pupil for State Education Aid Programs.....	25
Many School Systems Experiencing Decline in FTE Student Enrollment	26
Students Approved for Free and Reduced Priced Meals	27
Students Receiving Special Education Services	28
Students Identified as Limited English Proficient.....	29

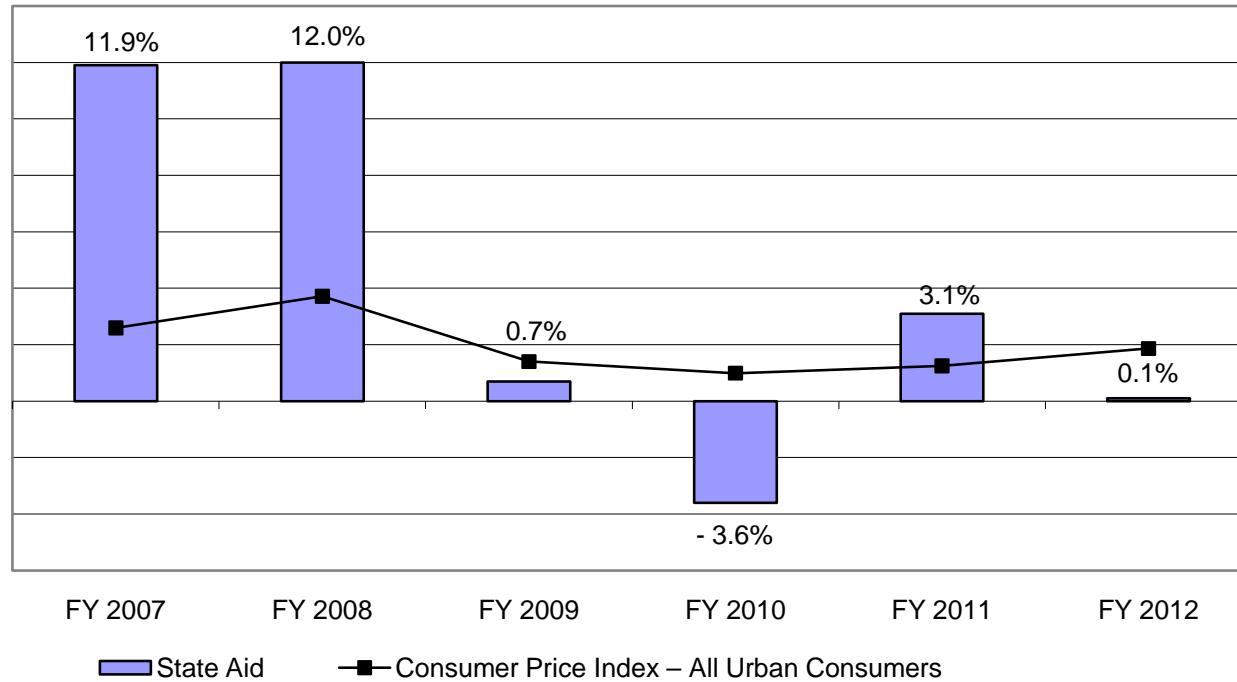
Racial Composition in Maryland Public Schools	30
Local Government Expenditures in Maryland.....	31
Local Government Expenditures by County	32

State Aid by Governmental Entity

(\$ in Millions)

	<u>FY 2012 State Aid Amount</u>	<u>Percent of Total</u>	<u>FY 2012 Aid Change</u>	<u>Percent Change</u>
Public Schools	\$5,716.1	88.5%	-\$1.4	0.0%
Libraries	65.4	1.0%	-0.2	-0.3%
Community Colleges	263.1	4.1%	4.9	1.9%
Local Health Departments	37.3	0.6%	0.0	0.0%
Counties/Municipalities	378.8	5.9%	3.5	0.9%
Total	\$6,460.5	100.0%	\$6.9	0.1%

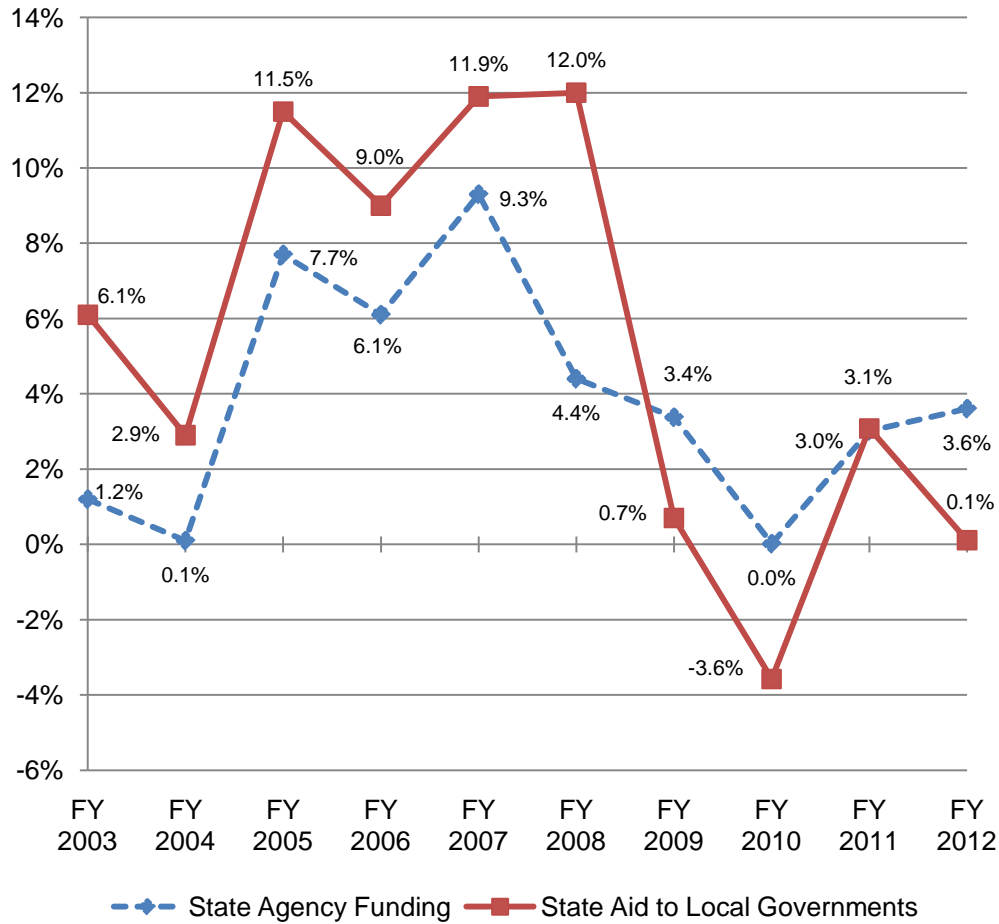
Annual Change in State Aid to Local Governments



State Aid by Governmental Entity (\$ in Millions)

	<u>FY 2007</u>	<u>FY 2012</u>	<u>\$ Change</u>	<u>% Change</u>
Public Schools	\$4,029.3	\$4,867.2	\$838.0	20.8%
Libraries	46.2	48.8	2.6	5.5%
Community Colleges	188.3	229.7	41.4	22.0%
Local Health	63.7	37.3	-26.4	-41.4%
County/Municipal	951.7	378.8	-572.9	-60.2%
Subtotal – Direct Aid	\$5,279.1	\$5,561.7	\$282.6	5.4%
Retirement Payments	474.8	898.8	423.9	89.3%
Total	\$5,754.0	\$6,460.5	\$706.5	12.3%

Growth in State Aid Slowed Beginning in Fiscal 2009



Average Annual Increase Fiscal 2002-2008

Public Schools	10.2%
Libraries	6.4%
Community Colleges	5.2%
Local Health Departments	2.6%
Counties/Municipalities	4.1%
Total State Aid	8.8%

Average Annual Increase Fiscal 2008-2012

Public Schools	2.6%
Libraries	0.5%
Community Colleges	2.1%
Local Health Departments	-13.6%
Counties/Municipalities	-19.6%
Total State Aid	0.1%

State Aid Trends by Governmental Entity

State Aid Amounts (\$ in Millions)

	<u>FY 2004</u>	<u>FY 2005</u>	<u>FY 2006</u>	<u>FY 2007</u>	<u>FY 2008</u>	<u>FY 2009</u>	<u>FY 2010</u>	<u>FY 2011</u>	<u>FY 2012</u>
Public Schools	\$3,310.4	\$3,624.9	\$4,009.0	\$4,475.4	\$5,166.3	\$5,379.2	\$5,506.3	\$5,717.5	\$5,716.1
Libraries	49.3	50.3	50.6	55.5	64.1	63.5	63.9	65.5	65.4
Community Colleges	174.9	184.0	191.6	205.9	241.7	254.7	256.2	258.1	263.1
Health Departments	60.4	60.9	61.9	63.7	67.0	57.4	37.3	37.3	37.3
Counties/Municipalities	636.5	796.6	829.9	953.5	906.8	738.2	397.2	375.2	378.8
Total	\$4,231.7	\$4,716.7	\$5,143.1	\$5,754.0	\$6,445.9	\$6,493.0	\$6,260.9	\$6,453.6	\$6,460.5

Percent Change in State Aid

	<u>FY 2004</u>	<u>FY 2005</u>	<u>FY 2006</u>	<u>FY 2007</u>	<u>FY 2008</u>	<u>FY 2009</u>	<u>FY 2010</u>	<u>FY 2011</u>	<u>FY 2012</u>
Public Schools	6.2%	9.5%	10.6%	11.6%	15.4%	4.1%	2.4%	3.8%	0.0%
Libraries	3.9%	1.9%	0.7%	9.6%	15.5%	-1.0%	0.7%	2.6%	-0.3%
Community Colleges	-4.6%	5.2%	4.1%	7.5%	17.4%	5.4%	0.6%	0.8%	1.9%
Health Departments	-2.4%	0.7%	1.6%	2.9%	5.2%	-14.4%	-35.0%	0.0%	0.0%
Counties/Municipalities	-9.6%	25.2%	4.2%	14.9%	-4.9%	-18.6%	-46.2%	-5.5%	0.9%
Total	2.9%	11.5%	9.0%	11.9%	12.0%	0.7%	-3.6%	3.1%	0.1%

Public Schools Receive Most of the Increases in State Aid

Annual Change in State Aid (\$ in Millions)

	<u>FY 2004</u>	<u>FY 2005</u>	<u>FY 2006</u>	<u>FY 2007</u>	<u>FY 2008</u>	<u>FY 2009</u>	<u>FY 2010</u>	<u>FY 2011</u>	<u>FY 2012</u>
Public Schools	\$193.4	\$314.5	\$384.1	\$466.4	\$690.9	\$212.9	\$127.1	\$211.1	-\$1.4
Libraries	1.8	0.9	0.4	4.9	8.6	-0.7	0.4	1.7	-0.2
Community Colleges	-8.4	9.1	7.6	14.3	35.8	13.0	1.5	1.9	4.9
Health Departments	-1.5	0.4	1.0	1.8	3.3	-9.6	-20.1	0.0	0.0
Counties/Municipalities	-67.6	160.1	33.3	123.6	-46.8	-168.5	-341.1	-21.9	3.5
Total	\$117.7	\$485.1	\$426.4	\$610.9	\$691.9	\$47.1	-\$232.1	\$192.8	\$6.9

Share of State Aid Change Since Fiscal 2003 (\$ in Millions)

	<u>Aid Change FY 2003-12</u>	<u>Annual Change</u>	<u>Percent of Aid Change</u>	<u>Share of FY 2003 Aid</u>	<u>Share of FY 2012 Aid</u>	<u>Percentage Point Difference</u>
Public Schools	\$2,599.0	7.0%	110.8%	75.8%	88.5%	12.7
Libraries	17.9	3.6%	0.8%	1.2%	1.0%	-0.1
Community Colleges	79.7	4.1%	3.4%	4.5%	4.1%	-0.4
Health Departments	-24.7	-5.5%	-1.1%	1.5%	0.6%	-0.9
Counties/Municipalities	-325.3	-6.7%	-13.9%	17.1%	5.9%	-11.3
Total	\$2,346.6	5.1%	100.0%	100.0%	100.0%	

State Aid to County and Municipal Governments

State Aid Amounts (\$ in Millions)

	<u>FY 2004</u>	<u>FY 2005</u>	<u>FY 2006</u>	<u>FY 2007</u>	<u>FY 2008</u>	<u>FY 2009</u>	<u>FY 2010</u>	<u>FY 2011</u>	<u>FY 2012</u>
Transportation	\$384.7	\$462.7	\$545.4	\$562.1	\$537.4	\$475.7	\$171.1	\$144.0	\$141.5
Public Safety	99.3	102.6	103.3	106.5	110.4	108.6	86.9	83.4	88.2
Land Preservation	20.6	16.5	46.3	135.6	97.1	20.1	9.2	15.3	8.8
Disparity Grants	105.8	93.1	96.6	109.5	114.8	115.5	121.4	121.4	110.9
Electric Utility Grant	26.2	30.6	30.6	30.6	29.6	0.0	0.0	0.0	0.0
Other Grants	-0.1	91.2	7.8	9.2	17.5	18.4	8.6	11.1	29.3
Total	\$636.5	\$796.6	\$829.9	\$953.5	\$906.8	\$738.2	\$397.2	\$375.2	\$378.8

Change in State Aid Since Fiscal 2003 (\$ in Millions)

	<u>Aid Change FY 2003-12</u>	<u>Annual Change</u>	<u>Share of FY 2003 Aid</u>	<u>Share of FY 2012 Aid</u>	<u>Percentage Point Difference</u>
Transportation	-\$298.7	-11.8%	62.5%	37.4%	-25.2
Public Safety	-2.0	-0.2%	12.8%	23.3%	10.5
Land Preservation	-9.9	-8.0%	2.7%	2.3%	-0.3
Disparity Grants	-4.3	-0.4%	16.4%	29.3%	12.9
Electric Utility Grant	-30.6	-100.0%	4.3%	0.0%	-4.3
Other Grants	20.2	13.9%	1.3%	7.7%	6.4
Total	-\$325.3	-6.7%	100.0%	100.0%	0.0

State Aid to Local Governments

Comparison by Per Capita Aid and Annual Growth

Fiscal 2011 and 2012

County	Fiscal 2011 Appropriation	Fiscal 2012 Allowance	Difference	Percent Difference	<u>Per Capita State Aid</u>	<u>Annual Growth in State Aid</u>		
Allegany	\$110,543,193	\$103,983,566	-\$6,559,627	-5.9%	1. Baltimore City	\$1,839	1. Montgomery	4.4%
Anne Arundel	412,183,133	424,734,980	12,551,847	3.0%	2. Caroline	1,564	2. Washington	4.4%
Baltimore City	1,191,038,050	1,172,489,143	-18,548,907	-1.6%	3. Wicomico	1,470	3. Worcester	3.7%
Baltimore	681,541,712	690,848,138	9,306,426	1.4%	4. Allegany	1,434	4. Anne Arundel	3.0%
Calvert	108,747,929	103,765,727	-4,982,202	-4.6%	5. Charles	1,339	5. Frederick	2.4%
Caroline	53,012,559	52,196,970	-815,589	-1.5%	6. Somerset	1,295	6. Charles	1.8%
Carroll	179,799,183	178,177,385	-1,621,798	-0.9%	7. Prince George's	1,265	7. Talbot	1.5%
Cecil	128,327,041	126,129,058	-2,197,983	-1.7%	8. Washington	1,265	8. Queen Anne's	1.4%
Charles	187,152,248	190,462,271	3,310,023	1.8%	9. Dorchester	1,264	9. Baltimore	1.4%
Dorchester	41,111,671	40,501,342	-610,329	-1.5%	10. Cecil	1,251	10. Howard	0.9%
Frederick	262,877,262	269,080,532	6,203,270	2.4%	11. Frederick	1,180	11. Carroll	-0.9%
Garrett	35,895,011	33,389,587	-2,505,424	-7.0%	12. Calvert	1,163	12. Wicomico	-1.3%
Harford	263,595,069	259,644,527	-3,950,542	-1.5%	13. Garrett	1,130	13. Somerset	-1.4%
Howard	293,648,971	296,400,933	2,751,962	0.9%	14. St. Mary's	1,089	14. Dorchester	-1.5%
Kent	13,890,228	13,586,324	-303,904	-2.2%	15. Harford	1,071	15. Harford	-1.5%
Montgomery	767,775,500	801,702,490	33,926,990	4.4%	16. Howard	1,051	16. Caroline	-1.5%
Prince George's	1,088,566,762	1,055,594,225	-32,972,537	-3.0%	17. Carroll	1,048	17. Baltimore City	-1.6%
Queen Anne's	41,408,309	41,990,635	582,326	1.4%	18. Queen Anne's	876	18. Cecil	-1.7%
St. Mary's	115,247,779	112,178,100	-3,069,679	-2.7%	19. Baltimore	875	19. Kent	-2.2%
Somerset	34,089,852	33,628,294	-461,558	-1.4%	20. Montgomery	825	20. St. Mary's	-2.7%
Talbot	17,808,197	18,083,945	275,748	1.5%	21. Anne Arundel	815	21. Prince George's	-3.0%
Washington	176,792,403	184,549,705	7,757,302	4.4%	22. Worcester	693	22. Calvert	-4.6%
Wicomico	140,403,961	138,510,941	-1,893,020	-1.3%	23. Kent	671	23. Allegany	-5.9%
Worcester	32,807,948	34,034,210	1,226,262	3.7%	24. Talbot	499	24. Garrett	-7.0%
Unallocated	75,376,797	84,856,566	9,479,769	12.6%				
Total	\$6,453,640,768	\$6,460,519,594	\$6,878,826	0.1%	Statewide Average	\$1,134	Statewide Average	0.1%

State Aid to Local Governments

Fiscal 2012 Allowance

(\$ in Thousands)

County	<i>Direct State Aid</i>						Retirement	Total	Change Over FY 2011	Percent Change
	County/ Municipal	Community Colleges	Public Schools	Libraries	Health	Subtotal				
Allegany	\$8,609	\$5,922	\$77,115	\$747	\$909	\$93,301	\$10,682	\$103,984	-\$6,560	-5.9%
Anne Arundel	16,374	28,911	298,967	1,965	3,142	349,358	75,377	424,735	12,552	3.0%
Baltimore City	221,537	0	856,789	6,346	6,675	1,091,347	81,142	1,172,489	-18,549	-1.6%
Baltimore	10,112	36,054	531,728	5,180	4,302	587,377	103,471	690,848	9,306	1.4%
Calvert	1,211	2,224	81,942	384	370	86,131	17,635	103,766	-4,982	-4.6%
Caroline	2,915	1,473	41,801	272	538	46,999	5,198	52,197	-816	-1.5%
Carroll	2,082	8,044	139,310	1,009	1,232	151,676	26,501	178,177	-1,622	-0.9%
Cecil	7,281	5,297	96,224	712	806	110,321	15,808	126,129	-2,198	-1.7%
Charles	1,835	7,048	153,900	817	995	164,594	25,868	190,462	3,310	1.8%
Dorchester	2,862	1,335	31,198	238	429	36,062	4,439	40,501	-610	-1.5%
Frederick	3,258	8,702	215,776	1,222	1,512	230,469	38,612	269,081	6,203	2.4%
Garrett	2,841	3,373	22,021	129	437	28,801	4,589	33,390	-2,505	-7.0%
Harford	3,163	10,287	206,062	1,523	1,737	222,773	36,871	259,645	-3,951	-1.5%
Howard	4,285	14,029	213,202	824	1,215	233,555	62,846	296,401	2,752	0.9%
Kent	612	590	9,504	91	336	11,132	2,454	13,586	-304	-2.2%
Montgomery	14,151	41,297	557,923	2,720	3,015	619,106	182,596	801,702	33,927	4.4%
Prince George's	31,997	22,993	858,906	5,606	5,007	924,510	131,085	1,055,594	-32,973	-3.0%
Queen Anne's	814	1,657	31,820	139	418	34,848	7,143	41,991	582	1.4%
St. Mary's	1,354	2,397	91,536	588	809	96,683	15,495	112,178	-3,070	-2.7%
Somerset	5,616	737	23,492	258	429	30,533	3,095	33,628	-462	-1.4%
Talbot	800	1,310	11,374	102	329	13,914	4,170	18,084	276	1.5%
Washington	2,052	7,889	151,284	1,146	1,381	163,752	20,797	184,550	7,757	4.4%
Wicomico	4,043	4,676	113,339	834	947	123,840	14,671	138,511	-1,893	-1.3%
Worcester	5,220	1,868	18,270	138	313	25,809	8,225	34,034	1,226	3.7%
Unallocated	23,732	11,565	33,756	15,803	0	84,857	0	84,857	9,480	12.6%
Total	\$378,756	\$229,679	\$4,867,239	\$48,791	\$37,283	\$5,561,748	\$898,771	\$6,460,520	\$6,879	0.1%

Note: County/Municipal includes the municipal share of police aid, highway user revenue, and fire aid.

State Aid to Local Governments

Fiscal 2011 Working Appropriation

(\$ in Thousands)

County	<i>Direct State Aid</i>					Subtotal	Retirement	Total
	County/ Municipal	Community Colleges	Public Schools	Libraries	Health			
Allegany	\$8,663	\$5,898	\$83,711	\$758	\$909	\$99,939	\$10,604	\$110,543
Anne Arundel	8,766	28,695	293,132	1,913	3,142	335,647	76,536	412,183
Baltimore City	222,346	0	872,053	6,461	6,675	1,107,535	83,503	1,191,038
Baltimore	10,807	36,335	525,104	5,249	4,302	581,797	99,745	681,542
Calvert	1,272	2,206	86,816	402	370	91,065	17,683	108,748
Caroline	2,935	1,434	42,583	273	538	47,764	5,249	53,013
Carroll	2,216	7,409	140,811	982	1,232	152,650	27,149	179,799
Cecil	5,624	5,252	100,262	717	806	112,661	15,666	128,327
Charles	1,964	7,042	150,663	791	995	161,454	25,698	187,152
Dorchester	2,874	1,293	31,712	244	429	36,552	4,560	41,112
Frederick	3,401	8,667	209,029	1,140	1,512	223,749	39,128	262,877
Garrett	2,860	3,343	24,442	155	437	31,237	4,658	35,895
Harford	3,358	10,240	209,548	1,548	1,737	226,430	37,165	263,595
Howard	4,632	13,901	210,063	770	1,215	230,581	63,068	293,649
Kent	581	589	9,840	96	336	11,442	2,448	13,890
Montgomery	15,108	40,821	524,710	2,662	3,015	586,315	181,460	767,776
Prince George's	42,250	22,412	879,759	5,648	5,007	955,076	133,491	1,088,567
Queen Anne's	846	1,682	31,385	132	418	34,463	6,945	41,408
St. Mary's	1,424	2,310	94,811	624	809	99,977	15,271	115,248
Somerset	5,629	808	23,743	263	429	30,874	3,216	34,090
Talbot	836	1,308	11,193	101	329	13,768	4,040	17,808
Washington	2,157	7,857	144,304	1,128	1,381	156,827	19,965	176,792
Wicomico	4,108	4,587	115,270	838	947	125,750	14,654	140,404
Worcester	4,010	1,849	17,996	138	313	24,306	8,502	32,808
Unallocated	16,580	8,463	34,676	15,658	0	75,377	0	75,377
Total	\$375,247	\$224,403	\$4,867,616	\$48,690	\$37,283	\$5,553,239	\$900,402	\$6,453,641

Note: County/Municipal includes the municipal share of police aid, highway user revenue, and fire aid.

State Aid to Local Governments

Dollar Difference Between Fiscal 2012 Allowance and Fiscal 2011 Working Appropriation
(\$ in Thousands)

County	<i>Direct State Aid</i>						Subtotal	Retirement	Total
	County/ Municipal	Community Colleges	Public Schools	Libraries	Health				
Allegany	-\$54	\$24	-\$6,596	-\$11	\$0	-\$6,638	\$79	-\$6,560	
Anne Arundel	7,608	216	5,835	52	0	13,711	-1,159	12,552	
Baltimore City	-809	0	-15,264	-115	0	-16,188	-2,361	-18,549	
Baltimore	-695	-281	6,625	-69	0	5,580	3,727	9,306	
Calvert	-61	18	-4,873	-18	0	-4,934	-48	-4,982	
Caroline	-20	39	-782	-2	0	-764	-51	-816	
Carroll	-134	634	-1,502	27	0	-974	-647	-1,622	
Cecil	1,657	45	-4,037	-5	0	-2,340	142	-2,198	
Charles	-129	6	3,237	25	0	3,140	170	3,310	
Dorchester	-12	42	-515	-5	0	-490	-121	-610	
Frederick	-144	34	6,747	82	0	6,720	-517	6,203	
Garrett	-19	30	-2,422	-26	0	-2,436	-69	-2,505	
Harford	-194	47	-3,485	-25	0	-3,657	-293	-3,951	
Howard	-347	129	3,139	54	0	2,974	-222	2,752	
Kent	31	0	-336	-5	0	-310	6	-304	
Montgomery	-956	476	33,213	59	0	32,791	1,136	33,927	
Prince George's	-10,253	581	-20,853	-41	0	-30,566	-2,406	-32,973	
Queen Anne's	-33	-25	435	8	0	384	198	582	
St. Mary's	-70	87	-3,275	-36	0	-3,293	224	-3,070	
Somerset	-13	-71	-251	-5	0	-341	-121	-462	
Talbot	-37	2	181	0	0	146	130	276	
Washington	-105	32	6,980	18	0	6,925	833	7,757	
Wicomico	-64	90	-1,931	-4	0	-1,910	17	-1,893	
Worcester	1,210	19	274	0	0	1,503	-277	1,226	
Unallocated	7,153	3,102	-920	145	0	9,480	0	9,480	
Total	\$3,510	\$5,276	-\$377	\$101	\$0	\$8,510	-\$1,631	\$6,879	

Note: County/Municipal includes the municipal share of police aid, highway user revenue, and fire aid.

State Aid to Local Governments

Percent Change: Fiscal 2012 Allowance over Fiscal 2011 Working Appropriation

County	<i>Direct State Aid</i>					Subtotal	Retirement	Total
	County/ Municipal	Community Colleges	Public Schools	Libraries	Health			
Allegany	-0.6%	0.4%	-7.9%	-1.5%	0.0%	-6.6%	0.7%	-5.9%
Anne Arundel	86.8%	0.8%	2.0%	2.7%	0.0%	4.1%	-1.5%	3.0%
Baltimore City	-0.4%	n/a	-1.8%	-1.8%	0.0%	-1.5%	-2.8%	-1.6%
Baltimore	-6.4%	-0.8%	1.3%	-1.3%	0.0%	1.0%	3.7%	1.4%
Calvert	-4.8%	0.8%	-5.6%	-4.6%	0.0%	-5.4%	-0.3%	-4.6%
Caroline	-0.7%	2.8%	-1.8%	-0.6%	0.0%	-1.6%	-1.0%	-1.5%
Carroll	-6.0%	8.6%	-1.1%	2.7%	0.0%	-0.6%	-2.4%	-0.9%
Cecil	29.5%	0.9%	-4.0%	-0.7%	0.0%	-2.1%	0.9%	-1.7%
Charles	-6.6%	0.1%	2.1%	3.2%	0.0%	1.9%	0.7%	1.8%
Dorchester	-0.4%	3.3%	-1.6%	-2.2%	0.0%	-1.3%	-2.6%	-1.5%
Frederick	-4.2%	0.4%	3.2%	7.2%	0.0%	3.0%	-1.3%	2.4%
Garrett	-0.7%	0.9%	-9.9%	-16.5%	0.0%	-7.8%	-1.5%	-7.0%
Harford	-5.8%	0.5%	-1.7%	-1.6%	0.0%	-1.6%	-0.8%	-1.5%
Howard	-7.5%	0.9%	1.5%	7.0%	0.0%	1.3%	-0.4%	0.9%
Kent	5.3%	0.1%	-3.4%	-4.9%	0.0%	-2.7%	0.2%	-2.2%
Montgomery	-6.3%	1.2%	6.3%	2.2%	0.0%	5.6%	0.6%	4.4%
Prince George's	-24.3%	2.6%	-2.4%	-0.7%	0.0%	-3.2%	-1.8%	-3.0%
Queen Anne's	-3.9%	-1.5%	1.4%	5.7%	0.0%	1.1%	2.9%	1.4%
St. Mary's	-4.9%	3.8%	-3.5%	-5.7%	0.0%	-3.3%	1.5%	-2.7%
Somerset	-0.2%	-8.8%	-1.1%	-2.0%	0.0%	-1.1%	-3.8%	-1.4%
Talbot	-4.4%	0.1%	1.6%	0.1%	0.0%	1.1%	3.2%	1.5%
Washington	-4.9%	0.4%	4.8%	1.6%	0.0%	4.4%	4.2%	4.4%
Wicomico	-1.6%	2.0%	-1.7%	-0.5%	0.0%	-1.5%	0.1%	-1.3%
Worcester	30.2%	1.0%	1.5%	-0.3%	0.0%	6.2%	-3.3%	3.7%
Unallocated	43.1%	36.7%	-2.7%	0.9%	n/a	12.6%	n/a	12.6%
TOTAL	0.9%	2.4%	0.0%	0.2%	0.0%	0.2%	-0.2%	0.1%

Note: County/Municipal includes the municipal share of police aid, highway user revenue, and fire aid.

State Aid Reductions from Statutorily Mandated Amounts Proposed in State Budget

Fiscal 2012
(\$ in Millions)

<u>Aid Program</u>	<u>Reduction Amount</u>	<u>Share of Total Funding</u>
Public Schools	\$93.7	1.9%
Library Aid	4.1	7.7%
Program Open Space	13.5	64.7%
Retirement Grants	79.9	8.2%
Total	\$191.2	2.9%

Contingent Reductions to State Aid to Local Governments in Fiscal 2012
From Statutorily Mandated Amounts

County	Public Schools	Program Open Space	Library Aid	Retirement			Total Effect
				K-12 Education	Library	Community College	
Allegany	-\$1,339,508	-\$155,000	-\$53,367	-\$803,829	-\$10,886	-\$178,699	-\$2,541,289
Anne Arundel	-5,862,970	-1,673,000	-141,107	-6,193,596	-109,120	-450,807	-14,430,601
Baltimore City	-15,475,595	-724,000	-453,669	-6,955,518	-161,417	0	-23,770,199
Baltimore	-10,823,437	-1,853,000	-370,845	-8,424,340	-181,001	-687,707	-22,340,330
Calvert	-1,637,353	-163,000	-27,516	-1,490,620	-28,854	-39,791	-3,387,134
Caroline	-782,741	-80,000	-19,445	-426,608	-11,031	-26,725	-1,346,550
Carroll	-2,780,072	-371,000	-72,258	-2,197,971	-59,672	-97,950	-5,578,922
Cecil	-1,970,684	-198,000	-50,944	-1,315,223	-29,310	-61,434	-3,625,594
Charles	-3,061,391	-335,000	-58,489	-2,156,059	-26,268	-126,083	-5,763,290
Dorchester	-610,016	-79,000	-17,063	-365,443	-7,343	-24,225	-1,103,090
Frederick	-4,395,687	-381,000	-87,543	-3,218,279	-62,319	-154,857	-8,299,685
Garrett	-387,337	-91,000	-9,257	-371,416	-8,226	-33,407	-900,643
Harford	-4,271,926	-572,000	-109,048	-2,990,081	-96,584	-216,301	-8,255,940
Howard	-4,254,233	-965,000	-59,280	-5,213,603	-127,574	-250,472	-10,870,162
Kent	-141,604	-139,000	-6,534	-202,557	-5,380	-10,699	-505,774
Montgomery	-10,745,360	-2,481,000	-194,320	-15,009,954	0	-1,067,608	-29,498,242
Prince George's	-16,691,299	-2,091,000	-401,297	-10,977,933	-163,530	-518,715	-30,843,774
Queen Anne's	-607,772	-103,000	-10,034	-595,677	-10,237	-30,064	-1,356,784
St. Mary's	-1,809,923	-185,000	-42,133	-1,306,914	-22,692	-42,882	-3,409,544
Somerset	-444,837	-49,000	-18,433	-259,133	-4,932	-10,853	-787,188
Talbot	-210,096	-107,000	-7,252	-340,419	-9,125	-23,770	-697,662
Washington	-2,971,370	-293,000	-81,960	-1,698,742	-32,844	-135,307	-5,213,223
Wicomico	-2,137,996	-203,000	-59,607	-1,222,720	-16,837	-68,854	-3,709,014
Worcester	-333,513	-203,000	-9,824	-685,335	-17,342	-27,500	-1,276,515
Unallocated	0	0	-1,717,116	0	0	0	-1,717,116
Total	-\$93,746,720	-\$13,494,000	-\$4,078,341	-\$74,421,970	-\$1,202,524	-\$4,284,708	-\$191,228,262

Proposed Growth in State Aid to Local Governments Fiscal 2012

County	FY 2011	Mandatory FY 2012	Percent Difference	Contingent Reductions	Proposed FY 2012	Percent Difference
Allegany	\$110,543,193	\$106,524,855	-3.6%	-\$2,541,289	\$103,983,566	-5.9%
Anne Arundel	412,183,133	439,165,581	6.5%	-14,430,601	424,734,980	3.0%
Baltimore City	1,191,038,050	1,196,259,342	0.4%	-23,770,199	1,172,489,143	-1.6%
Baltimore	681,541,712	713,188,468	4.6%	-22,340,330	690,848,138	1.4%
Calvert	108,747,929	107,152,861	-1.5%	-3,387,134	103,765,727	-4.6%
Caroline	53,012,559	53,543,520	1.0%	-1,346,550	52,196,970	-1.5%
Carroll	179,799,183	183,756,307	2.2%	-5,578,922	178,177,385	-0.9%
Cecil	128,327,041	129,754,652	1.1%	-3,625,594	126,129,058	-1.7%
Charles	187,152,248	196,225,561	4.8%	-5,763,290	190,462,271	1.8%
Dorchester	41,111,671	41,604,432	1.2%	-1,103,090	40,501,342	-1.5%
Frederick	262,877,262	277,380,217	5.5%	-8,299,685	269,080,532	2.4%
Garrett	35,895,011	34,290,230	-4.5%	-900,643	33,389,587	-7.0%
Harford	263,595,069	267,900,467	1.6%	-8,255,940	259,644,527	-1.5%
Howard	293,648,971	307,271,095	4.6%	-10,870,162	296,400,933	0.9%
Kent	13,890,228	14,092,098	1.5%	-505,774	13,586,324	-2.2%
Montgomery	767,775,500	831,200,732	8.3%	-29,498,242	801,702,490	4.4%
Prince George's	1,088,566,762	1,086,437,999	-0.2%	-30,843,774	1,055,594,225	-3.0%
Queen Anne's	41,408,309	43,347,419	4.7%	-1,356,784	41,990,635	1.4%
St. Mary's	115,247,779	115,587,644	0.3%	-3,409,544	112,178,100	-2.7%
Somerset	34,089,852	34,415,482	1.0%	-787,188	33,628,294	-1.4%
Talbot	17,808,197	18,781,607	5.5%	-697,662	18,083,945	1.5%
Washington	176,792,403	189,762,928	7.3%	-5,213,223	184,549,705	4.4%
Wicomico	140,403,961	142,219,955	1.3%	-3,709,014	138,510,941	-1.3%
Worcester	32,807,948	35,310,725	7.6%	-1,276,515	34,034,210	3.7%
Unallocated	75,376,797	86,573,682	14.9%	-1,717,116	84,856,566	12.6%
Total	\$6,453,640,768	\$6,651,747,856	3.1%	-\$191,228,262	\$6,460,519,594	0.1%

Proposed State Aid Reductions and Expenditure Transfers Fiscal 2012

County	<i>Expenditure Transfers</i>			Contingent Reductions	Total Impact	Share of Total Impact
	Property Valuations	Nonpublic Placements	Total Transfers			
Allegany	-\$672,125	\$0	-\$672,125	-\$2,541,289	-\$3,213,415	1.4%
Anne Arundel	-3,524,422	0	-3,524,422	-14,430,601	-17,955,023	7.8%
Baltimore City	-3,782,585	0	-3,782,585	-23,770,199	-27,552,784	12.0%
Baltimore	-4,808,347	0	-4,808,347	-22,340,330	-27,148,677	11.8%
Calvert	-698,373	0	-698,373	-3,387,134	-4,085,507	1.8%
Caroline	-234,260	0	-234,260	-1,346,550	-1,580,810	0.7%
Carroll	-1,066,459	0	-1,066,459	-5,578,922	-6,645,381	2.9%
Cecil	-732,306	0	-732,306	-3,625,594	-4,357,900	1.9%
Charles	-1,008,831	0	-1,008,831	-5,763,290	-6,772,121	2.9%
Dorchester	-340,955	0	-340,955	-1,103,090	-1,444,045	0.6%
Frederick	-1,138,654	0	-1,138,654	-8,299,685	-9,438,338	4.1%
Garrett	-421,352	0	-421,352	-900,643	-1,321,995	0.6%
Harford	-1,597,275	0	-1,597,275	-8,255,940	-9,853,215	4.3%
Howard	-1,616,107	0	-1,616,107	-10,870,162	-12,486,269	5.4%
Kent	-194,320	0	-194,320	-505,774	-700,094	0.3%
Montgomery	-4,974,333	0	-4,974,333	-29,498,242	-34,472,574	15.0%
Prince George's	-4,074,008	0	-4,074,008	-30,843,774	-34,917,782	15.2%
Queen Anne's	-365,408	0	-365,408	-1,356,784	-1,722,192	0.8%
St. Mary's	-752,038	0	-752,038	-3,409,544	-4,161,582	1.8%
Somerset	-234,948	0	-234,948	-787,188	-1,022,136	0.4%
Talbot	-306,863	0	-306,863	-697,662	-1,004,525	0.4%
Washington	-916,522	0	-916,522	-5,213,223	-6,129,745	2.7%
Wicomico	-739,231	0	-739,231	-3,709,014	-4,448,245	1.9%
Worcester	-611,266	0	-611,266	-1,276,515	-1,887,781	0.8%
Unallocated	0	-3,534,620	-3,534,620	-1,717,116	-5,251,736	2.3%
Total	-\$34,810,988	-\$3,534,620	-\$38,345,608	-\$191,228,262	-\$229,573,871	100.0%

State Assumed Functions in Baltimore City

(\$ in Millions)

State Assumed Functions	<u>FY 2010</u>	<u>FY 2011</u>	<u>FY 2012</u>	<u>Difference</u>	<u>Percent Difference</u>
Baltimore City Community College	\$40.2	\$40.9	\$41.0	\$0.1	0.1%
Baltimore City Detention Center	80.8	89.1	89.3	0.2	0.3%
Baltimore City Central Booking Facility	<u>46.6</u>	<u>48.9</u>	<u>51.1</u>	<u>2.2</u>	<u>4.6%</u>
Subtotal	\$167.5	\$178.9	\$181.4	\$2.5	1.4%
Direct Aid and Retirement Payments	<u>\$1,164.4</u>	<u>\$1,191.0</u>	<u>\$1,172.5</u>	<u>-\$18.5</u>	<u>-1.6%</u>
Total State Assistance	\$1,332.0	\$1,369.9	\$1,353.9	-\$16.0	-1.2%

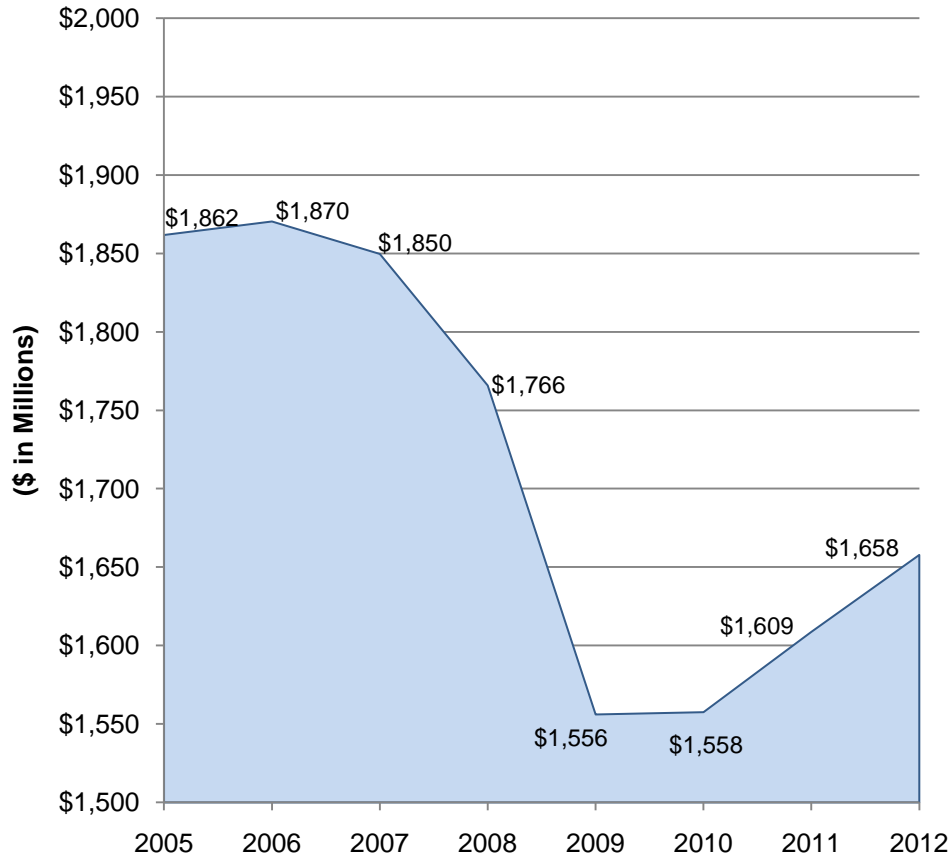
Disparity Grant Calculation Fiscal 2012

County	Population July 2009	TY 2009		Per Capita Grant	Prior Year Grant	Total Grant	Grant with Cap	Difference	Effect of Cap
		Adjusted Income Tax Revenues	Per Capita Tax Yield						
Allegany	72,532	\$20,875,330	\$287.81	\$108.50	\$7,298,505	\$7,869,912	\$7,298,505	\$0	-\$571,407
Anne Arundel	521,209	323,554,849	620.78	0.00	0	0	0	0	0
Baltimore City	637,418	172,305,192	270.32	125.99	79,051,790	80,310,680	79,051,790	0	-1,258,890
Baltimore	789,814	423,948,390	536.77	0.00	0	0	0	0	0
Calvert	89,212	50,496,344	566.03	0.00	0	0	0	0	0
Caroline	33,367	9,693,034	290.50	105.81	2,131,782	3,530,681	2,131,782	0	-1,398,899
Carroll	170,089	89,793,425	527.92	0.00	0	0	0	0	0
Cecil	100,796	39,762,700	394.49	1.82	0	183,880	0	0	-183,880
Charles	142,226	70,125,219	493.05	0.00	0	0	0	0	0
Dorchester	32,043	9,219,503	287.72	108.59	2,022,690	3,479,495	2,022,690	0	-1,456,805
Frederick	227,980	127,132,187	557.65	0.00	0	0	0	0	0
Garrett	29,555	9,101,463	307.95	88.36	2,131,271	2,611,514	2,131,271	0	-480,243
Harford	242,514	125,189,147	516.21	0.00	0	0	0	0	0
Howard	281,884	220,864,467	783.53	0.00	0	0	0	0	0
Kent	20,247	7,759,451	383.24	13.07	0	264,661	0	0	-264,661
Montgomery	971,600	783,509,396	806.41	0.00	0	0	0	0	0
Prince George's	834,560	319,559,534	382.91	13.40	21,694,767	11,185,914	11,185,914	-10,508,853	0
Queen Anne's	47,958	25,204,435	525.55	0.00	0	0	0	0	0
St. Mary's	102,999	52,160,783	506.42	0.00	0	0	0	0	0
Somerset	25,959	4,798,053	184.83	211.48	4,908,167	5,489,788	4,908,167	0	-581,621
Talbot	36,262	22,367,258	616.82	0.00	0	0	0	0	0
Washington	145,910	52,653,032	360.86	35.45	0	5,172,730	0	0	-5,172,730
Wicomico	94,222	30,981,605	328.81	67.50	2,197,041	6,359,626	2,197,041	0	-4,162,585
Worcester	49,122	20,634,249	420.06	0.00	0	0	0	0	0
Total	5,699,478	\$3,011,689,045	\$528.41	\$0.00	\$121,436,013	\$126,458,882	\$110,927,160	-\$10,508,853	-\$15,531,722

\$396.31 75% Target

Transportation Trust Fund Revenues in Fiscal 2012 (\$ in Millions)

Net Highway User Revenues



Fiscal 2010

Vehicle Fuel Taxes	\$721.3
Vehicle Titling Taxes	543.4
Vehicle Registration Fees	350.1
Local Highway User Revenues	\$163.5

Fiscal 2011

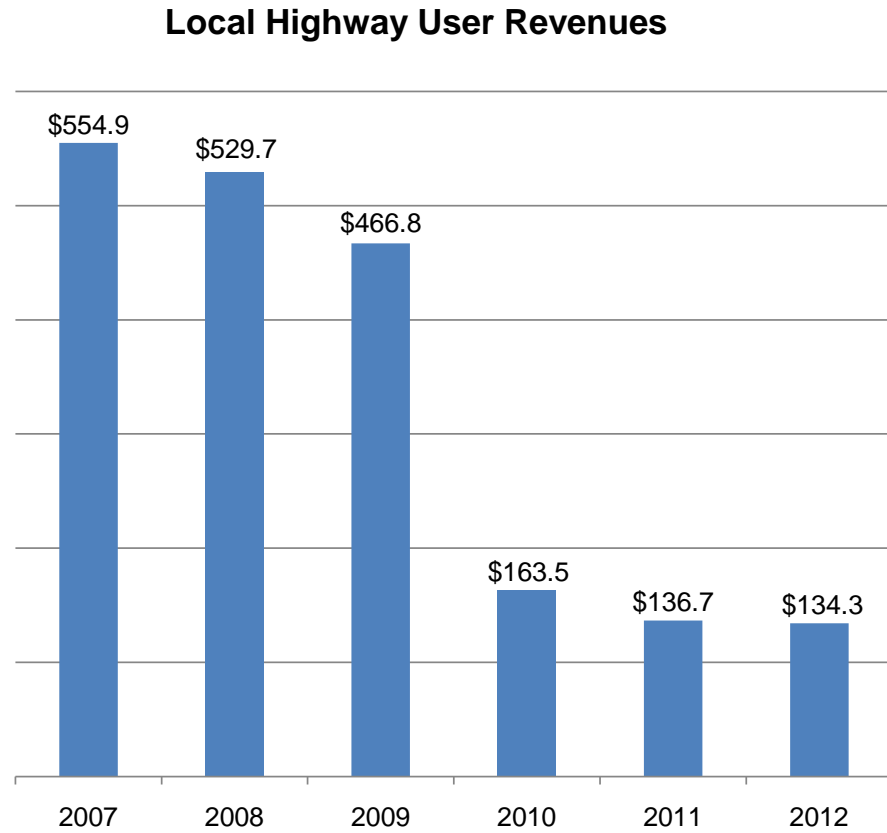
Vehicle Fuel Taxes	\$728.8
Vehicle Titling Taxes	571.0
Vehicle Registration Fees	364.1
Local Highway User Revenues	\$136.7

Fiscal 2012

Vehicle Fuel Taxes	\$737.6
Vehicle Titling Taxes	623.0
Vehicle Registration Fees	366.6
Local Highway User Revenues	\$134.3

Counties and Municipalities Receive Small Share of Highway User Revenues

(\$ in Millions)



Fiscal 2011

MDOT	\$1,102.0	68.5%
General Fund	370.0	23.0%
Baltimore City	127.1	7.9%
Counties	8.0	0.5%
Municipalities	1.6	0.1%
Total Distributions	\$1,608.7	100.0%

Fiscal 2012

MDOT	\$1,085.8	65.5%
General Fund	437.7	26.4%
Baltimore City	124.3	7.5%
Counties	8.3	0.5%
Municipalities	1.7	0.1%
Total Distributions	\$1,657.8	100.0%

Highway User Revenue over Five-year Period

County	FY 2007	FY 2011	FY 2012	Difference FY 07-12	% Difference FY 07-12
Allegany	\$7,438,060	\$226,306	\$233,203	-\$7,204,857	-96.9%
Anne Arundel	31,918,479	922,858	950,984	-30,967,495	-97.0%
Baltimore City	226,579,396	127,091,092	124,333,350	-102,246,046	-45.1%
Baltimore	43,239,662	1,219,476	1,256,642	-41,983,020	-97.1%
Calvert	6,537,119	205,876	212,150	-6,324,969	-96.8%
Caroline	5,097,930	148,376	152,898	-4,945,032	-97.0%
Carroll	14,462,628	426,703	439,707	-14,022,921	-97.0%
Cecil	8,012,061	235,713	242,897	-7,769,164	-97.0%
Charles	10,206,348	301,312	310,495	-9,895,853	-97.0%
Dorchester	5,675,076	165,449	170,492	-5,504,584	-97.0%
Frederick	18,961,583	573,909	591,400	-18,370,183	-96.9%
Garrett	6,421,992	184,465	190,087	-6,231,905	-97.0%
Harford	16,571,417	486,660	501,492	-16,069,925	-97.0%
Howard	15,956,386	457,067	470,997	-15,485,389	-97.0%
Kent	2,894,425	84,642	87,222	-2,807,203	-97.0%
Montgomery	45,276,129	1,337,217	1,377,971	-43,898,158	-97.0%
Prince George's	39,501,011	1,180,175	1,216,143	-38,284,868	-96.9%
Queen Anne's	5,863,186	167,845	172,960	-5,690,226	-97.1%
St. Mary's	7,790,620	229,592	236,589	-7,554,031	-97.0%
Somerset	3,399,282	97,471	100,442	-3,298,840	-97.0%
Talbot	4,675,038	140,807	145,098	-4,529,940	-96.9%
Washington	12,174,332	368,294	379,518	-11,794,814	-96.9%
Wicomico	9,295,983	281,889	290,480	-9,005,503	-96.9%
Worcester	6,940,174	210,386	216,798	-6,723,376	-96.9%
Total	\$554,888,317	\$136,743,580	\$134,280,018	-\$420,608,299	-75.8%

Highway User Revenue Allocations in Fiscal 2012

County	County Share	Municipal Share	Total Amount	% County	% Municipal
Allegany	\$143,871	\$89,332	\$233,203	61.7%	38.3%
Anne Arundel	878,877	72,107	950,984	92.4%	7.6%
Baltimore City	124,333,350	0	124,333,350	100.0%	0.0%
Baltimore	1,256,642	0	1,256,642	100.0%	0.0%
Calvert	191,425	20,725	212,150	90.2%	9.8%
Caroline	122,042	30,856	152,898	79.8%	20.2%
Carroll	339,810	99,897	439,707	77.3%	22.7%
Cecil	197,613	45,284	242,897	81.4%	18.6%
Charles	282,508	27,987	310,495	91.0%	9.0%
Dorchester	134,078	36,414	170,492	78.6%	21.4%
Frederick	409,355	182,045	591,400	69.2%	30.8%
Garrett	162,254	27,833	190,087	85.4%	14.6%
Harford	421,657	79,836	501,492	84.1%	15.9%
Howard	470,997	0	470,997	100.0%	0.0%
Kent	70,048	17,173	87,222	80.3%	19.7%
Montgomery	1,114,814	263,158	1,377,971	80.9%	19.1%
Prince George's	872,763	343,380	1,216,143	71.8%	28.2%
Queen Anne's	161,398	11,562	172,960	93.3%	6.7%
St. Mary's	230,905	5,684	236,589	97.6%	2.4%
Somerset	87,170	13,272	100,442	86.8%	13.2%
Talbot	100,632	44,466	145,098	69.4%	30.6%
Washington	268,180	111,338	379,518	70.7%	29.3%
Wicomico	214,511	75,969	290,480	73.8%	26.2%
Worcester	157,339	59,459	216,798	72.6%	27.4%
Total	\$132,622,240	\$1,657,778	\$134,280,018	98.8%	1.2%

State Funding under the Foundation Program in Fiscal 2012

County	FTE Enrollment	Foundation Formula	Supplemental Grant	Geographic Cost Index	Total - Foundation	<u>Ranking by Per Pupil Aid</u>	
Allegany	8,515	\$40,155,566	\$10,348	\$0	\$40,165,914	1.	Baltimore City \$5,215
Anne Arundel	73,655	184,111,507	0	8,947,726	193,059,233	2.	Allegany 4,717
Baltimore City	78,619	369,421,201	18,310,935	22,285,185	410,017,321	3.	Caroline 4,670
Baltimore	100,328	326,060,682	0	5,416,923	331,477,605	4.	Wicomico 4,560
Calvert	16,375	57,836,584	0	2,320,812	60,157,396	5.	Somerset 4,396
Caroline	5,174	23,191,754	966,820	0	24,158,574	6.	Washington 4,241
Carroll	27,061	101,002,808	-117,565	2,556,862	103,442,105	7.	Prince George's 4,239
Cecil	15,347	61,804,510	49,059	0	61,853,569	8.	Dorchester 4,210
Charles	25,955	103,952,829	0	3,503,338	107,456,167	9.	Charles 4,140
Dorchester	4,372	17,083,027	1,321,515	0	18,404,542	10.	Cecil 4,030
Frederick	39,163	148,911,932	0	6,343,466	155,255,398	11.	Frederick 3,964
Garrett	4,084	11,400,722	1,201,160	0	12,601,882	12.	St. Mary's 3,904
Harford	37,590	141,405,813	-6,103	0	141,399,710	13.	Carroll 3,823
Howard	49,946	151,371,072	0	5,056,309	156,427,381	14.	Harford 3,762
Kent	2,035	2,983,618	1,003,415	137,342	4,124,375	15.	Calvert 3,674
Montgomery	140,402	286,234,231	0	32,217,371	318,451,602	16.	Baltimore 3,304
Prince George's	119,806	448,490,349	20,505,652	38,811,312	507,807,313	17.	Howard 3,132
Queen Anne's	7,489	20,408,208	0	555,976	20,964,184	18.	Garrett 3,086
St. Mary's	16,442	60,713,922	3,251,181	221,931	64,187,034	19.	Queen Anne's 2,799
Somerset	2,701	11,871,407	0	0	11,871,407	20.	Anne Arundel 2,621
Talbot	4,257	4,214,039	0	0	4,214,039	21.	Montgomery 2,268
Washington	21,646	91,798,553	0	0	91,798,553	22.	Kent 2,027
Wicomico	13,832	63,076,910	0	0	63,076,910	23.	Worcester 990
Worcester	6,317	6,252,635	0	0	6,252,635	24.	Talbot 990
Total	821,109	\$2,733,753,879	\$46,496,417	\$128,374,553	\$2,908,624,849		State Average \$3,542

Total State Aid to Public Schools in Fiscal 2012

<u>County</u>	<u>FTE Enrollment</u>	<u>Total State Education Aid</u>	<u>Per Pupil Amount</u>	<u>Ranking by Per Pupil Aid</u>	
Allegany	8,515	\$86,282,933	\$10,133	1.	Baltimore City \$11,907
Anne Arundel	73,655	369,609,220	5,018	2.	Allegany 10,133
Baltimore City	78,619	936,121,430	11,907	3.	Somerset 9,794
Baltimore	100,328	627,813,733	6,258	4.	Wicomico 9,202
Calvert	16,375	98,943,790	6,042	5.	Caroline 9,020
Caroline	5,174	46,666,976	9,020	6.	Prince George's 8,214
Carroll	27,061	164,379,153	6,074	7.	Dorchester 8,089
Cecil	15,347	111,225,334	7,247	8.	Washington 7,884
Charles	25,955	178,491,799	6,877	9.	Cecil 7,247
Dorchester	4,372	35,365,697	8,089	10.	Charles 6,877
Frederick	39,163	252,482,519	6,447	11.	St. Mary's 6,474
Garrett	4,084	26,256,875	6,429	12.	Frederick 6,447
Harford	37,590	240,166,260	6,389	13.	Garrett 6,429
Howard	49,946	272,666,773	5,459	14.	Harford 6,389
Kent	2,035	11,813,869	5,805	15.	Baltimore 6,258
Montgomery	140,402	729,122,269	5,193	16.	Carroll 6,074
Prince George's	119,806	984,117,154	8,214	17.	Calvert 6,042
Queen Anne's	7,489	38,613,651	5,156	18.	Kent 5,805
St. Mary's	16,442	106,442,449	6,474	19.	Howard 5,459
Somerset	2,701	26,447,682	9,794	20.	Montgomery 5,193
Talbot	4,257	15,256,274	3,584	21.	Queen Anne's 5,156
Washington	21,646	170,659,818	7,884	22.	Anne Arundel 5,018
Wicomico	13,832	127,285,301	9,202	23.	Worcester 4,130
Worcester	6,317	26,087,182	4,130	24.	Talbot 3,584
Unallocated	0	33,756,256	41		
Total	821,109	\$5,716,074,399	\$6,961		

Direct Aid to Public Schools and Teachers' Retirement Payments in Fiscal 2012

County	Direct Aid	Retirement	Ranking by <u>Per Pupil Direct Aid</u>		Ranking by <u>Per Pupil Retirement</u>			
Allegany	\$77,114,686	\$9,168,247	1.	Baltimore City	\$10,898	1.	Worcester	\$1,237
Anne Arundel	298,966,853	70,642,367	2.	Allegany	9,056	2.	Montgomery	1,219
Baltimore City	856,788,800	79,332,630	3.	Somerset	8,699	3.	Howard	1,191
Baltimore	531,728,136	96,085,597	4.	Wicomico	8,194	4.	Kent	1,135
Calvert	81,942,204	17,001,586	5.	Caroline	8,080	5.	Somerset	1,094
Caroline	41,801,203	4,865,773	6.	Prince George's	7,169	6.	Allegany	1,077
Carroll	139,309,725	25,069,428	7.	Dorchester	7,136	7.	Prince George's	1,045
Cecil	96,224,279	15,001,055	8.	Washington	6,989	8.	Calvert	1,038
Charles	153,900,405	24,591,394	9.	Cecil	6,270	9.	Garrett	1,037
Dorchester	31,197,562	4,168,135	10.	Charles	5,930	10.	Baltimore City	1,009
Frederick	215,775,754	36,706,765	11.	St. Mary's	5,567	11.	Wicomico	1,008
Garrett	22,020,612	4,236,263	12.	Frederick	5,510	12.	Cecil	977
Harford	206,062,260	34,104,000	13.	Harford	5,482	13.	Anne Arundel	959
Howard	213,201,922	59,464,851	14.	Garrett	5,392	14.	Baltimore	958
Kent	9,503,558	2,310,311	15.	Baltimore	5,300	15.	Dorchester	953
Montgomery	557,923,056	171,199,213	16.	Carroll	5,148	16.	Charles	947
Prince George's	858,906,026	125,211,128	17.	Calvert	5,004	17.	Caroline	941
Queen Anne's	31,819,533	6,794,118	18.	Kent	4,670	18.	Frederick	937
St. Mary's	91,536,163	14,906,286	19.	Howard	4,269	19.	Carroll	926
Somerset	23,492,085	2,955,597	20.	Queen Anne's	4,249	20.	Talbot	912
Talbot	11,373,557	3,882,717	21.	Anne Arundel	4,059	21.	Harford	907
Washington	151,284,452	19,375,366	22.	Montgomery	3,974	22.	Queen Anne's	907
Wicomico	113,339,304	13,945,997	23.	Worcester	2,892	23.	St. Mary's	907
Worcester	18,270,452	7,816,730	24.	Talbot	2,672	24.	Washington	895
Unallocated	33,756,256	0						
Total	\$4,867,238,843	\$848,835,556		Statewide	\$5,928		Statewide	\$1,034

Comparison of Wealth Per Pupil for State Education Aid Programs Fiscal 2011 and 2012

County	Fiscal 2011	Fiscal 2012	Percent Difference	<u>Per Pupil Wealth</u>	<u>Growth in Per Pupil Wealth</u>		
Allegany	\$272,517	\$288,435	5.8%	1. Worcester	\$1,276,025	1. Garrett	7.5%
Anne Arundel	648,477	627,838	-3.2%	2. Talbot	1,121,952	2. Allegany	5.8%
Baltimore City	290,050	291,014	0.3%	3. Kent	786,125	3. Calvert	3.7%
Baltimore	525,394	512,928	-2.4%	4. Montgomery	698,439	4. St. Mary's	2.9%
Calvert	452,950	469,728	3.7%	5. Anne Arundel	627,838	5. Prince George's	0.9%
Caroline	324,375	324,109	-0.1%	6. Queen Anne's	593,312	6. Cecil	0.6%
Carroll	452,808	439,029	-3.0%	7. Garrett	583,132	7. Baltimore City	0.3%
Cecil	391,395	393,895	0.6%	8. Howard	546,509	8. Kent	0.3%
Charles	413,751	397,256	-4.0%	9. Baltimore	512,928	9. Caroline	-0.1%
Dorchester	412,813	412,238	-0.1%	10. Calvert	469,728	10. Dorchester	-0.1%
Frederick	454,814	428,321	-5.8%	11. St. Mary's	445,122	11. Harford	-0.2%
Garrett	542,523	583,132	7.5%	12. Carroll	439,029	12. Somerset	-0.6%
Harford	435,418	434,535	-0.2%	13. Prince George's	437,339	13. Wicomico	-1.3%
Howard	566,901	546,509	-3.6%	14. Harford	434,535	14. Talbot	-1.8%
Kent	783,593	786,125	0.3%	15. Frederick	428,321	15. Baltimore	-2.4%
Montgomery	740,535	698,439	-5.7%	16. Dorchester	412,238	16. Carroll	-3.0%
Prince George's	433,556	437,339	0.9%	17. Charles	397,256	17. Anne Arundel	-3.2%
Queen Anne's	617,757	593,312	-4.0%	18. Cecil	393,895	18. Howard	-3.6%
St. Mary's	432,658	445,122	2.9%	19. Washington	361,141	19. Queen Anne's	-4.0%
Somerset	339,417	337,402	-0.6%	20. Somerset	337,402	20. Charles	-4.0%
Talbot	1,142,003	1,121,952	-1.8%	21. Caroline	324,109	21. Montgomery	-5.7%
Washington	383,087	361,141	-5.7%	22. Wicomico	312,264	22. Washington	-5.7%
Wicomico	316,297	312,264	-1.3%	23. Baltimore City	291,014	23. Frederick	-5.8%
Worcester	1,371,358	1,276,025	-7.0%	24. Allegany	288,435	24. Worcester	-7.0%
Total	\$518,733	\$505,337	-2.6%	Statewide	\$505,337	Statewide	-2.6%

Many School Systems Experiencing Decline in FTE Student Enrollment September 2009 (Fiscal 2011) and September 2010 (Fiscal 2012)

County	Fiscal 2011	Fiscal 2012	Percent Difference	<u>FTES Enrollment Growth</u>		<u>Percent Change FTES Enrollment</u>	
Allegany	8,692	8,515	-2.0%	1. Montgomery	2,262	1. Montgomery	1.6%
Anne Arundel	72,915	73,655	1.0%	2. Baltimore	817	2. Washington	1.2%
Baltimore City	77,909	78,619	0.9%	3. Anne Arundel	740	3. Anne Arundel	1.0%
Baltimore	99,512	100,328	0.8%	4. Baltimore City	710	4. Baltimore City	0.9%
Calvert	16,626	16,375	-1.5%	5. Howard	311	5. Worcester	0.8%
Caroline	5,224	5,174	-1.0%	6. Washington	262	6. Baltimore	0.8%
Carroll	27,418	27,061	-1.3%	7. Frederick	99	7. Howard	0.6%
Cecil	15,620	15,347	-1.7%	8. St. Mary's	66	8. St. Mary's	0.4%
Charles	25,897	25,955	0.2%	9. Charles	58	9. Frederick	0.3%
Dorchester	4,412	4,372	-0.9%	10. Worcester	53	10. Charles	0.2%
Frederick	39,064	39,163	0.3%	11. Queen Anne's	12	11. Queen Anne's	0.2%
Garrett	4,183	4,084	-2.4%	12. Somerset	-2	12. Somerset	-0.1%
Harford	37,697	37,590	-0.3%	13. Talbot	-16	13. Harford	-0.3%
Howard	49,635	49,946	0.6%	14. Kent	-25	14. Prince George's	-0.3%
Kent	2,060	2,035	-1.2%	15. Dorchester	-40	15. Talbot	-0.4%
Montgomery	138,139	140,402	1.6%	16. Caroline	-51	16. Dorchester	-0.9%
Prince George's	120,171	119,806	-0.3%	17. Garrett	-99	17. Wicomico	-0.9%
Queen Anne's	7,477	7,489	0.2%	18. Harford	-107	18. Caroline	-1.0%
St. Mary's	16,376	16,442	0.4%	19. Wicomico	-130	19. Kent	-1.2%
Somerset	2,702	2,701	-0.1%	20. Allegany	-177	20. Carroll	-1.3%
Talbot	4,273	4,257	-0.4%	21. Calvert	-251	21. Calvert	-1.5%
Washington	21,383	21,646	1.2%	22. Cecil	-273	22. Cecil	-1.7%
Wicomico	13,962	13,832	-0.9%	23. Carroll	-357	23. Allegany	-2.0%
Worcester	6,264	6,317	0.8%	24. Prince George's	-365	24. Garrett	-2.4%
Total	817,610	821,109	0.4%	Statewide	3,498	Statewide	0.4%

Students Approved for Free and Reduced Priced Meals Fiscal 2011 and 2012

County	Fiscal 2011	Fiscal 2012	Percent Difference	FRPM Count as Percent of Total Enrollment		Change in FRPM Count	
Allegany	4,296	4,329	0.8%	1. Baltimore City	83.6%	1. Calvert	13.5%
Anne Arundel	18,498	20,120	8.8%	2. Somerset	65.5%	2. Howard	11.0%
Baltimore City	65,682	65,957	0.4%	3. Dorchester	58.0%	3. Frederick	8.8%
Baltimore	39,054	42,029	7.6%	4. Prince George's	52.7%	4. Anne Arundel	8.8%
Calvert	3,013	3,421	13.5%	5. Caroline	51.8%	5. Wicomico	8.7%
Caroline	2,631	2,679	1.8%	6. Allegany	50.8%	6. St. Mary's	8.2%
Carroll	3,829	4,058	6.0%	7. Wicomico	50.6%	7. Baltimore	7.6%
Cecil	5,455	5,720	4.9%	8. Kent	48.1%	8. Queen Anne's	7.4%
Charles	6,844	7,232	5.7%	9. Garrett	45.1%	9. Washington	7.0%
Dorchester	2,419	2,539	5.0%	10. Washington	44.5%	10. Kent	6.8%
Frederick	7,902	8,600	8.8%	11. Baltimore	41.8%	11. Carroll	6.0%
Garrett	1,947	1,846	-5.2%	12. Worcester	41.2%	12. Harford	5.9%
Harford	9,464	10,024	5.9%	13. Cecil	37.3%	13. Montgomery	5.9%
Howard	7,149	7,937	11.0%	14. Talbot	35.0%	14. Charles	5.7%
Kent	917	979	6.8%	15. Montgomery	29.2%	15. Talbot	5.3%
Montgomery	38,762	41,036	5.9%	16. St. Mary's	27.8%	16. Worcester	5.3%
Prince George's	61,663	63,318	2.7%	17. Charles	27.8%	17. Dorchester	5.0%
Queen Anne's	1,525	1,638	7.4%	18. Anne Arundel	27.3%	18. Cecil	4.9%
St. Mary's	4,235	4,582	8.2%	19. Harford	26.7%	19. Prince George's	2.7%
Somerset	1,743	1,773	1.7%	20. Frederick	21.9%	20. Caroline	1.8%
Talbot	1,414	1,489	5.3%	21. Queen Anne's	21.9%	21. Somerset	1.7%
Washington	9,019	9,652	7.0%	22. Calvert	20.8%	22. Allegany	0.8%
Wicomico	6,665	7,243	8.7%	23. Howard	15.9%	23. Baltimore City	0.4%
Worcester	2,480	2,611	5.3%	24. Carroll	15.0%	24. Garrett	-5.2%
Total	306,606	320,812	4.6%	Statewide	39.0%	Statewide	4.6%

FRPM = Free and Reduced Priced Meals

Students Receiving Special Education Services Fiscal 2011 and 2012

County	Fiscal 2011	Fiscal 2012	Percent Difference	Special Education Students as Percent of Total Enrollment	Change in Special Education Students		
Allegany	1,337	1,309	-2.1%	1. Baltimore City	17.7%	1. Somerset	7.9%
Anne Arundel	7,882	7,994	1.4%	2. Somerset	16.1%	2. Worcester	5.2%
Baltimore City	13,893	13,970	0.6%	3. Allegany	15.4%	3. Talbot	5.1%
Baltimore	13,310	13,402	0.7%	4. Kent	15.2%	4. Harford	4.5%
Calvert	1,808	1,672	-7.5%	5. Harford	14.7%	5. Howard	4.3%
Caroline	555	559	0.7%	6. Cecil	13.6%	6. Montgomery	2.5%
Carroll	3,312	3,299	-0.4%	7. Baltimore	13.3%	7. Queen Anne's	2.3%
Cecil	2,128	2,084	-2.1%	8. Queen Anne's	12.7%	8. Anne Arundel	1.4%
Charles	2,365	2,397	1.4%	9. Montgomery	12.3%	9. Charles	1.4%
Dorchester	454	454	0.0%	10. Carroll	12.2%	10. Caroline	0.7%
Frederick	4,569	4,527	-0.9%	11. Prince George's	12.0%	11. Baltimore	0.7%
Garrett	532	490	-7.9%	12. Garrett	12.0%	12. Baltimore City	0.6%
Harford	5,277	5,517	4.5%	13. Wicomico	11.9%	13. Dorchester	0.0%
Howard	4,422	4,611	4.3%	14. Worcester	11.8%	14. Carroll	-0.4%
Kent	344	310	-9.9%	15. Frederick	11.5%	15. Prince George's	-0.5%
Montgomery	16,898	17,321	2.5%	16. St. Mary's	11.3%	16. Wicomico	-0.5%
Prince George's	14,503	14,427	-0.5%	17. Washington	11.0%	17. Frederick	-0.9%
Queen Anne's	928	949	2.3%	18. Anne Arundel	10.8%	18. Cecil	-2.1%
St. Mary's	1,990	1,855	-6.8%	19. Caroline	10.8%	19. Allegany	-2.1%
Somerset	404	436	7.9%	20. Dorchester	10.4%	20. Washington	-3.2%
Talbot	370	389	5.1%	21. Calvert	10.2%	21. St. Mary's	-6.8%
Washington	2,459	2,381	-3.2%	22. Howard	9.2%	22. Calvert	-7.5%
Wicomico	1,710	1,701	-0.5%	23. Charles	9.2%	23. Garrett	-7.9%
Worcester	709	746	5.2%	24. Talbot	9.1%	24. Kent	-9.9%
Total	102,159	102,800	0.6%	Statewide	12.5%	Statewide	0.6%

Students Identified as Limited English Proficient Fiscal 2011 and 2012

County	Fiscal 2011	Fiscal 2012	Percent Difference	LEP Students as Percent of Total Enrollment	Change in LEP Students		
Allegany	25	15	-40.0%	1. Montgomery	13.4%	1. Garrett	33.3%
Anne Arundel	2,452	2,723	11.1%	2. Prince George's	11.9%	2. Talbot	19.1%
Baltimore City	1,825	2,167	18.7%	3. Talbot	4.5%	3. Baltimore City	18.7%
Baltimore	3,365	3,466	3.0%	4. Howard	4.2%	4. Cecil	17.5%
Calvert	173	143	-17.3%	5. Frederick	3.8%	5. Charles	16.2%
Caroline	173	184	6.4%	6. Anne Arundel	3.7%	6. Frederick	15.1%
Carroll	167	171	2.4%	7. Caroline	3.6%	7. Montgomery	13.6%
Cecil	126	148	17.5%	8. Baltimore	3.4%	8. Wicomico	12.0%
Charles	173	201	16.2%	9. Kent	3.1%	9. Anne Arundel	11.1%
Dorchester	79	67	-15.2%	10. Somerset	3.0%	10. Kent	6.8%
Frederick	1,305	1,502	15.1%	11. Wicomico	2.8%	11. Caroline	6.4%
Garrett	3	4	33.3%	12. Baltimore City	2.7%	12. Prince George's	4.5%
Harford	445	423	-4.9%	13. Worcester	2.2%	13. Washington	4.4%
Howard	2,082	2,078	-0.2%	14. Washington	1.9%	14. Baltimore	3.0%
Kent	59	63	6.8%	15. Queen Anne's	1.6%	15. Carroll	2.4%
Montgomery	16,531	18,779	13.6%	16. Dorchester	1.5%	16. Somerset	0.0%
Prince George's	13,681	14,291	4.5%	17. Harford	1.1%	17. Howard	-0.2%
Queen Anne's	127	119	-6.3%	18. Cecil	1.0%	18. St. Mary's	-1.4%
St. Mary's	139	137	-1.4%	19. Calvert	0.9%	19. Worcester	-2.1%
Somerset	81	81	0.0%	20. St. Mary's	0.8%	20. Harford	-4.9%
Talbot	162	193	19.1%	21. Charles	0.8%	21. Queen Anne's	-6.3%
Washington	389	406	4.4%	22. Carroll	0.6%	22. Dorchester	-15.2%
Wicomico	359	402	12.0%	23. Allegany	0.2%	23. Calvert	-17.3%
Worcester	141	138	-2.1%	24. Garrett	0.1%	24. Allegany	-40.0%
Total	44,062	47,901	8.7%	Statewide	5.8%	Statewide	8.7%

LEP = Limited English Proficient

Racial Composition in Maryland Public Schools September 2009

County	White	African American	Hispanic/Latino	Asian	Native American	<u>Percent Minority</u>
Allegany	91.4%	5.9%	1.2%	0.9%	0.6%	1. Prince George's 95.3%
Anne Arundel	65.3%	23.0%	7.0%	4.2%	0.5%	2. Baltimore City 92.1%
Baltimore City	7.8%	87.8%	3.1%	0.9%	0.3%	3. Charles 62.5%
Baltimore	47.9%	40.6%	4.7%	6.2%	0.6%	4. Montgomery 61.8%
Calvert	77.7%	17.0%	2.6%	2.1%	0.6%	5. Baltimore 52.1%
Caroline	72.7%	19.1%	6.9%	0.9%	0.4%	6. Somerset 51.3%
Carroll	90.8%	4.3%	2.6%	2.1%	0.3%	7. Wicomico 46.2%
Cecil	83.6%	11.0%	3.7%	1.3%	0.4%	8. Dorchester 45.6%
Charles	37.4%	54.5%	3.6%	3.5%	0.9%	9. Howard 44.5%
Dorchester	54.3%	39.6%	4.5%	1.1%	0.4%	10. Anne Arundel 34.7%
Frederick	73.3%	12.6%	8.7%	5.0%	0.4%	11. St. Mary's 31.0%
Garrett	98.6%	0.6%	0.3%	0.4%	0.1%	12. Kent 30.4%
Harford	71.8%	20.5%	3.9%	3.3%	0.6%	13. Talbot 29.6%
Howard	55.5%	22.1%	5.8%	16.3%	0.3%	14. Worcester 29.0%
Kent	69.7%	23.7%	5.8%	0.5%	0.4%	15. Harford 28.3%
Montgomery	38.1%	23.2%	22.7%	15.6%	0.3%	16. Caroline 27.3%
Prince George's	4.6%	72.2%	19.6%	3.1%	0.4%	17. Frederick 26.7%
Queen Anne's	86.8%	8.0%	3.0%	1.7%	0.5%	18. Calvert 22.3%
St. Mary's	69.1%	20.4%	6.9%	3.1%	0.6%	19. Washington 21.2%
Somerset	48.7%	44.3%	5.8%	1.0%	0.2%	20. Cecil 16.4%
Talbot	70.4%	19.9%	7.4%	1.9%	0.4%	21. Queen Anne's 13.2%
Washington	78.9%	14.5%	4.2%	2.1%	0.4%	22. Carroll 9.3%
Wicomico	53.8%	37.3%	5.2%	3.4%	0.3%	23. Allegany 8.6%
Worcester	71.0%	22.8%	3.8%	1.9%	0.5%	24. Garrett 1.4%
Maryland	45.5%	37.9%	10.0%	6.1%	0.4%	Statewide 54.4%

Note: Native American includes American Indian and Alaskan Native.

Source: Maryland State Department of Education

Local Government Expenditures in Maryland Fiscal 2009

	Total Local Expenditures	Percent of Total	County Expenditures	Municipal Expenditures	Percent County	Percent Municipal
General Government	\$1,809,231,670	6.5%	\$1,635,176,806	\$174,054,864	90.4%	9.6%
Public Safety						
Police	1,571,476,460	5.6%	1,364,325,515	207,150,945	86.8%	13.2%
Fire	907,864,339	3.3%	857,825,115	50,039,224	94.5%	5.5%
Corrections	367,505,209	1.3%	367,505,209	0	100.0%	0.0%
Other Public Safety	344,472,722	1.2%	313,249,790	31,222,932	90.9%	9.1%
Public Works						
Transportation	1,334,123,131	4.8%	1,151,867,029	182,256,102	86.3%	13.7%
Water/Sewer Services	2,010,927,241	7.2%	1,734,733,953	276,193,288	86.3%	13.7%
Other Public Works	104,420,655	0.4%	7,447,360	96,973,295	7.1%	92.9%
Education						
Public Schools	12,827,714,897	46.0%	12,827,714,897	0	100.0%	0.0%
Community Colleges	1,242,437,884	4.5%	1,242,437,884	0	100.0%	0.0%
Libraries	291,060,722	1.0%	291,060,722	0	100.0%	0.0%
Health/Social Services	1,006,828,155	3.6%	1,006,828,155	0	100.0%	0.0%
Parks and Recreation	796,826,931	2.9%	665,115,925	131,711,006	83.5%	16.5%
Community/Economic Development	790,674,610	2.8%	743,055,026	47,619,584	94.0%	6.0%
Miscellaneous	1,024,138,489	3.7%	982,164,616	41,973,873	95.9%	4.1%
Debt Service	1,478,863,225	5.3%	1,400,091,354	78,771,871	94.7%	5.3%
Total	\$27,908,566,340	100.0%	\$26,590,599,356	\$1,317,966,984	95.3%	4.7%

Local Government Expenditures by County
Fiscal 2009
(\$ in Millions)

County	County	Municipal	Total	Percent County	Percent Municipal
Allegany	\$260.4	\$56.8	\$317.1	82.1%	17.9%
Anne Arundel	2,121.8	96.7	2,218.5	95.6%	4.4%
Baltimore City	3,479.6	0.0	3,479.6	100.0%	0.0%
Baltimore	2,940.3	0.0	2,940.3	100.0%	0.0%
Calvert	408.9	12.2	421.2	97.1%	2.9%
Caroline	118.1	15.0	133.1	88.8%	11.2%
Carroll	691.3	52.1	743.4	93.0%	7.0%
Cecil	354.3	32.5	386.7	91.6%	8.4%
Charles	684.2	14.2	698.5	98.0%	2.0%
Dorchester	144.7	26.1	170.8	84.7%	15.3%
Frederick	1,007.4	170.1	1,177.5	85.6%	14.4%
Garrett	150.0	8.9	158.9	94.4%	5.6%
Harford	1,168.0	52.3	1,220.3	95.7%	4.3%
Howard	1,516.3	0.0	1,516.3	100.0%	0.0%
Kent	80.6	9.8	90.4	89.2%	10.8%
Montgomery	5,633.9	187.0	5,820.9	96.8%	3.2%
Prince George's	3,842.7	165.2	4,007.9	95.9%	4.1%
Queen Anne's	202.0	8.3	210.4	96.0%	4.0%
St. Mary's	393.5	3.4	396.9	99.1%	0.9%
Somerset	90.5	7.8	98.3	92.1%	7.9%
Talbot	130.6	84.0	214.5	60.9%	39.1%
Washington	489.4	117.4	606.8	80.7%	19.3%
Wicomico	376.9	62.7	439.7	85.7%	14.3%
Worcester	304.9	135.5	440.5	69.2%	30.8%
Statewide	\$26,590.6	\$1,318.0	\$27,908.6	95.3%	4.7%