

R14D00
St. Mary's College of Maryland

Operating Budget Data

(\$ in Thousands)

	<u>FY 09</u> <u>Actual</u>	<u>FY 10</u> <u>Working</u>	<u>FY 11</u> <u>Allowance</u>	<u>FY 10-11</u> <u>Change</u>	<u>% Change</u> <u>Prior Year</u>
General Funds	\$16,925	\$17,215	\$17,518	\$303	1.8%
Adjusted General Fund	\$16,925	\$17,215	\$17,518	\$303	1.8%
Other Unrestricted Funds	41,666	46,904	48,984	2,080	4.4%
Contingent & Back of Bill Reductions	0	0	-204	-204	
Adjusted Other Unrestricted Fund	\$41,666	\$46,904	\$48,780	\$1,876	4.0%
Total Unrestricted Funds	58,591	64,119	66,502	2,383	3.7%
Contingent & Back of Bill Reductions	0	0	-204	-204	
Adjusted Total Unrestricted Funds	\$58,591	\$64,119	\$66,298	\$2,179	3.4%
Restricted Funds	2,086	3,600	3,600	0	
Adjusted Restricted Fund	\$2,086	\$3,600	\$3,600	\$0	0.0%
Adjusted Grand Total	\$60,677	\$67,719	\$69,897	\$2,179	3.2%

Note: For purposes of illustration, the Department of Legislative Services has estimated the distribution of selected across-the-board reductions. The reduction is to be transferred from fund balance. The actual allocations are to be developed by the Administration.

- General funds increase \$302,980, or 1.8%, in the fiscal 2011 allowance.
- Other unrestricted funds increase \$1.9 million, or 4.0%, after accounting for across-the-board reductions related to furlough savings.
- Overall, the budget for St. Mary's College of Maryland (SMCM) increases \$2.2 million, or 3.2%, after accounting for across-the-board reductions.

Note: Numbers may not sum to total due to rounding.

For further information contact: Richard H. Harris

Phone: (410) 946-5530

Personnel Data

	<u>FY 09 Actual</u>	<u>FY 10 Working</u>	<u>FY 11 Allowance</u>	<u>FY 10-11 Change</u>
Regular Positions	426.50	419.50	419.50	0.00
Contractual FTEs	<u>27.33</u>	<u>29.33</u>	<u>33.57</u>	<u>4.24</u>
Total Personnel	453.83	448.83	453.07	4.24

Vacancy Data: Regular Positions

Turnover and Necessary Vacancies, Excluding New Positions	2.52	0.60%
Positions and Percentage Vacant as of 12/31/09	34.70	8.27%

- Regular positions are unchanged in the allowance; however, there are 4.24 additional contractual positions. Changes are mainly due to an increase in part-time faculty and staff positions added after regular positions were deleted in fiscal 2009 and 2010 budget reductions.

Analysis in Brief

Major Trends

Minority Graduation Rates: The six-year graduation rate at SMCM is one of the highest in the State and increased significantly for minority and African American students in fiscal 2009. The college does not expect to maintain these rates through fiscal 2011, however. **The President should comment on efforts to increase graduation rates among minority students.**

Issues

Making College Affordable: SMCM is the most expensive public college in Maryland but makes institutional aid awards that meet a greater percentage of need than for students on average. The amount of awards made on a need basis by SMCM increase 22.9% in fiscal 2010 to compensate for investment losses for SMCM's foundation, which normally funds these awards. A significant number of awards are made to students with a missing expected family contribution figure, although these numbers include all types of aid awards, not just need-based. **The President should comment on awards made from the SMCM foundation. The President should also comment on how SMCM awards institutional aid to students.**

Staying Competitive: As the most expensive four-year institution in Maryland, cost is a major factor for students who are accepted for admission but choose to enroll elsewhere. Four University System of Maryland institutions are SMCM's biggest competitors in terms of applications but are at least \$4,400 less expensive. The college is more affordable compared with out-of-state competitors, but SMCM has a less prominent name. **The President should comment on SMCM's efforts to stay competitive with other colleges and universities.**

Recommended Actions

1. Concur with Governor's allowance.

R14D00 – St. Mary's College of Maryland

R14D00
St. Mary's College of Maryland

Operating Budget Analysis

Program Description

St. Mary's College of Maryland (SMCM) is Maryland's public, co-educational, liberal arts honors college. The college offers an array of baccalaureate degrees in the arts and sciences and provides a Master of Arts of Teaching. As an honors college, SMCM strives to offer students an educational experience that goes beyond traditional course-based study to foster independent learning and a link between curricular and extra-curricular activities and interests. SMCM includes civic responsibility as a corner stone of its academic and extra-curricular programs. The capstone SMCM experience is the St. Mary's Project.

The college aspires to maintain or strengthen the quality of instruction offerings; to increase the effectiveness of academic support resources; to improve the efficiency of and service provided by administrative units; and to maintain or improve the physical plant facilities to accommodate these goals.

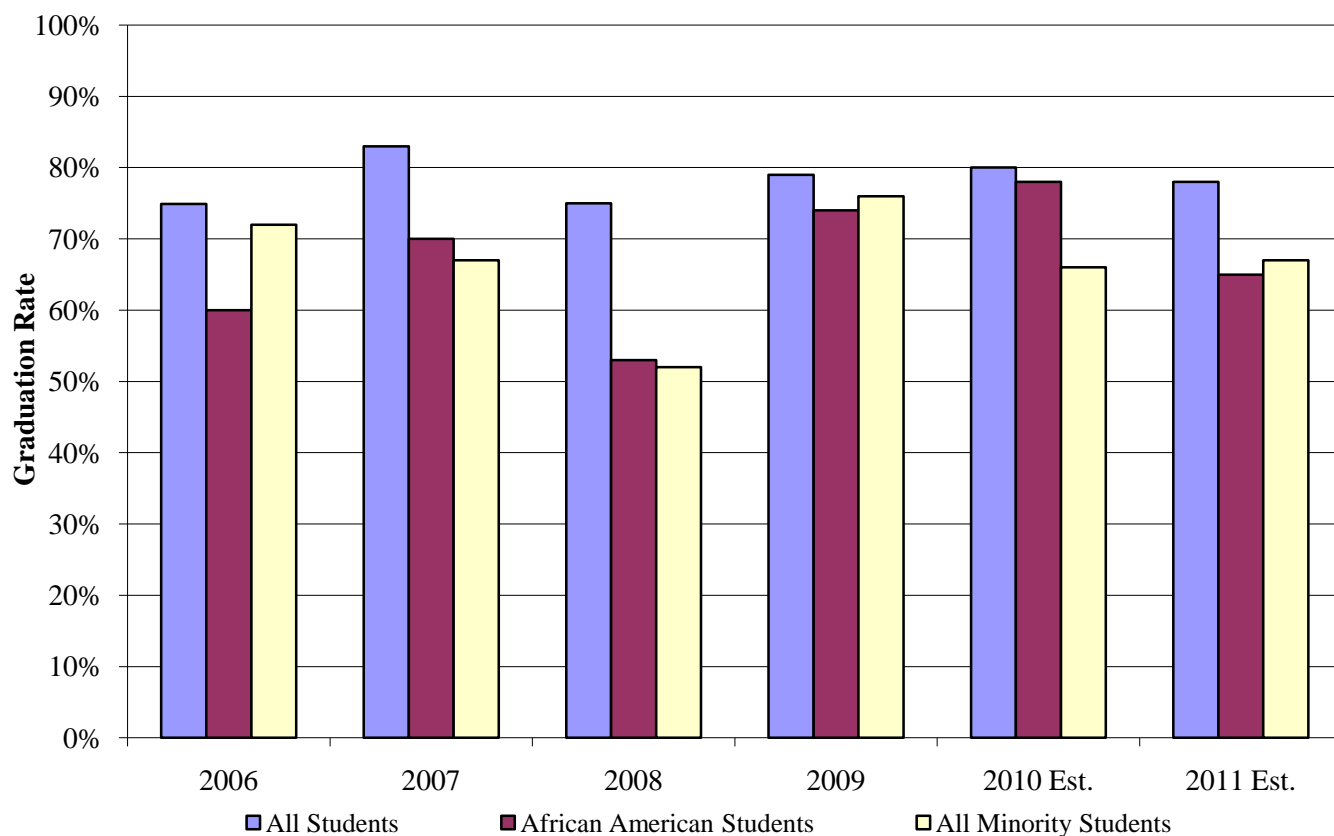
Carnegie Classification: Baccalaureate College

Fall 2009 Undergraduate Enrollment Headcount		Fall 2009 Graduate Enrollment Headcount	
Male	855	Male	8
Female	1,162	Female	35
Total	2,017	Total	43
Fall 2009 New Students Headcount		Campus (Main Campus)	
First-time	488	Acres	361
Transfers/Others	72	Buildings	54
Graduate	43	Average Age	16
Total	603	Oldest	St. Mary's Hall - 1906
Programs		Degrees Awarded (2008-2009)	
Bachelor's	25	Bachelor's	488
Master's	1	Master's	28
		Total Degrees	516

Performance Analysis: Managing for Results

As a small public honors college, it is important that SMCM continue to enroll and educate highly qualified students and a diverse student body. **Exhibit 1** shows graduation rates of all students, minority students, and African American students. While SMCM has the highest four-year graduation rate in the State at 72.2% in fiscal 2009, the standard measure of success is six-year graduation rates. The college also has one of the highest six-year graduation rates in Maryland, and it increased 4 percentage points in fiscal 2009, to 79.0%.

Exhibit 1
Six-year Graduation Rates at St. Mary’s College of Maryland
Fiscal 2006-2011 Estimated

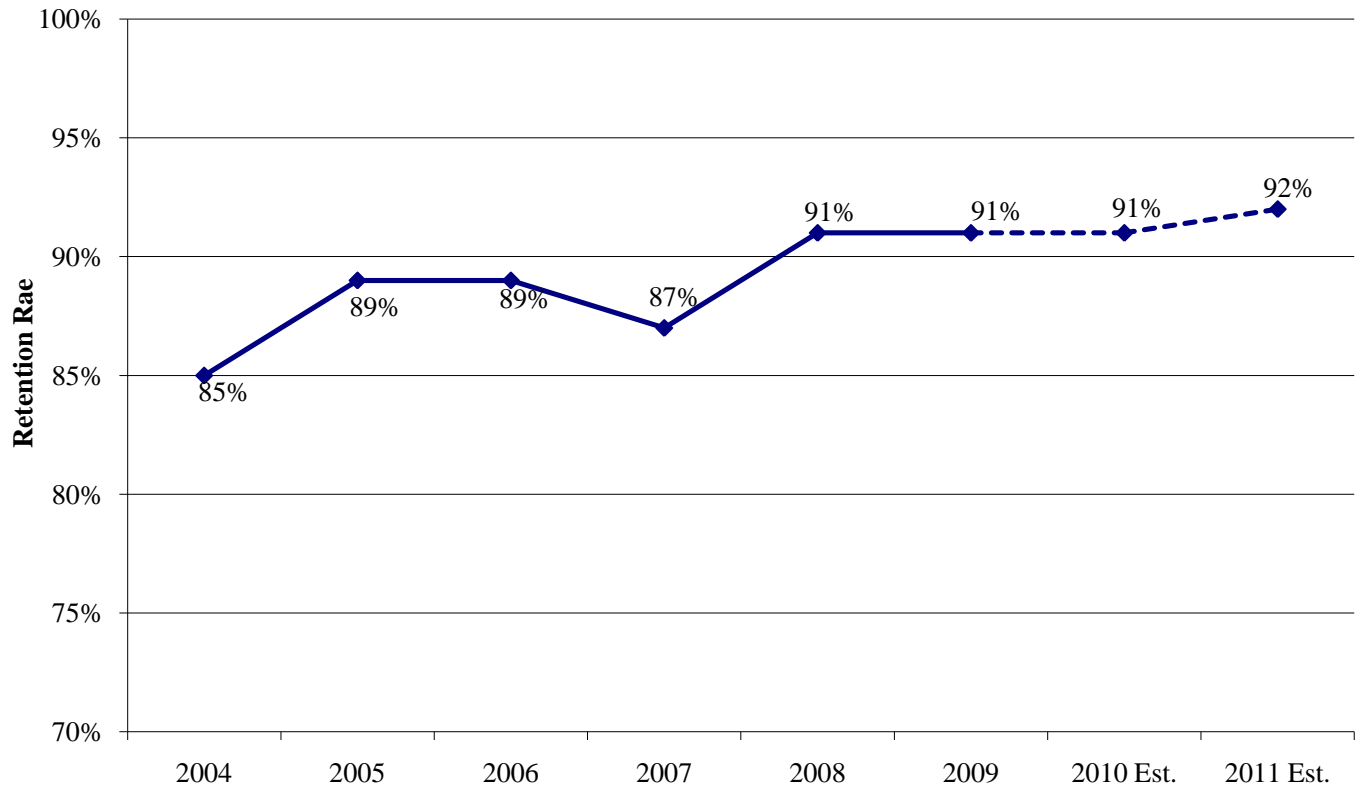


Source: Governor’s Budget Books, Fiscal 2009-2011

The six-year graduation rate also grew significantly in fiscal 2009 for African American and minority students by 21 and 24 percentage points, respectively. Projections indicate these rates will not be maintained through fiscal 2011, however. SMCM explains that although 19% of the student body is minority, the actual number of students is small and each student can have a large effect on graduation rates. **The President should comment on efforts to increase graduation rates among minority students.**

Two-year retention rates for all students are shown in **Exhibit 2**. One of SMCM’s goals is to stabilize this rate at 90%, and in fiscal 2009, the rate was 91%. By 2011, it is expected to grow to 92%, keeping above SMCM’s goal.

Exhibit 2
Two-year Retention Rates
Fiscal 2004-2011 Estimated



Source: Governor’s Budget Books, Fiscal 2006-2011

Part of SMCM’s mission is to attract highly qualified students to the college, as every student is considered an honors student. One measure of this is the enrolling students’ Scholastic Aptitude Test (SAT) scores. The college’s goal is for the average SAT score to exceed 1,240. **Exhibit 3** shows the average SAT score of first-year students from fiscal 2006-2011. A year ago, SMCM was projecting the fiscal 2009 rate to be 1,220. Managing for Results data showed the fiscal 2009 actual was 10 points higher, 1,230. SMCM is again projecting the next year’s average, fiscal 2010, to be 1,220.

Exhibit 3
Scholastic Aptitude Test Scores of First-year Students
Fiscal 2006-2011 Estimated

<u>2006</u>	<u>2007</u>	<u>2008</u>	<u>2009</u>	<u>2010 Est.</u>	<u>2011 Est.</u>
1,227	1,226	1,221	1,230	1,220	1,225

Source: Governor’s Budget Books, Fiscal 2006-2011

Impact of Cost Containment

The Board of Public Works (BPW) reduced SMCM’s budget and fund balance during fiscal 2010. The operating budget reduction was \$150,000 in unrestricted funds and was taken from the college’s facility renewal budget. This amount represents 7.9% of the fiscal 2010 facility renewal budget and affected electrical power upgrades and other capital investments. From the college’s fund balance, a reduction of \$204,368, or 4.1%, will be transferred to the general fund at the end of the fiscal year to pay for the college’s fiscal 2010 furlough. It should be noted that separate legislation must be adopted to implement the planned fund balance transfers. This language is included in Senate Bill 141 – Budget Reconciliation and Financing Act (BRFA) of 2010.

Proposed Budget

The Governor’s allowance for SMCM grows 3.2%, or \$2.2 million, after accounting for across-the-board reductions. As shown in **Exhibit 4**, growth is driven mainly by other unrestricted funds, which increase \$1.9 million, or 4.0%. General funds increase 1.8%, or \$0.3 million. Restricted funds are level funded in the allowance.

Exhibit 4
Governor’s Proposed Budget
St. Mary’s College of Maryland
(\$ in Thousands)

	<u>2009</u> <u>Actual</u>	<u>2010</u> <u>Working</u>	<u>2011</u> <u>Adjusted</u>	<u>2010-2011</u> <u>Change</u>	<u>% Change</u> <u>Prior Year</u>
General Funds	\$16,925	\$17,215	\$17,518	\$303	1.8%
Other Unrestricted Funds	41,666	46,904	48,780	1,876	4.0%
Total Unrestricted Funds	58,591	64,119	66,298	2,179	3.4%
Restricted Funds	2,086	3,600	3,600	0	0.0%
Total Funds	\$60,677	\$67,719	\$69,897	\$2,179	3.2%

Note: Numbers may not sum to total due to rounding.

Exhibit 5 shows unrestricted fund changes by budget program and revenue source. Although several categories change by large percentages, there are few significant dollar changes from the working appropriation. The biggest changes are in Instruction, growing \$727,610, mainly in salaries, and in Institutional Support, growing \$668,248 due to increased spending on fringe benefits. The only major decrease is in Academic Support, decreasing \$155,538. The fiscal 2010 employee furlough savings for all budget programs has been shifted into Academic Support, which will be transferred to fund balance at the end of the year, and then transferred to the general fund. As furlough savings are unallocated in the 2011 budget, their absence causes overall spending in this budget program to decline. Apart from these funds, the underlying growth in Academic Support is \$48,830, or 2%.

Exhibit 5
Budget Changes for Current Unrestricted Funds by Program
Fiscal 2009-2011
(\$ in Thousands)

	<u>2009</u> <u>Actual</u>	<u>2010</u> <u>Working</u>	<u>2009-10</u> <u>% Change</u>	<u>2011</u> <u>Allowance</u>	<u>2010-11</u> <u>\$ Change</u>	<u>2010-11</u> <u>% Change</u>
Expenditures						
Instruction	\$18,680	\$19,450	4.1%	\$20,178	\$728	3.7%
Public Service	145	182	25.3%	180	-2	-1.0%
Academic Support	2,446	2,599	6.3%	2,444	-156	-6.0%
Student Services	5,132	5,061	-1.4%	5,203	142	2.8%
Institutional Support	9,795	10,594	8.2%	11,262	668	6.3%
Operation and Maintenance of Plant	4,746	4,884	2.9%	5,343	459	9.4%
Scholarships and Fellowships	5,448	6,172	13.3%	6,360	188	3.0%
Subtotal Education and General	\$46,393	\$48,943	5.5%	\$50,970	\$2,027	4.1%
Auxiliary Enterprises	\$12,198	\$15,176	24.4%	\$15,532	\$356	2.3%
Pending Reductions				-204	-204	
Total	\$58,591	\$64,119	9.4%	\$66,298	\$2,179	3.4%
Revenues						
Tuition and Fees	\$27,149	\$28,197	3.9%	\$30,249	\$2,052	7.3%
General Funds	16,925	17,215	1.7%	17,518	303	1.8%
Other	-2,853	866	-130.3%	409	-456	-52.7%
Subtotal	\$41,221	\$46,278	12.3%	\$48,176	\$1,899	4.1%
Auxiliary Enterprises	17,586	17,841	1.5%	18,121	280	1.6%
Transfers (to) from fund balance	-216	0	-100.0%	0	0	
Total	\$58,591	\$64,119	9.4%	\$66,298	\$2,179	3.4%

Note: Fiscal 2011 revenues are reduced by \$204,368 in other unrestricted funds to reflect across-the-board reductions, which are to be transferred from fund balance.

Source: Governor’s Budget Books, Fiscal 2011

Impact of Cost Containment

The fiscal 2011 budget plan includes a number of across the board reductions. For SMCM, the fiscal 2011 employee furlough amount is \$204,368, which will be transferred from fund balance via the BRFA. After this transfer, the college will have \$4.7 million remaining in its fund balance.

General Fund Allowance

The minimum general fund increase for SMCM is specified in the Education Article, § 14-405 (b) (ii), which states that the prior appropriation be increased by funds required to offset inflation. This involves multiplying the prior year appropriation by the implicit price deflator for State and local governments. As **Exhibit 6** shows, for fiscal 2011 the estimated price deflator is 1.76%. This results in a mandated increase of \$302,980 over the fiscal 2010 working appropriation. The exhibit also demonstrates that during periods of fiscal constraint, the grant to SMCM is reduced below the amount required by statute. When the State’s fiscal outlook is more favorable, SMCM often receives more than the formula requires. The allowance aligns exactly with the formula percentage in fiscal 2011.

Exhibit 6 General Fund Appropriation Fiscal 2003-2011

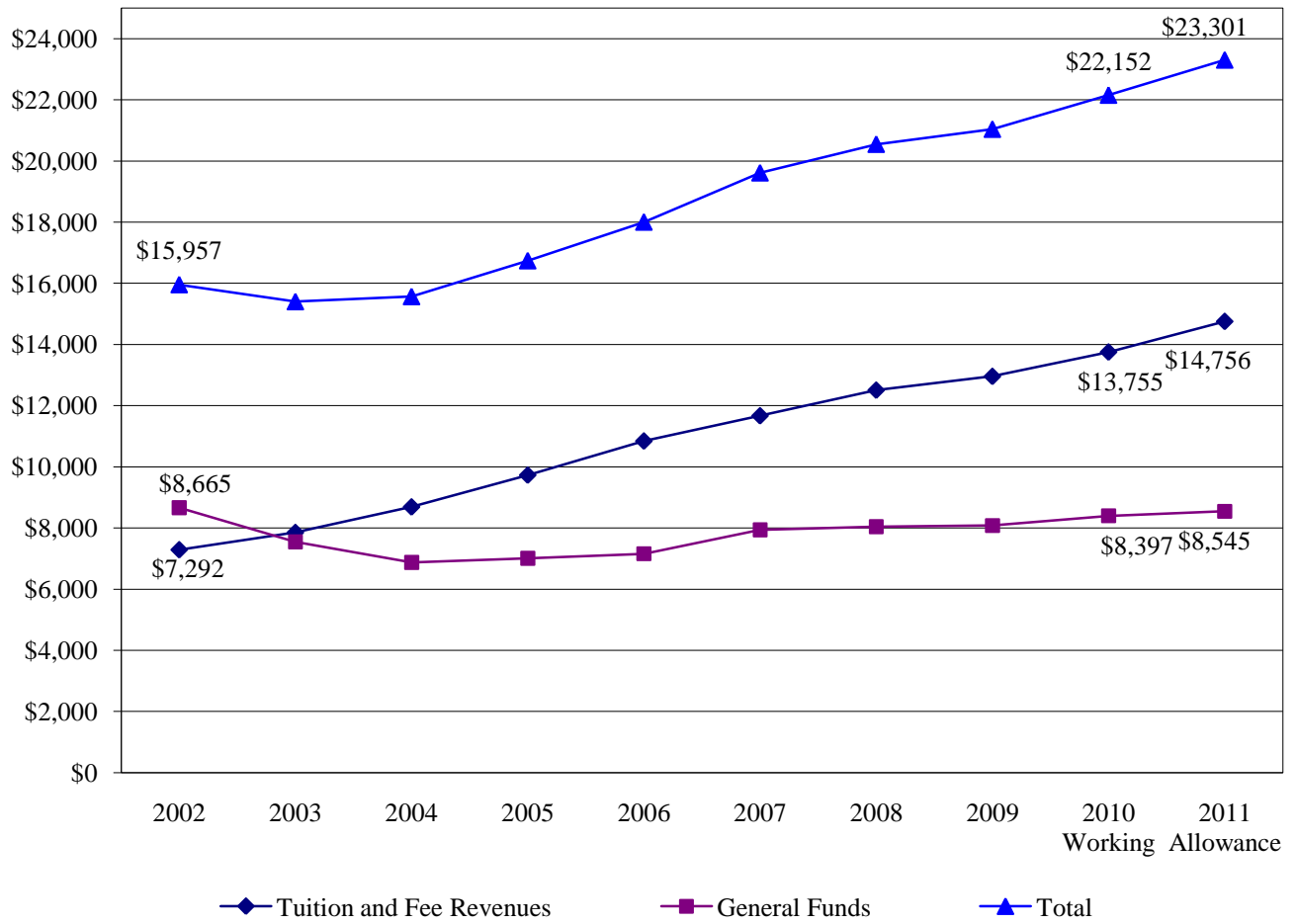
	<u>2003</u>	<u>2005</u>	<u>2007</u>	<u>2009</u>	<u>Working 2010</u>	<u>Allowance 2011</u>
Price Deflator	2.60%	2.20%	3.00%	2.66%	1.89%	1.76%
Formula	\$15,106,161	\$13,983,894	\$15,030,697	\$17,123,000	\$17,372,261	\$17,517,752
Appropriation	13,853,271	13,977,883	15,906,000	16,925,316	17,214,772	17,517,752
Difference	-\$1,252,890	-\$6,011	\$875,303	-\$197,684	-\$157,489	\$0
Appropriation % Change	-5.90%	2.20%	9.00%	3.41%	1.71%	1.76%

Source: Department of Legislative Services, Department of Budget and Management

Revenues Per Student

Exhibit 7 shows general funds and tuition and fee revenues per full-time equivalent student (FTES). Overall, spending increases 5.2% per FTES, or \$1,149. This increase is driven mainly by tuition and fee revenues, which increase \$1,001 per FTES, or 7.3%. General funds increase \$148 per FTES, or 1.8%.

**Exhibit 7
Tuition and Fee Revenues and General Funds
Per Full-time Equivalent Student
Fiscal 2002-2011**



Source: Governor’s Budget Books, Fiscal 2011

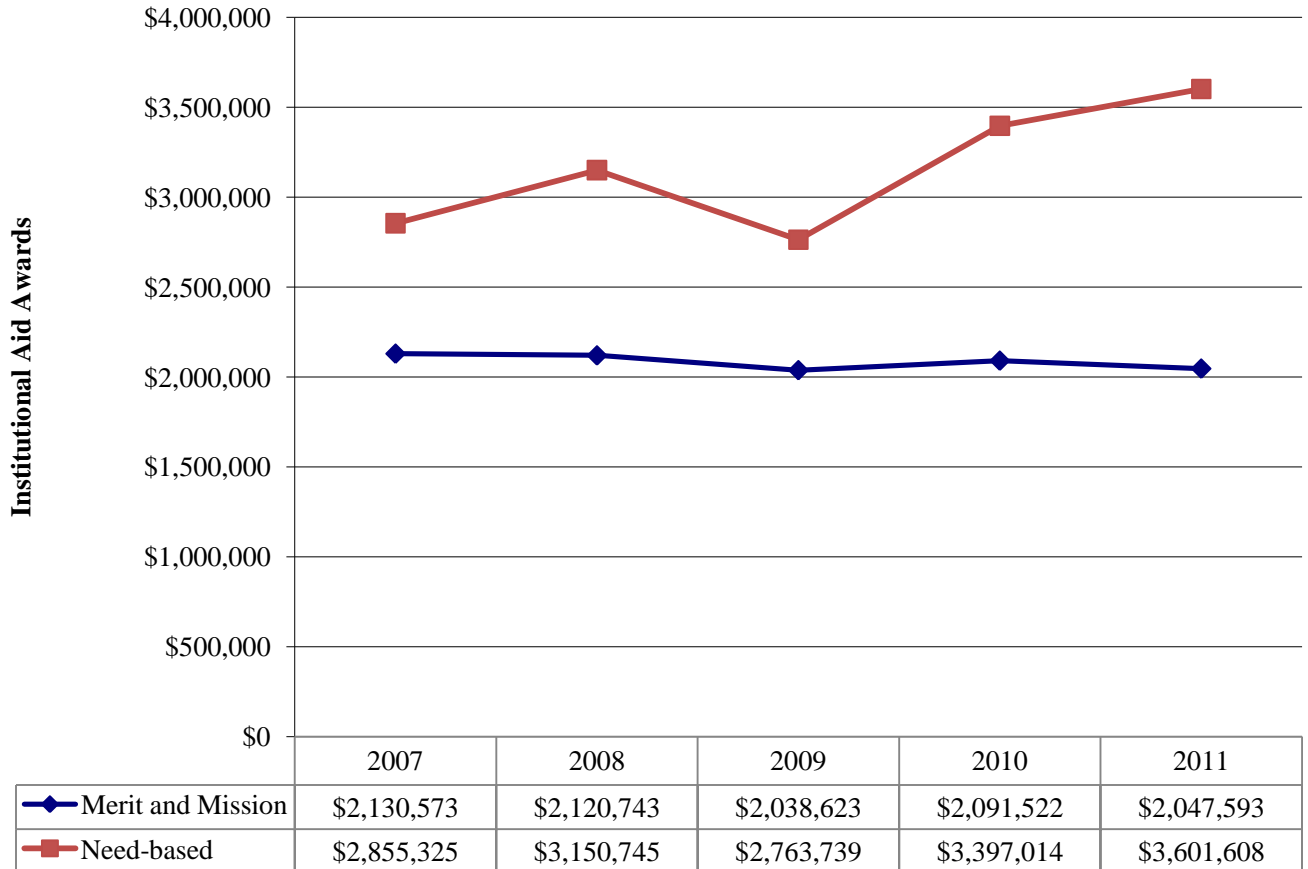
Issues

1. Making College Affordable

SMCM is the only public four-year institution that has not benefitted from a State-funded tuition freeze for the past four years. Fall 2010 in-state tuition and fee rates are the State's most expensive at \$13,630. Like all colleges, however, SMCM uses financial aid to help students achieve their educational goals. The lack of financial support is a major factor contributing to students leaving college before earning a degree. Along with federal and State financial aid, colleges provide financial assistance to students in categories that include merit, mission, and need.

Exhibit 8 shows the amount of institutional aid awarded by the college on a need basis and for merit and mission. There was a 12.3% decline in need-based aid between fiscal 2008 and 2009. The college reports this is due to a higher than expected acceptance of awards in fiscal 2008, causing the aid budget to be over spent in that year. Fiscal 2009 was within the budget. Need-based aid has increased 22.9% in fiscal 2010, however, and is budgeted to grow another 6.0% in the allowance. This is due to the college covering financial aid awards that would normally have been paid for by the college's foundation. Interest income from the foundation's investments declined due to the recession, and SMCM is funding financial aid awards that would normally be paid by that revenue. Merit and mission aid increases in the working appropriation but is budgeted to decline 2.1% in the allowance, as more funds are directed to need-based awards. **The President should comment on awards made from the SMCM foundation.**

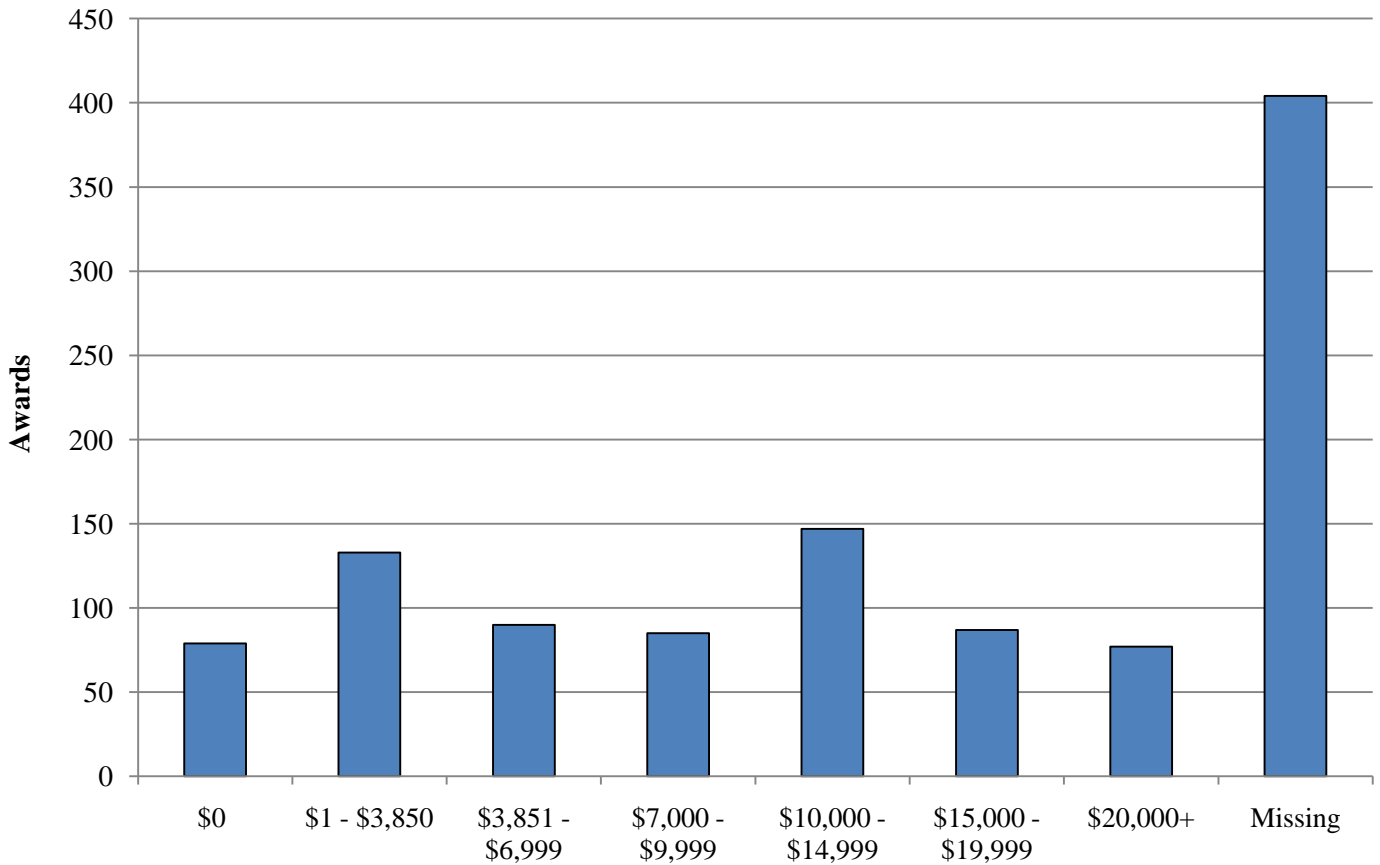
**Exhibit 8
St. Mary’s College of Maryland Institutional Aid Awards
Fiscal 2007-2011**



Source: St. Mary’s College of Maryland

For the most part, students enrolling in college complete a Free Application for Federal Student Aid (FAFSA) to determine eligibility for federal financial aid and student loan programs. The application determines the expected family contribution (EFC) of each student, and aid is often based on EFC category. **Exhibit 9** shows the number of institutional aid awards accepted by SMCM students in fiscal 2008, and **Exhibit 10** shows the amount of need met by those awards and the average for Maryland overall. A significant number of awards are made to students who did not file a FAFSA, which usually means they did not have financial need. Although these data include all institutional aid award types, a significant number were from the need-based category. A year ago, SMCM reported that awards identified as need-based would be more appropriately in the merit and mission category. **The President should comment on how SMCM awards institutional aid to students.**

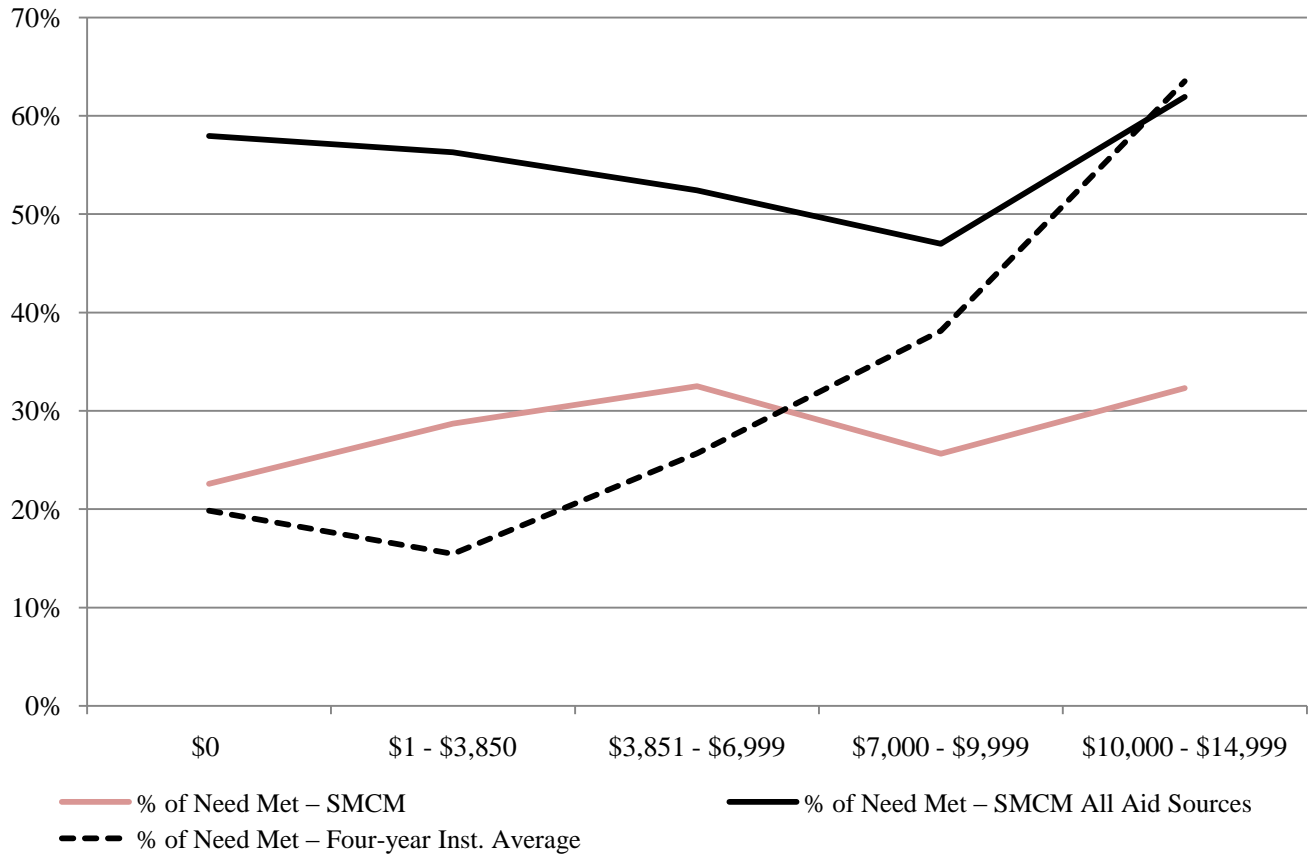
Exhibit 9
Undergraduate Institutional Financial Aid Awards by EFC
Fiscal 2008



EFC: expected family contribution

Source: Maryland Higher Education Commission

Exhibit 10
Undergraduate Institutional Financial Aid – Need Met by EFC
Fiscal 2008



EFC: expected family contribution
 SMCM: St. Mary’s College of Maryland

Source: Maryland Higher Education Commission

The average amount of need met for SMCM students with the most need is higher than the average for students in Maryland. For students with an EFC between \$1 and \$9,999, at least 25% of need is met. When all sources of aid are considered, that increases to at least 45%. Students with the highest EFC also have high amounts of need met due to their having less need overall and a relatively small award can meet a sizable portion of the gap.

2. Staying Competitive

SMCM is the most expensive public college in Maryland, which itself has high tuition and fee rates nationally. Although the State’s tuition freeze has moderated the cost for State residents over the past four years, SMCM has not received additional State funds to freeze tuition. As the University System of Maryland (USM) institutions and Morgan State University held tuition at fall 2005 levels, with only fees increasing, SMCM has increased tuition and fees at an average rate of 5% each year, to \$13,234 in fall 2009. Only in fiscal 2011 do all State institutions propose to increase tuition at the same rate, 3.0%.

As SMCM became more expensive compared to its Maryland peers, the college began to receive feedback from applicants that cost was a major factor in their decision not to attend. Although this is strictly anecdotal evidence, it demonstrates the unique position the college finds itself in as the most expensive State institution, but whose cost remains significantly less than private colleges. **Exhibit 11** shows SMCM is nearly \$4,400 more expensive than the University of Maryland Baltimore County, the second most expensive public college in the State.

Exhibit 11
SMCM Cross Application Rates and Tuition Costs
Fall 2007-2009

	<u>SMCM</u>	<u>UMCP</u>	<u>UMBC</u>	<u>Towson</u>	<u>Salisbury</u>	<u>Washington College</u>	<u>Loyola</u>	<u>William and Mary</u>	<u>James Madison</u>
Cross Applications	16,032	2,647	1,542	1,491	1,352	1,046	700	681	534
Tuition and Fees for Maryland Residents									
Fall 2009	\$13,234	\$8,075	\$8,872	\$7,418	\$6,618	\$35,350	\$37,610	\$30,592	\$19,376
Fall 2008	12,604	8,005	8,780	7,314	6,492	34,005	36,240	29,116	18,458
Fall 2007	11,989	7,969	8,708	7,234	6,412	32,160	32,370	25,048	17,386
% Increase	10.4%	1.3%	1.9%	2.5%	3.2%	9.9%	16.2%	22.1%	11.4%

SMCM: St. Mary’s College of Maryland
 UMCP: University of Maryland, College Park
 UMBC: University of Maryland Baltimore County

Source: St. Mary’s College of Maryland

Exhibit 11 also shows SMCM’s competitor institutions in terms of where students are applying for admission, and their tuition and fee rates between fall 2007 and 2009. SMCM received 16,032 applications in fall 2009. Of those students, 2,647 also applied to University of Maryland, College Park, SMCM’s biggest competitor. In fact, SMCM’s top four competitor colleges are USM institutions. The next two are private colleges inside Maryland. The College of William and Mary

RI4D00 – St. Mary's College of Maryland

and James Madison University, both in Virginia, are the top non-Maryland liberal arts and large university competitors, respectively.

Among Maryland's public institutions, SMCM is the most expensive, and it also had the greatest increase in costs, 10.4%. The next closest is Salisbury University (SU), 3.2%, where tuition was frozen for four years and only fees were increasing. Of the private and out-of-state intuitions, SMCM is the least expensive by \$6,100, with rates increasing at a slower rate except for Washington College, whose rates increased by 9.9%.

The advantage of SMCM for Maryland residents over the local competitor colleges is that it offers the feel of a small, liberal arts college at a price well below similar private or out-of-state public institutions. For residents who want that kind of experience, but for whom cost is a factor, SMCM may be too expensive when universities like the University of Maryland, College Park is \$5,200 less. For the out-of-state competitors, SMCM has a clear advantage on price but does not have as prominent a name. **The President should comment on SMCM's efforts to stay competitive with other colleges and universities.**

Recommended Actions

1. Concur with Governor's allowance.

Current and Prior Year Budgets

Current and Prior Year Budgets

St. Mary's College of Maryland

(\$ in Thousands)

Fiscal 2009	General Fund	Special Fund	Federal Fund	Other Unrestricted Fund	Total Unrestricted Fund	Restricted Fund	Total
Legislative Appropriation	\$17,079	\$0	\$0	\$43,985	\$61,064	\$3,599	\$64,663
Deficiency Appropriation	0	0	0	0	0	0	0
Budget Amendments	0	0	0	0	0	0	0
Cost Containment	-154	0	0	0	-154	0	-154
Reversions and Cancellations	0	0	0	-2,319	-2,319	-1,513	-3,832
Actual	\$16,925	\$0	\$0	\$41,666	\$58,591	\$2,086	\$60,677
Fiscal 2010							
Legislative Appropriation	\$17,365	\$0	\$0	\$46,904	\$64,269	\$3,600	\$67,869
Cost Containment	-150	0	0	0	-150	0	-150
Budget Amendments	0	0	0	0	0	0	0
Working Appropriation	\$17,215	\$0	\$0	\$46,904	\$64,119	\$3,600	\$67,719

Note: Numbers may not sum to total due to rounding.

Fiscal 2009

The unrestricted fund appropriation to SMCM was \$60,910,259, which includes \$17,079,176 from the general fund. There were two mid-year reductions to this amount, however. The first, \$29,160, represented the college’s Other Post Employment Benefits contribution. The other general fund reduction was \$124,700 due to a mid-year BPW action. The college met this reduction by furloughing employees and increasing turnover.

At the end of the fiscal year, SMCM cancelled \$2,319,227 in unrestricted funds. The largest was a transfer to the college’s plant fund of \$1,054,411. Next, money laid over into the fiscal 2010 budget totaled \$423,828. Finally, there was a cancellation of \$840,988, representing the difference between the budget approved by SMCM’s Board of Trustees and that approved by the State.

There was a restricted fund cancellation of \$1,513,262 from multi-year grants and scholarship spending. Unspent grant funds are cancelled and re-appropriated in the following fiscal year. In fiscal 2009, this amount was \$1,189,025. The remaining amount, \$324,238, was from lower than expected scholarship support from SMCM’s foundation due to poor market performance of investments.

Fiscal 2010

The legislative appropriation was \$46,904,064 in unrestricted funds, including \$17,364,772 in general funds. The only change was a BPW reduction in the amount of \$150,000. This represents 7.9% of the college’s budgeted facility renewal spending.

**Object/Fund Difference Report
St. Mary's College of Maryland**

<u>Object/Fund</u>	<u>FY09 Actual</u>	<u>FY10 Working Appropriation</u>	<u>FY11 Allowance</u>	<u>FY10 - FY11 Amount Change</u>	<u>Percent Change</u>
Positions					
01 Regular	426.50	419.50	419.50	0	0%
02 Contractual	27.33	29.33	33.57	4.24	14.5%
Total Positions	453.83	448.83	453.07	4.24	0.9%
Objects					
01 Salaries and Wages	\$ 31,051,021	\$ 30,671,942	\$ 31,983,382	\$ 1,311,440	4.3%
02 Technical and Spec. Fees	3,371,279	3,808,367	4,288,765	480,398	12.6%
03 Communication	397,250	391,460	391,460	0	0%
04 Travel	1,988,081	2,625,595	2,715,595	90,000	3.4%
06 Fuel and Utilities	3,854,506	3,855,041	4,231,756	376,715	9.8%
07 Motor Vehicles	221,432	205,518	205,518	0	0%
08 Contractual Services	8,373,866	8,535,493	8,472,135	-63,358	-0.7%
09 Supplies and Materials	2,915,174	3,533,311	3,533,311	0	0%
10 Equipment – Replacement	40,459	40,872	40,872	0	0%
11 Equipment – Additional	1,128,101	1,653,617	1,653,617	0	0%
12 Grants, Subsidies, and Contributions	6,718,901	8,643,948	8,831,923	187,975	2.2%
13 Fixed Charges	594,909	3,675,119	3,675,119	0	0%
14 Land and Structures	21,562	78,389	78,389	0	0%
Total Objects	\$ 60,676,541	\$ 67,718,672	\$ 70,101,842	\$ 2,383,170	3.5%
Funds					
40 Unrestricted Fund	\$ 58,591,032	\$ 64,118,836	\$ 66,502,006	\$ 2,383,170	3.7%
43 Restricted Fund	2,085,509	3,599,836	3,599,836	0	0%
Total Funds	\$ 60,676,541	\$ 67,718,672	\$ 70,101,842	\$ 2,383,170	3.5%

Note: The fiscal 2010 appropriation does not include deficiencies.

**Fiscal Summary
St. Mary's College of Maryland**

<u>Program/Unit</u>	<u>FY09 Actual</u>	<u>FY10 Wrk Approp</u>	<u>FY11 Allowance</u>	<u>Change</u>	<u>FY10 - FY11 % Change</u>
01 Instruction	\$ 18,829,501	\$ 19,709,097	\$ 20,436,222	\$ 727,125	3.7%
02 Research	312,571	539,529	540,014	485	0.1%
03 Public Service	170,828	226,201	224,469	-1,732	-0.8%
04 Academic Support	2,588,657	2,845,156	2,689,618	-155,538	-5.5%
05 Student Services	5,206,250	5,189,038	5,330,541	141,503	2.7%
06 Institutional Support	9,795,032	10,594,239	11,262,487	668,248	6.3%
07 Operation And Maintenance Of Plant	4,814,780	5,001,746	5,460,497	458,751	9.2%
08 Auxiliary Enterprises	12,197,862	15,175,546	15,531,899	356,353	2.3%
17 Scholarships And Fellowships	6,761,060	8,438,120	8,626,095	187,975	2.2%
Total Expenditures	\$ 60,676,541	\$ 67,718,672	\$ 70,101,842	\$ 2,383,170	3.5%
Unrestricted Fund	\$ 58,591,032	\$ 64,118,836	\$ 66,502,006	\$ 2,383,170	3.7%
Restricted Fund	2,085,509	3,599,836	3,599,836	0	0%
Total Appropriations	\$ 60,676,541	\$ 67,718,672	\$ 70,101,842	\$ 2,383,170	3.5%

Note: The fiscal 2010 appropriation does not include deficiencies.

**St. Mary’s College of Maryland
Full-time Equivalent Personnel by Budget Program
Fiscal 2008-2010**

<u>Budget Program</u>	<u>2008 FTEs</u>	<u>% of Total FTEs</u>	<u>2009 FTEs</u>	<u>% of Total FTEs</u>	<u>2010 FTEs</u>	<u>% of Total FTEs</u>	<u>Change in Share of Total 08-10</u>
Instruction	184.00	43.9%	175.00	41.9%	176.00	42.8%	-1.8
Research	1.00	0.2%		0.0%		0.0%	-0.2
Public Service	2.00	0.5%	2.00	0.5%		0.0%	-0.5
Academic Support	15.00	3.6%	21.00	5.0%	17.00	4.1%	0.5
Student Services	49.00	11.7%	56.00	13.4%	54.00	13.1%	1.2
Institutional Support	93.50	22.3%	86.00	20.6%	86.00	20.9%	-1.7
Operations/Plant Maintenance	30.00	7.2%	36.00	8.6%	35.00	8.5%	1.2
Auxiliary Enterprises	45.00	10.7%	42.00	10.0%	43.00	10.5%	-0.4
Total	419.50		418.00		411.00		

Source: St. Mary’s College of Maryland