
**Department of Health and
Mental Hygiene
Fiscal 2006 Budget Overview**

**Department of Legislative Services
Office of Policy Analysis
Annapolis, Maryland**

January 2005

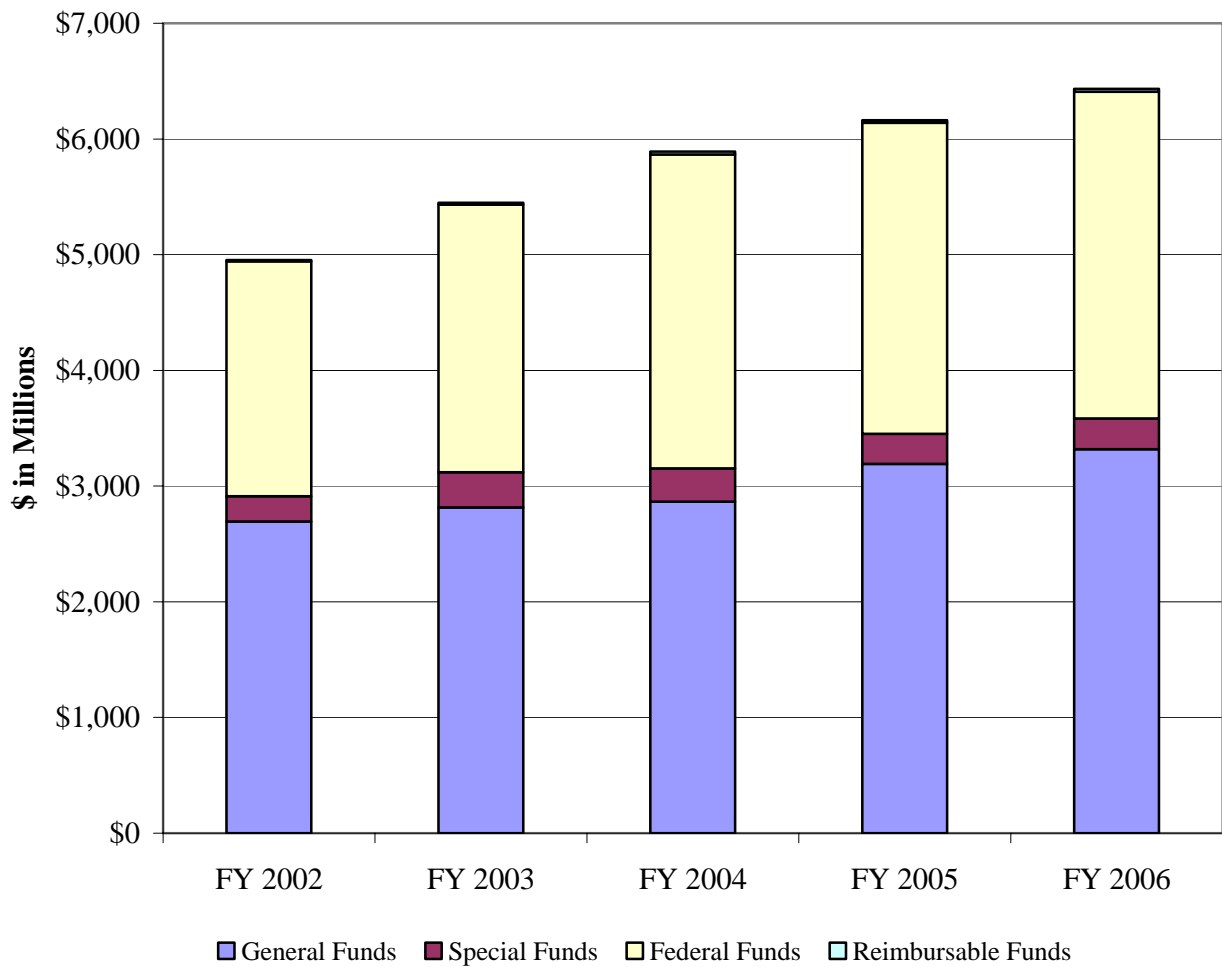
For further information contact: Simon G. Powell

Phone: (410) 946-5530

Analysis of the FY 2006 Maryland Executive Budget, 2005

M00
Department of Health and Mental Hygiene
Fiscal 2006 Budget Overview

Department of Health and Mental Hygiene
Five-year Funding Trends
(\$ in Millions)



M00 – DHMH – Fiscal 2006 Budget Overview

**Department of Health and Mental Hygiene
Budget Overview: Continued but Moderate Growth
Fiscal 2003 – 2006
(\$ in Millions)**

	<u>FY 2003</u>	<u>FY 2004</u>	<u>FY 2005</u>	<u>FY 03-05 Change</u>	<u>FY 2006</u>	<u>FY 05-06 Change</u>
Operations	\$531	\$521	\$549	\$18	\$550	\$1
Contractual Services	4,816	5,271	5,517	\$701	5,793	\$277
Grants	102	99	97	-\$5	90	-\$7
Total	\$5,449	\$5,890	\$6,162	\$713	\$6,433	\$271
General Fund	\$2,814	\$2,865	\$3,134	\$320	\$3,336	\$202
FY 2005 Deficiencies			58			-\$58
Contingent and Back of Bill Reductions					-17	-\$17
Adjusted General Funds	\$2,814	\$2,865	\$3,192	\$378	\$3,319	\$127
Special Funds	\$306	\$289	\$260	-\$46	\$265	\$5
Federal Funds	\$2,313	\$2,713	\$2,631	\$318	\$2,825	\$194
FY 2005 Deficiencies			58			-\$58
Adjusted Federal Funds	\$2,313	\$2,713	\$2,689	\$376	\$2,825	\$136
Reimbursable Funds	\$16	\$24	\$21	\$5	\$25	\$4
Adjusted Grand Total	\$5,449	\$5,890	\$6,162	\$713	\$6,434	\$272
Annual % Change	10.0%	8.1%	4.6%		4.4%	

Note: There are small contingent reductions in funds other than general funds. However, they are too small to be reflected in this chart.

Source: Department of Legislative Services; Department of Budget and Management

M00 – DHMH – Fiscal 2006 Budget Overview

**Department of Health and Mental Hygiene
Fiscal 2005 Deficiencies and Fiscal 2006 Contingent Reductions**

<u>Program</u>	<u>Item</u>	<u>General Fund Impact</u>	<u>Total Fund Impact</u>
Fiscal 2005 Deficiencies			
Medicaid	Funding for calendar 2005 rate increase for Managed Care Organizations	\$23,000,000	\$46,000,000
Medicaid	Prior year deficits	35,000,000	70,000,000
Fiscal 2005 Deficiencies Total		\$58,000,000	\$116,000,000
Fiscal 2006 Contingent Reductions			
Administration	Reduction contingent on legislation authorizing the assessment of indirect costs on the health regulatory commissions	\$1,833,000	\$1,833,000
Development Disabilities	Reduction contingent on legislation funding the community placement of 40 Rosewood residents	1,227,038	1,227,038
Medicaid	Reduction contingent on legislation funding the Maryland Pharmacy Assistance Program with funds from the premium tax exemption on nonprofit health service plans	11,750,000	11,750,000
Medicaid	Reduction contingent on legislation increasing the co-pay in the Maryland Pharmacy Assistance Program for certain drugs	102,000	204,000
Medicaid	Reduction contingent on legislation allowing the department to expand estate recoveries	28,779	57,558
Departmental	Reduction contingent on legislation eliminating matching employee deferred compensation contributions	2,037,711	2,522,768
Fiscal 2006 Contingent Reductions Total		\$16,978,528	\$17,594,364

Source: Department of Legislative Services; State Budget

M00 – DHMH – Fiscal 2006 Budget Overview

**Department of Health and Mental Hygiene
Budget Overview: All Funding Sources
Fiscal 2004 – 2006
(\$ in Thousands)**

	<u>Actual</u> <u>FY 2004</u>	<u>Working</u> <u>FY 2005</u>	<u>Allowance</u> <u>FY 2006</u>	<u>\$ Change</u> <u>FY 05-06</u>	<u>% Change</u> <u>FY 05-06</u>
Medical Programs/Medicaid	\$3,831,471	\$4,055,900	\$4,298,397	\$242,496	6.0%
Provider Reimbursements	3,634,516	3,863,916	4,090,642	226,726	5.9%
Maryland Children's Health Program (MCHP)	132,072	124,925	141,768	16,843	13.5%
Other	64,884	67,060	65,987	-1,073	-1.6%
Mental Hygiene	\$828,524	\$809,507	\$804,018	-\$5,489	-0.7%
Program Direction	5,846	6,139	6,361	222	3.6%
Community Services	569,405	545,153	541,238	-3,915	-0.7%
Facilities	253,272	258,214	256,419	-1,795	-0.7%
Developmental Disabilities	\$565,416	\$602,085	\$635,728	\$33,642	5.6%
Program Direction	4,515	4,666	4,778	112	2.4%
Community Services	493,434	526,922	562,062	35,140	6.7%
Facilities	67,467	70,497	68,888	-1,609	-2.3%
Community/Family Health	\$279,430	\$269,606	\$269,593	-\$13	0.0%
Targeted Local Health	64,925	65,371	65,980	609	0.9%
Women, Infants, and Children	58,594	54,856	64,309	9,453	17.2%
Cigarette Restitution Fund (CRF)	45,150	37,933	29,605	-8,328	-22.0%
Other	110,761	111,446	109,698	-1,747	-1.6%
Alcohol and Drug Abuse	\$131,027	\$133,209	\$132,125	-\$1,084	-0.8%
Other Budget Areas	\$254,511	\$291,982	\$293,434	\$1,453	0.5%
DHMH Administration	42,829	42,639	38,411	-4,229	-9.9%
Office of Health Care Quality	13,193	13,996	14,064	69	0.5%
Health Occupations Boards	16,863	19,700	21,180	1,480	7.5%
Chronic Disease Hospitals	38,914	41,324	40,963	-361	-0.9%
AIDS Administration	47,786	53,828	54,328	500	0.9%
Chief Medical Examiner	6,941	7,353	7,752	399	5.4%
Laboratories Administration	21,552	20,820	20,137	-683	-3.3%
Health Regulatory Commissions	66,433	92,322	96,599	4,277	4.6%
Total Funding	\$5,890,378	\$6,162,289	\$6,433,295	\$271,006	4.4%

Note: Numbers may not sum to total due to rounding. Working appropriation includes proposed deficiency appropriations.

Source: Department of Legislative Services; State Budget

M00 – DHMH – Fiscal 2006 Budget Overview

**Department of Health and Mental Hygiene
Budget Overview: General Funds Only
Fiscal 2004 – 2006
(\$ in Thousands)**

	<u>Actual</u> <u>FY 2004</u>	<u>Working</u> <u>FY 2005</u>	<u>Allowance</u> <u>FY 2006</u>	<u>\$ Change</u> <u>FY 05-06</u>	<u>% Change</u> <u>FY 05-06</u>
Medical Programs/Medicaid	\$1,647,633	\$1,930,983	\$2,047,432	\$116,448	6.0%
Provider Reimbursements	1,568,743	1,853,008	1,973,761	120,754	6.5%
Maryland Children's Health Program (MCHP)	45,661	43,279	49,322	6,043	14.0%
Other	33,229	34,697	24,348	-10,349	-29.8%
Mental Hygiene	\$556,386	\$574,520	\$571,967	-\$2,552	-0.4%
Program Direction	4,613	5,124	4,976	-148	-2.9%
Community Services	303,139	319,214	320,641	1,427	0.4%
Facilities	248,634	250,182	246,351	-3,831	-1.5%
Developmental Disabilities	\$383,277	\$399,783	\$413,244	\$13,461	3.4%
Program Direction	4,173	4,240	4,336	96	2.3%
Community Services	312,282	325,746	340,755	15,009	4.6%
Facilities	66,822	69,797	68,153	-1,643	-2.4%
Community/Family Health	\$111,924	\$112,752	\$115,830	\$3,078	2.7%
Targeted Local Health	60,436	60,878	61,487	609	1.0%
Women, Infants, and Children	200	250	250	0	0.0%
Cigarette Restitution Fund (CRF)	0	0	0	0	0.0%
Other	51,288	51,624	54,093	2,469	4.8%
Alcohol and Drug Abuse	\$75,092	\$79,173	\$78,118	-\$1,055	-1.3%
Other Budget Areas	\$91,026	\$94,769	\$92,304	-\$2,465	-2.6%
DHMH Administration	21,875	21,839	19,705	-2,134	-9.8%
Office of Health Care Quality	8,323	8,496	8,532	35	0.4%
Health Occupations Boards	170	176	220	44	25.3%
Chronic Disease Hospitals	32,463	34,767	35,265	498	1.4%
AIDS Administration	5,718	5,630	4,997	-633	-11.2%
Chief Medical Examiner	6,620	7,109	7,468	359	5.1%
Laboratories Administration	15,858	16,752	16,117	-635	-3.8%
Health Regulatory Commissions	0	0	0	0	0.0%
Total Funding	\$2,865,339	\$3,191,980	\$3,318,895	\$126,915	4.0%

Note: Numbers may not sum to total due to rounding. Working appropriation includes proposed deficiency appropriations

Source: Department of Legislative Services; State Budget

M00 – DHMH – Fiscal 2006 Budget Overview

**Governor’s Proposed Budget Changes
Department of Health and Mental Hygiene
(\$ in Thousands)**

	General Fund	Special Fund	Federal Fund	Reimb. Fund	Total
2005 Working Appropriation	\$3,191,980	\$259,967	\$2,689,160	\$21,183	\$6,162,289
2006 Governor's Allowance	3,318,895	265,178	2,824,483	24,739	6,433,295
Amount Change	126,915	5,211	135,324	3,556	271,006
Percent Change	4.0%	2.0%	5.0%	16.8%	4.4%

Where It Goes:

Major Personnel Expense Changes	\$2,331	
Retirement contributions.....		\$4,245
Workers’ Compensation Premium Assessment.....		2,650
Turnover and cost containment.....		1,864
Social Security contributions		1,246
Overtime		1,164
Other adjustments		520
Regular earnings (increments and new positions offset by position abolitions).....		-3,995
Employee and retiree health insurance		-5,363
Tobacco Settlement Initiatives	-\$8,243	
Governor’s Initiative to Conquer Cancer in Maryland		-7,665
Governor’s Initiative to End Smoking in Maryland		-578
Major Programmatic Changes (Exc. Medical Care Programs Administration)	\$34,892	
Alcohol and Drug Abuse Administration		
Reduction in prevention funding		-1,040
Mental Hygiene Administration		
Community mental health fee-for-service funding for Medicaid-eligible individuals		27,380
Hospital drug costs.....		1,274
Transfer of Maryland Psychiatric Research Center grant to the University of Maryland, Baltimore		-3,810
Funding for prior year deficits and federal fund non-recoverables.....		-33,750
Developmental Disabilities Administration		
Wage initiative (Chapters 109 and 110, Acts of 2001).....		16,240
Annualization of prior year Waiting List Initiative placements.....		8,452

M00 – DHMH – Fiscal 2006 Budget Overview

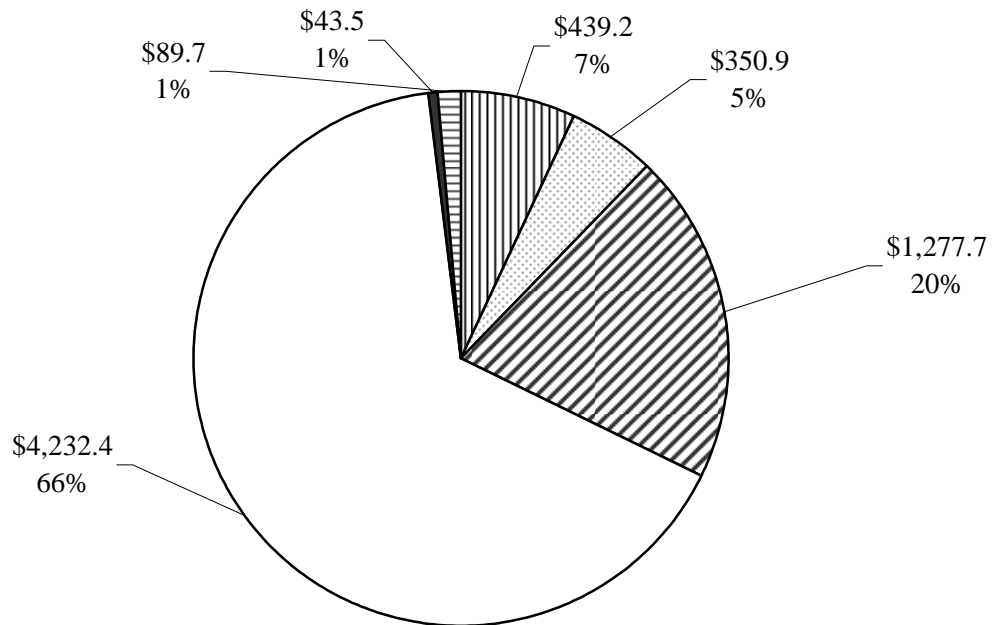
Where It Goes:

New community placements	6,031
Other funding for community services.....	2,682
Contingent reduction at Rosewood	-1,227
Community and Family Health Administrations	
Women, Infants, and Children (WIC)	9,453
Reduction in bioterrorism grants to local health departments.....	-1,762
Other Programs	
Health Regulatory Commissions: Increase in Uncompensated Care Fund.....	6,000
Departmentwide: Insurance coverage	882
AIDS Administration: Increase in federal HIV Care Formula Grant.....	748
DHMH Administration: Public Health Major Information Technology Projects	-2,661
Medicaid/Medical Care Programs Administration	\$241,658
Changes in medical inflation and enrollment growth.....	425,915
Physician rate increase – independent of funds provided in House Bill 2	37,000
Begin Medicaid buy-in-program for working disabled adults.....	4,000
Increase rates for personal care providers	2,000
Expand waiver for Older Adults by 175 slots	2,000
Cost containment actions – nursing homes/MCO/Project Integrity/other.....	-112,862
Pharmacy costs decline due to Medicare Drug Benefit (\$20 million of general funds)..	-93,154
Shift funding source for Senior Prescription Drug Program to MPAP	-11,750
Eliminate Rare and Expensive Case Management Program	-6,300
Reduce grants to local health departments for outreach, care coordination, transportation, and ombudsman.....	-5,191
Other	368
Total Change	\$271,006

Note: Numbers may not sum to total due to rounding.

Department of Health and Mental Hygiene

Fiscal 2006 Allowance Functional Breakdown of Spending (\$ in Millions)



- | | |
|---|---|
| ▣ Regular Salaries and Fringes | ▣ Misc. Overhead/Contractual Services |
| ▣ Purchase of Care (Exc. Medicaid/MCHP) | ▣ Medicaid (Provider Reimbursements)/MCHP |
| ▣ Medicine and Drugs | ▣ Grants |

M00 – DHMH – Fiscal 2006 Budget Overview

**Department of Health and Mental Hygiene
Regular Employees (FTE)
Fiscal 2003 – 2006**

	<u>Actual</u> <u>FY 2003</u>	<u>Actual</u> <u>FY 2004</u>	<u>Working</u> <u>FY 2005</u>	<u>Allowance</u> <u>FY 2006</u>	<u>Change</u> <u>FY 05-06</u>	<u>% Change</u> <u>FY 05-06</u>
DHMH Administration	546.3	500.9	473.5	464.5	-9.0	-1.9%
Office of Health Care Quality	202.8	184.4	183.4	182.4	-1.0	-0.5%
Health Occupations Boards	186.5	181.5	182.5	203.0	20.5	11.2%
Community and Family Health Administration	390.9	341.4	340.7	340.7	0.0	0.0%
AIDS Administration	74.0	64.0	62.0	58.0	-4.0	-6.5%
Chief Medical Examiner	75.0	76.0	76.0	76.0	0.0	0.0%
Chronic Hospitals	609.0	584.3	575.8	572.8	-3.0	-0.5%
Laboratories Administration	304.5	282.5	278.5	273.5	-5.0	-1.8%
Alcohol and Drug Abuse Administration	55.0	51.5	49.5	49.5	0.0	0.0%
Mental Hygiene Administration	3,749.7	3,530.5	3,401.2	3,386.6	-14.6	-0.4%
Developmental Disabilities Administration	1,346.5	1,249.2	1,240.2	1,235.2	-5.0	-0.4%
Medical Care Programs Administration	574.1	570.1	592.3	613.3	21.0	3.5%
Health Regulatory Commissions	97.7	93.6	92.6	92.6	0.0	0.0%
Total Regular Positions	8,211.9	7,709.8	7,548.1	7,548.0	-0.1	0.0%

Source: State Budget

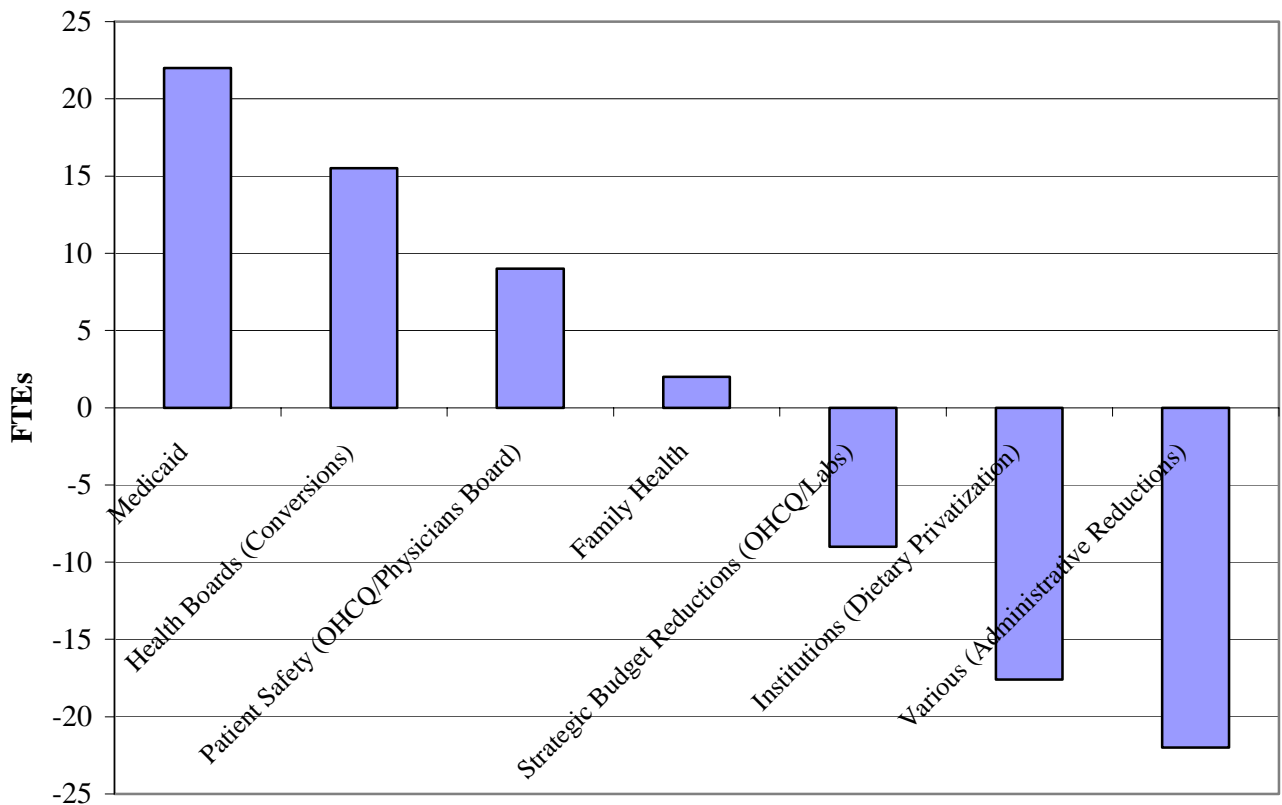
- The vacancy rate of the department as of December 31, 2004, was 7.81%, or 589.4 vacancies. The budgeted turnover rate for the department is 4.02%. To meet this turnover rate, the department on average requires 437.82 vacancies.
- Overall, the department's regular position allocation in the fiscal 2006 allowance remains virtually unchanged from the fiscal 2005 working appropriation. However, it should be noted that the fiscal 2005 working appropriation position count is down 204.3 FTE positions from the fiscal 2005 legislative appropriation. This change is derived as follows:
 - 133.3 FTE positions abolished as a result of the closure of Crownsville Hospital;

M00 – DHMH – Fiscal 2006 Budget Overview

- 72 FTE positions abolished by the Board of Public Works to meet the fiscal 2005 position cap; and
- The addition of one FTE position transferred from the Governor’s Office of Crime Control and Prevention.
- Although the regular position count proposed in the fiscal 2006 allowance is virtually unchanged from the fiscal 2005 working appropriation, there are some personnel changes as shown in **Exhibit 1**.

At this time the department is unsure how many, or if, lay-offs will occur as a result of these position abolitions. However, some of these positions are currently filled.

Exhibit 1
Department of Health and Mental Hygiene
Personnel Change (FTEs)
Fiscal 2005 to 2006



Source: Department of Health and Mental Hygiene; Department of Legislative Services

M00 – DHMH – Fiscal 2006 Budget Overview

**Department of Health and Mental Hygiene
Contractual Employees (FTE)
Fiscal 2003 – 2006**

	<u>Actual FY 2003</u>	<u>Actual FY 2004</u>	<u>Working FY 2005</u>	<u>Allowance FY 2006</u>	<u>Change FY 05-06</u>	<u>% Change FY 05-06</u>
DHMH Administration	17.2	15.5	20.7	17.7	-3.0	-14.5%
Office of Health Care Quality	2.6	3.1	6.4	5.4	-1.0	-15.6%
Health Occupations Boards	15.5	20.0	36.8	29.9	-7.0	-18.9%
Community and Family Health Administration	12.5	11.8	17.1	19.2	2.1	12.2%
AIDS Administration	0.0	0.0	0.0	0.0	0.0	0.0%
Chief Medical Examiner	1.1	1.5	1.3	7.5	6.2	463.9%
Chronic Hospitals	21.0	20.7	17.5	23.6	6.1	34.7%
Laboratories Administration	6.4	3.3	2.8	2.8	0.0	0.0%
Alcohol and Drug Abuse Administration	3.6	2.5	3.2	3.2	0.0	0.0%
Mental Hygiene Administration	187.4	220.1	189.8	195.9	6.1	3.2%
Developmental Disabilities Administration	49.3	69.0	105.1	105.1	0.0	0.0%
Medical Care Programs Administration	40.9	43.5	86.6	86.4	-0.2	-0.2%
Health Regulatory Commissions	0.0	0.0	2.0	2.0	0.0	0.0%
Total Contractual Positions	357.4	411.0	489.3	498.7	9.4	1.9%

Source: State Budget

M00 – DHMH – Fiscal 2006 Budget Overview

**Department of Health and Mental Hygiene
Fiscal 2003 – 2006
Budget Overview: Selected Caseload Measures**

	<u>Actual FY 2003</u>	<u>Actual FY 2004</u>	<u>Working FY 2005</u>	<u>Allowance FY 2006</u>	<u>Change FY 05-06</u>	<u>% Change FY 05-06</u>
Medical Programs/Medicaid						
Medicaid Enrollees	482,308	502,861	533,816	547,020	13,204	2.5%
Maryland Children's Healthcare Program	113,201	98,420	94,410	96,950	2,540	2.7%
Developmental Disabilities Administration						
Residential Services	4,529	4,634	4,814	4,930	116	2.4%
Day Services	8,274	8,623	9,457	9,633	176	1.9%
In-home Support Services	7,189	7,708	8,092	8,405	313	3.9%
Average Daily Census at Institutions	421	389	384	339	-45	-11.7%
Mental Hygiene Administration						
Average Daily Populations at State-run Psychiatric Hospitals						
Hospitals Excluding RICAs and Assisted Living	1,185	1,198	1,173	1,205	32	2.7%
RICAs	116	111	113	115	2	1.8%
Assisted Living	92	93	88	100	12	13.9%
Total	1,393	1,402	1,374	1,420	46	3.4%
Number Receiving Community Mental Health Services						
Medicaid eligible	78,924	76,383	79,400	82,500	3,100	3.9%
Medicaid-ineligible	13,403	13,038	13,600	14,200	600	4.4%
Total	92,327	89,421	93,000	96,700	3,700	4.0%
Alcohol and Drug Abuse Administration						
Residential services	7,366	9,349	9,536	9,577	41	0.4%
Outpatient services	31,461	35,747	36,462	37,191	729	2.0%

Source: Department of Legislative Services; Department of Health and Mental Hygiene

The State of the State's Health

There is no single way to measure the impact of the State's health spending on the overall health of Marylanders. Individual programs are often narrowly focused to meet certain well-defined needs. Health outcomes are heavily influenced by factors outside the immediate budget reach of public health programs. Nevertheless, rankings of the health of State populations can be, and are, created from available data sources. Such rankings provide a snapshot of the relative health of a State's population as well as a vehicle to promote and improve the general discussion of public health.

One of the more comprehensive nationwide health rankings is developed by the United Health Foundation (a nonprofit, private foundation established by UnitedHealth Group), the American Public Health Association (an organization representing public health professionals), and Partnership for Prevention (a national nonprofit organization dedicated to health improvement). Since 1990 in a publication entitled *America's Health: State Health Rankings*, the ranking has been produced using data that represent a broad range of issues affecting a population's health, that are available at a state level, and that are current. Data and the ranking methodology are regularly reviewed by a large panel of public health experts.

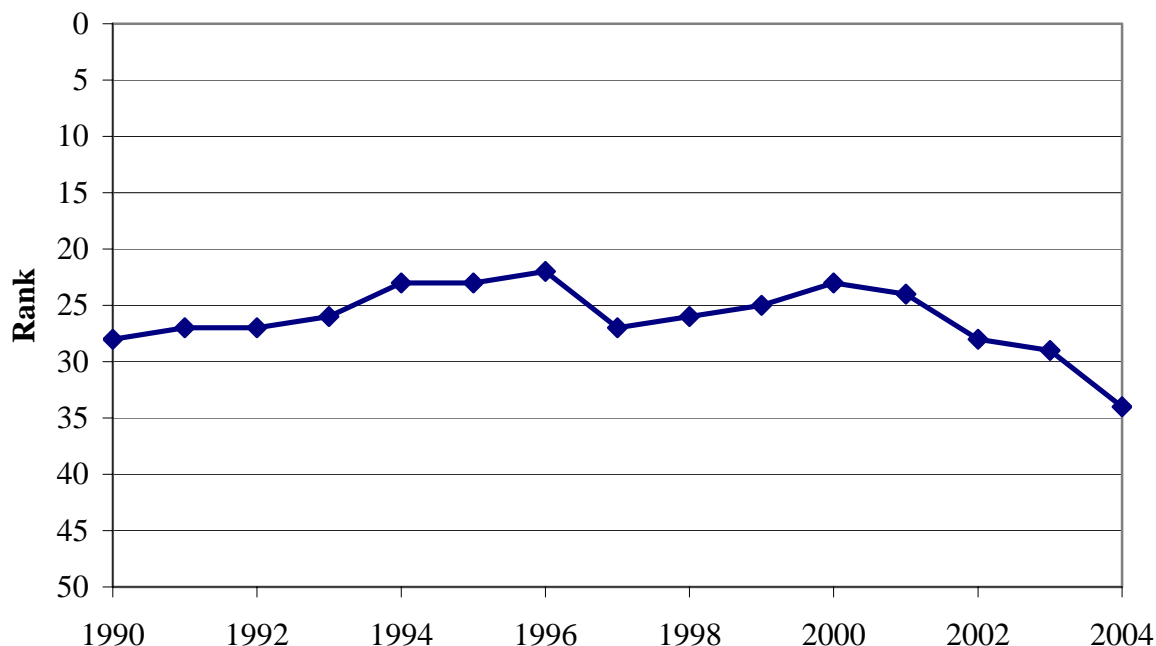
Data are collected in two broad categories:

- Risk factors which are in turn broken into three groupings:
 - Personal behaviors (prevalence of smoking, motor vehicle deaths, prevalence of obesity, and high school graduation);
 - Community environment (violent crime offenses, lack of health insurance, infectious disease, children in poverty, and occupational fatalities); and
 - Health policies (percent of health dollars for public health, per capita public health spending, and adequacy of prenatal care).
- Outcomes (limited activity days, cardiovascular deaths, cancer deaths, total mortality, infant mortality, and premature death).

Data for each component is appropriately adjusted and weighted. Risk factors ultimately contribute just under 60% of a State's overall score, with outcomes just over 40%.

As shown in **Exhibit 2**, in the 2004 edition of *America's Health*, Maryland's overall ranking based on these criteria is thirty-fourth, down from twenty-ninth in 2003. This ranking of thirty-fourth was the lowest in the 15 years this particular ranking has been done.

Exhibit 2
America Health: State Health Ranking – 1990 to 2004 – Maryland



Source: United Health Foundation

Separating risk factors from outcomes, Maryland ranks thirty-second for combined measures of risk factors and thirty-fourth for the combined measures of outcomes. This would indicate that the relative health of the population will likely remain at current levels in the near future.

Looking only at outcomes, the short-term data trends are actually more positive than negative. As shown in **Exhibit 3**, in only two of the six selected outcomes (limited activity days and infant mortality) are the trends worse from 2003 to 2004. However, in four of the six outcomes, Maryland's ranking drops, including cardiovascular and cancer deaths where outcomes improved from 2003 to 2004. This implies that even though Maryland's outcomes are improving, the rate of improvement is slower than in other states.

Long-term outcome trends (2004 results compared to 1990 results) are all positive. Additionally, for the most part Maryland's ranking has also improved: in four categories the State's ranking has improved, particularly in the area of cancer deaths; in only one category has the ranking fallen (cardiovascular deaths) and even here the drop is marginal; and the State's relative infant mortality ranking has remained unchanged.

Exhibit 3
Various Health Outcomes
U.S. and Maryland: 1990, 2003, and 2004

<u>Outcome</u>	<u>1990</u>		<u>2003</u>		<u>2004</u>		<u>U.S.</u>
	<u>MD</u>	<u>MD Rank</u>	<u>MD</u>	<u>MD Rank</u>	<u>MD</u>	<u>MD Rank</u>	
Limited Activity Days (Days in Last 30 Days)	3.9	25	1.6	7	2.0	18	2.1
Cardiovascular Deaths (Deaths per 100,000 Population)	409.0	28	329.3	25	328.6	29	336.6
Cancer Deaths (Deaths per 100,000 Population)	219.7	49	210.8	31	208.4	32	204.1
Total Mortality (Deaths per 100,000 Population)	912.2	35	867.8	27	864.1	27	867.1
Infant Mortality (Deaths per 1,000 Live Births)	11.6	41	7.8	37	8.2	41	7.7
Premature Death (Years lost per 100,000 Population)	9,145	36	8,138	35	8,071	34	7,521

Note: Year refers to year that the ranking is made. The data used to make that ranking are the most current available.

Source: America's Health: State Health Rankings – 2004 Edition

M00 – DHMH – Fiscal 2006 Budget Overview

Interestingly, looking only at risk factors, short-term data trends are much more mixed. As shown in **Exhibit 4**, five show improvement from 2003 to 2004; one (motor vehicle deaths) remains the same, and six worsen (obesity, high school graduation, health insurance coverage, infectious diseases, children in poverty, and occupational fatalities). Long-term data trends are also more mixed. For the 10 categories of data available, 4 actually worsen between 1990 and 2004: obesity, violent crime offenses, health insurance coverage, and infectious diseases. This perhaps underscores the point that in a broader sense, the health of the State's population relies on many factors other than public health spending.

Exhibit 4
Various Risk Factors
U.S. and Maryland: 1990, 2003, and 2004

<u>Risk Factor</u>	<u>1990</u>		<u>2003</u>		<u>2004</u>		<u>U.S.</u>
	<u>MD</u>	<u>MD Rank</u>	<u>MD</u>	<u>MD Rank</u>	<u>MD</u>	<u>MD Rank</u>	
Prevalence of Smoking (% of Population)	29.7	26	21.9	15	20.1	12	22.0
Motor Vehicle Deaths (Deaths Per 100 Million Miles Driven)	2.0	11	1.2	9	1.2	10	1.6
Prevalence of Obesity (% of Population)	12.0	29	19.4	12	21.9	23	22.8
High School Graduation (% of Incoming 9th Graders)	76.5	25	74.4	18	74.1	18	68.3
Violent Crime (Offenses Per 100,000 Population)	768.0	45	783.0	49	770.0	48	495.0
Lack of Health Insurance (% without Coverage)	8.9	11	13.4	24	13.9	23	15.6
Infectious Disease (Cases per 100,000 Population)	41.1	38	43.6	47	43.9	49	26.1
Children in Poverty (% of Persons Under 18)	16.4	17	7.6	1	10.6	4	17.6
Occupational Fatalities (Deaths Per 100,000 Workers)	5.7	5	3.5	4	3.7	7	4.6
Health Dollars Spent on Public Health (% of Health Expenditures)	n/a	n/a	6.1	17	6.3	21	6.1
Per Capita Health Spending (\$ Per Person)	n/a	n/a	52.0	18	61.0	22	59.0
Adequacy of Prenatal Care (% of Pregnant Women Receiving Adequate Care)	75.3	11	74.5	29	75.4	27	76.2

Note: Year refers to year that the ranking is made. The data used to make that ranking are the most current available.

Source: America's Health: State Health Rankings – 2004 Edition