
Higher Education Fiscal 2003 Budget Overview

**Department of Legislative Services
Office of Policy Analysis
Annapolis, Maryland**

January 2002

Higher Education - Fiscal 2003 Budget Overview

Higher Education

Fiscal 2003 Budget Overview

Components of General Fund Change Fiscal 2002 Appropriated - Fiscal 2002 Revised - Fiscal 2003 Allowance (\$ in Thousands)

	<u>General Funds</u>	<u>% Change from Legis. 2002</u>	<u>% Change from Revised 2002</u>
Fiscal 2002 Legislative Appropriation for Public Universities	\$944,591		
Cost Containment	(4,488)		
Hiring Freeze ¹	(8,581)		
Fiscal 2002 Revised Appropriation for Public Universities	\$931,522	(1.4)%	-
University System of Maryland			
Annualize Fiscal 2002 Cost-of-living Adjustment (COLA)	16,958		
Debt Service and New Facilities Costs	15,817		
Other Current Services Budget Request	19,272		
Initiatives	300		
Subtotal, University System of Maryland	\$52,347		
St. Mary's College			
(Formula Increase and Enrollment Expansion)	\$717		
Morgan State University			
(2002 COLA, Scholarship Inflation, Faculty/Staff Salary Increases)	\$3,430		
2003 Cost Containment	(\$22,726)		
Net Increase for Public Universities	\$33,768	2.2%	
Total Allowance	\$965,290		3.6%
Other General Fund Constraint			
2003 Fund Balance ^{1,2}	(16,600)		
Net 2003 State Support³	\$948,690	0.4%	1.84%

¹Anticipated.

²Requires legislation.

³Funding for a COLA, effective January 1, 2003, is included in the allowance for the Department of Budget and Management.

Source: Maryland State Budget, fiscal 2003, and Department of Budget and Management

Higher Education - Fiscal 2003 Budget Overview

Increases in the Fiscal 2003 Allowance for Other Higher Education Programs
Fiscal 2002 Revised - Fiscal 2003 Allowance
(\$ in Thousands)

		% Increase <u>over</u> <u>2002</u>
Fiscal 2002 Revised Appropriation for Other Higher Education Programs	\$350,157	
Grants and Scholarships		
HOPE	5,600	27.0%
Other Scholarships	1,430	2.4%
Other Grants	8,310	56.4%
Formula Grants		
Aid to Private Colleges and Universities	6,255	13.6%
Aid to Community Colleges	26,878	15.1%
Baltimore City Community College	6,196	7.7%
Total Increase in Other Higher Education Expenditures	\$54,669	15.6%
Budgeted Fiscal 2003 State Support for Other Higher Education Programs	\$404,826	
Proposed General Fund Reductions (requires legislation)		
Aid to Private Colleges and Universities	(3,195)	
Aid to Community Colleges	(15,388)	
Private Donation Incentive Grant Program	(6,570)	
Aid to Baltimore City Community College	(5,007)	
Net Increase in Other Higher Education Expenditures	\$24,509	7.0%
Net 2003 State Support for Other Higher Education Programs	\$374,666	

Note: Includes general, special, and CRF funds. Numbers may not sum to total due to rounding.

Source: Maryland State Budget, fiscal 2003, and Department of Budget and Management

Higher Education - Fiscal 2003 Budget Overview

General Fund Support for Higher Education Institutions
FY 1999 through 2003 Allowance
(\$ in Thousands)

<u>Institution</u>	<u>FY 1999 Actual</u>	<u>FY 2002 Working*</u>	<u>FY 2003 Allowance</u>	<u>2002-2003 Increment</u>	<u>Annual % 1999-2002</u>	<u>Annual % 2002-2003</u>
University of Maryland, Baltimore	\$116,412	\$153,139	\$157,313	\$4,173	9.6%	2.7%
University of Maryland, College Park	273,232	359,339	372,912	13,573	9.6%	3.8%
Bowie State University	16,330	22,725	22,988	263	11.6%	1.2%
Towson University	51,297	68,062	70,341	2,278	9.9%	3.3%
University of Maryland Eastern Shore	18,542	23,564	23,895	330	8.3%	1.4%
Frostburg State University	21,884	28,660	29,364	705	9.4%	2.5%
Coppin State College	14,504	20,513	20,931	418	12.2%	2.0%
University of Baltimore	20,510	24,474	24,673	199	6.1%	0.8%
Salisbury State University	22,179	29,500	31,182	1,682	10.0%	5.7%
University of Maryland University College	7,374	16,928	17,524	596	31.9%	3.5%
University of Maryland Baltimore County	50,975	75,818	80,558	4,740	14.1%	6.3%
University of Maryland Center for Environmental Science	10,709	13,479	14,515	1,036	8.0%	7.7%
University of Maryland Biotechnology Institute	18,787	16,468	17,164	696	-4.3%	4.2%
University System of Maryland Office	8,869	12,096	12,503	407	10.9%	3.4%
Subtotal, University System of Maryland	\$651,603	\$864,765	\$895,863	\$31,098	9.9%	3.6%
St. Mary's College	\$12,463	\$14,722	\$15,311	\$589	5.7%	4.0%
Morgan State University	38,358	52,035	54,116	2,081	10.7%	4.0%
Total	\$702,424	\$931,522	\$965,290	\$33,768	9.9%	3.6%

*Reflects anticipated hiring freeze savings.

Source: Maryland State Budget, fiscal 2001 through 2003

Higher Education - Fiscal 2003 Budget Overview

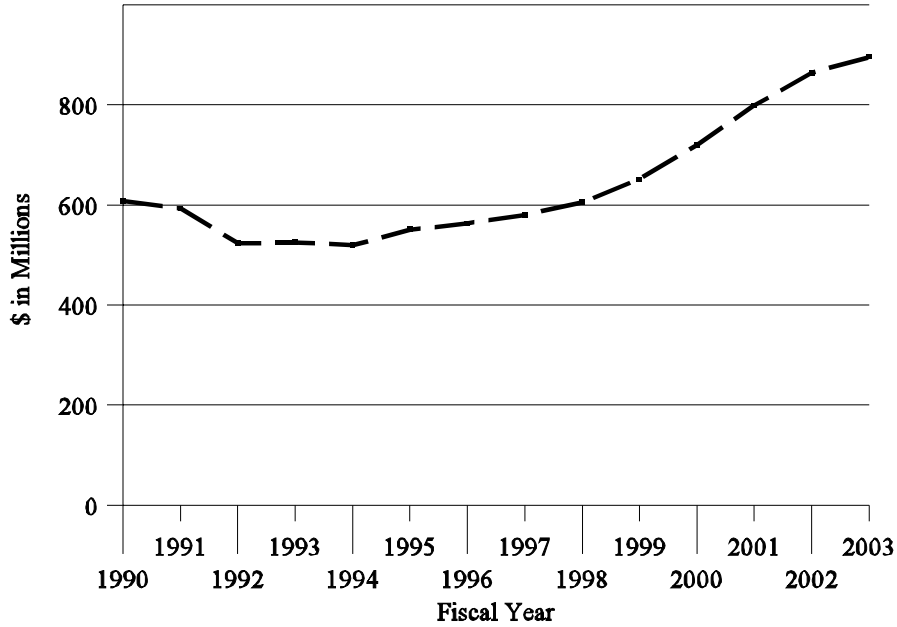
**2002 General Fund Adjustments
University System of Maryland, Morgan State University, and
St. Mary's College of Maryland**

<u>Institution</u>	<u>2002 Legislative</u>	<u>Cost Containment</u>	<u>Hiring Freeze*</u>	<u>2002 Projected</u>
University of Maryland, Baltimore	\$155,346	(\$734)	(\$1,473)	\$153,139
University of Maryland, College Park	364,516	(1,722)	(3,455)	359,339
Bowie State University	23,052	(109)	(219)	22,725
Towson University	69,043	(326)	(654)	68,062
University of Maryland Eastern Shore	23,904	(113)	(227)	23,564
Frostburg State University	29,073	(137)	(276)	28,660
Coppin State College	20,809	(98)	(197)	20,513
University of Baltimore	24,826	(117)	(235)	24,474
Salisbury University	29,925	(141)	(284)	29,500
University of Maryland University College	17,172	(81)	(163)	16,928
University of Maryland Baltimore County	76,910	(363)	(729)	75,818
University of Maryland Center for Environmental Science	13,673	(65)	(130)	13,479
University of Maryland Biotechnology Institute	16,705	(79)	(158)	16,468
University System of Maryland Office	12,270	(58)	(116)	12,096
Subtotal, University System of Maryland	\$877,223	(\$4,143)	(\$8,315)	\$864,765
St. Mary's College of Maryland	\$14,793	(\$71)	\$0	\$14,722
Morgan State University	52,574	(274)	(266)	52,035
Total	\$944,591	(\$4,488)	(\$8,581)	\$931,522

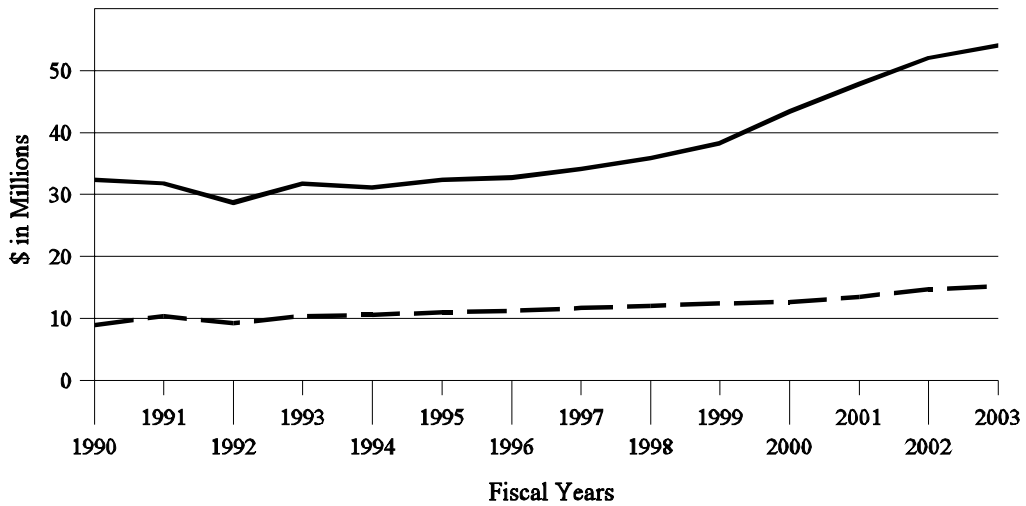
*Although the hiring freeze is in effect, the savings associated with it have not yet been removed from the budget.

Trends in General Fund Support for Higher Education

University System of Maryland



St. Mary's College and Morgan State University



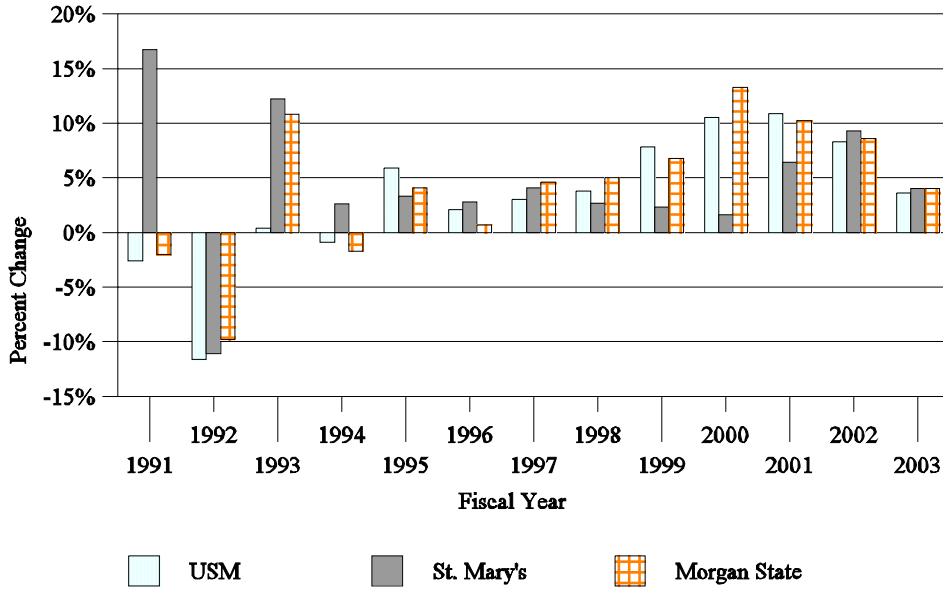
— Morgan State - - - St. Mary's

Prepared by: Department of Legislative Services, January 2002

Source: Maryland State Budget, fiscal 1993 through 2003

Trends in General Fund Support for Four-year, Public Higher Education Institutions

Annual Percent Change



Prepared by: Department of Legislative Services

Source: Maryland State Budget, fiscal 1993 through 2002

Higher Education - Fiscal 2003 Budget Overview

Trends in Education and General Expenditures¹
University System of Maryland, Morgan State University, and St. Mary's College of Maryland
Fiscal 2001 Actual - Fiscal 2002 Revised - Fiscal 2003 Allowance
(\$ in Thousands)

<u>Institution</u>	<u>FY2001 Actual</u>	<u>FY2002 Revised</u>	<u>FY2003 Allowance</u>	<u>\$ Change 2002-2003</u>	<u>Annual % 2001-2003</u>
UM Baltimore	\$285,347	\$305,887	\$314,850	\$8,963	5.0%
UM College Park	610,054	640,886	663,691	22,805	4.3%
Bowie State University	39,731	42,576	41,795	(781)	2.6%
Towson University	144,167	150,889	158,700	7,811	4.9%
UM Eastern Shore	37,309	38,434	39,270	837	2.6%
Frostburg State University	47,711	48,956	50,200	1,245	2.6%
Coppin State College	27,944	31,906	32,690	785	8.2%
University of Baltimore	47,946	51,579	53,672	2,093	5.8%
Salisbury University	53,709	56,570	60,402	3,832	6.0%
UM University College	73,231	81,290	86,893	5,603	8.9%
UM Baltimore County	133,778	150,282	158,365	8,082	8.8%
UMCES	17,489	17,824	18,730	907	3.5%
UMBI	21,110	25,663	24,293	(1,370)	7.3%
USM Subtotal	\$1,539,525	\$1,642,740	\$1,703,552	\$60,812	5.2%
St. Mary's College	\$29,383	\$31,369	\$32,036	\$667	4.4%
Morgan State University	84,109	88,921	92,852	3,930	5.1%
Total Higher Education	\$1,653,017	\$1,763,030	\$1,828,439	\$65,409	5.2%

¹Education and general expenditures represent current unrestricted revenues less auxiliary enterprises program expenditures. Fiscal 2002 figures do not reflect anticipated hiring freeze savings. Numbers may not sum to total due to rounding.

Source: Maryland State Budget, fiscal 2003

Higher Education - Fiscal 2003 Budget Overview

**Education and General Expenditures¹
Per Full-time Equivalent Student**

**University System of Maryland, Morgan State University, and St. Mary's College of Maryland
Fiscal 1998 Actual - Fiscal 2002 Revised - Fiscal 2003 Allowance**

	FY 1998 <u>Actual</u>	FY2001 <u>Actual</u>	FY2002 <u>Revised</u>	FY2003 <u>Allowance</u>	Annual % <u>1998-2002</u>	% Change <u>2002-2003</u>
UM Baltimore	43,431	54,218	58,120	60,432	7.6%	4.0%
UM College Park	18,663	22,942	23,967	24,742	6.5%	3.2%
Bowie State University	9,334	12,324	13,190	12,634	9.0%	(4.2%)
Towson University	9,271	11,087	11,422	11,795	5.4%	3.3%
UM Eastern Shore	10,131	12,362	12,618	12,603	5.6%	(0.1%)
Frostburg State University	9,214	11,137	11,314	11,487	5.3%	1.5%
Coppin State College	8,703	9,966	11,318	11,482	6.8%	1.5%
University of Baltimore	12,907	15,417	16,276	16,793	6.0%	3.2%
Salisbury University	8,462	9,797	10,005	10,330	4.3%	3.2%
UM University College ²	7,164	8,850	9,153	8,417	6.3%	(8.0%)
UM Baltimore County	13,356	15,839	17,252	17,635	6.6%	2.2%
Average, USM (weighted)	13,694	16,722	17,694	18,032	6.6%	1.9%
St. Mary's College	14,263	18,884	19,186	18,518	7.7%	(3.5%)
Morgan State University	11,906	14,784	15,174	15,460	6.3%	1.9%
Higher Education Average (weighted)	13,600	16,739	17,615	17,871	6.7%	1.5%

¹Education and general expenditures represent current unrestricted revenues less auxiliary enterprises program expenditures. Fiscal 2002 figures do not reflect hiring freeze savings.

²Stateside only.

Source: Department of Budget and Management

Higher Education - Fiscal 2002 Budget Overview

**Fiscal 2003 Expenditures Per Full-time Equivalent Student
University System of Maryland, Morgan State University, and St. Mary's College**

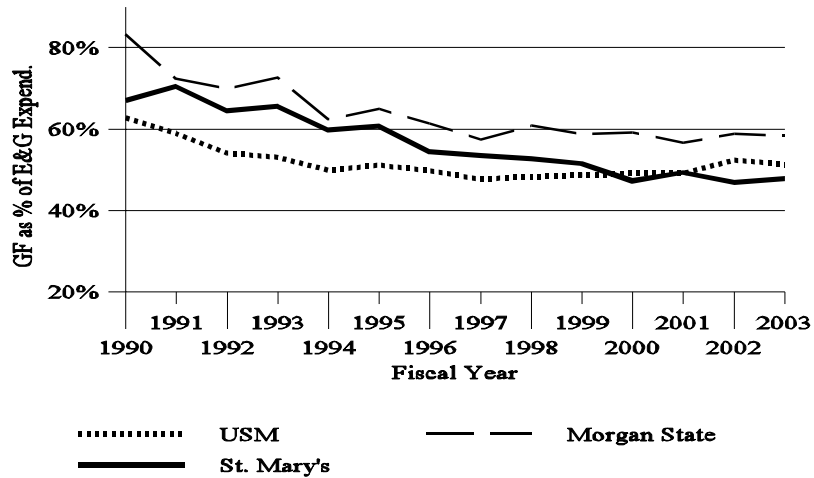
	<u>Educational & General (E&G) Expenditures</u>	<u>General Funds</u>	<u>Tuition and Fees</u>	<u>Full-time Equivalent Students</u>	<u>E&G Expenditures per FTES</u>	<u>General Funds per FTES</u>	<u>Tuition and Fees per FTES</u>	<u>GF as % of E&G</u>	<u>T&F as % of E&G</u>
UM Baltimore	\$314,850,129	\$157,312,815	\$48,605,331	\$5,210	\$60,432	\$30,194	\$9,329	50.0%	15.4%
UM College Park	663,690,750	372,911,695	218,908,879	26,825	24,742	13,902	8,161	56.2%	33.0%
Bowie State University	41,794,542	22,988,332	17,965,363	3,308	12,634	6,949	5,431	55.0%	43.0%
Towson University	158,700,121	70,340,574	82,626,334	13,455	11,795	5,228	6,141	44.3%	52.1%
UM Eastern Shore	39,270,078	23,894,916	14,232,393	3,116	12,603	7,668	4,568	60.8%	36.2%
Frostburg State University	50,200,206	29,364,407	20,626,801	4,370	11,487	6,720	4,720	58.5%	41.1%
Coppin State College	32,690,475	20,931,421	11,534,560	2,847	11,482	7,352	4,051	64.0%	35.3%
University of Baltimore	53,672,007	24,672,648	26,986,759	3,196	16,793	7,720	8,444	46.0%	50.3%
Salisbury University	60,401,996	31,181,989	29,051,172	5,847	10,330	5,333	4,969	51.6%	48.1%
UM University College	86,893,066	17,524,306	150,432,251	10,324	8,417	1,697	14,571	20.2%	173.1%
UM Baltimore County	158,364,817	80,557,763	55,925,210	8,980	17,635	8,971	6,228	50.9%	35.3%
USM Total/Average	\$1,660,528,187	\$851,680,866	\$676,895,053	\$87,478	\$18,032	\$9,249	\$6,965	51.3%	40.8%
St. Mary's College	\$32,036,167	\$15,310,796	\$13,147,271	\$1,730	\$18,518	\$8,850	\$7,600	47.8%	41.0%
Morgan State University	92,851,662	54,115,989	33,780,291	6,006	15,460	9,010	5,624	58.3%	36.4%
Higher Education Total/Average	\$1,785,416,016	\$921,107,651	\$723,822,615	\$95,214	\$17,871	\$9,200	\$6,910	51.6%	40.5%

Notes: General Funds Averages include only those institutions indicated.

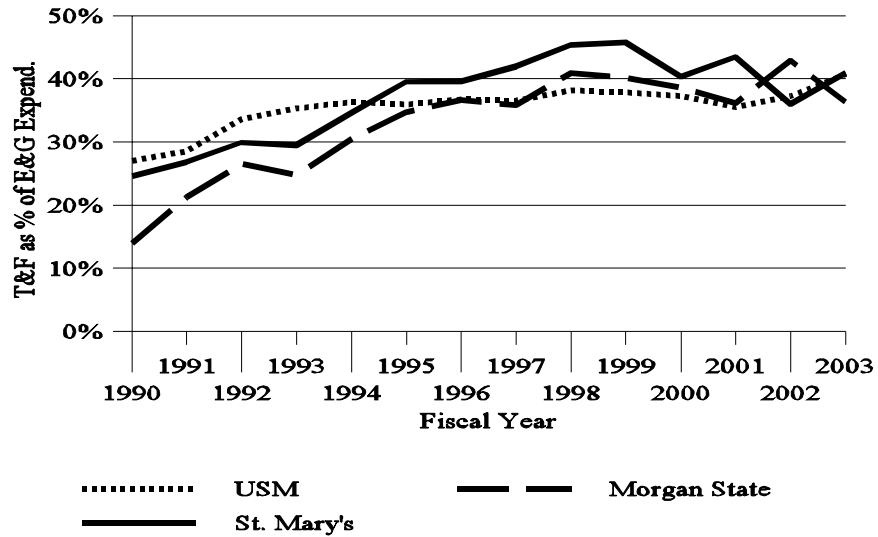
Source: Maryland State Budget, fiscal 2003

Revenue Sources as a Percentage of Education and General (E&G) Expenditures

General Funds



Tuition and Fee Revenues



Source: Maryland State Budget, fiscal 1993 through 2003

Higher Education - Fiscal 2003 Budget Overview

Higher Education Enrollment Trends
Full-time Equivalent Students
Undergraduate and Graduate Students

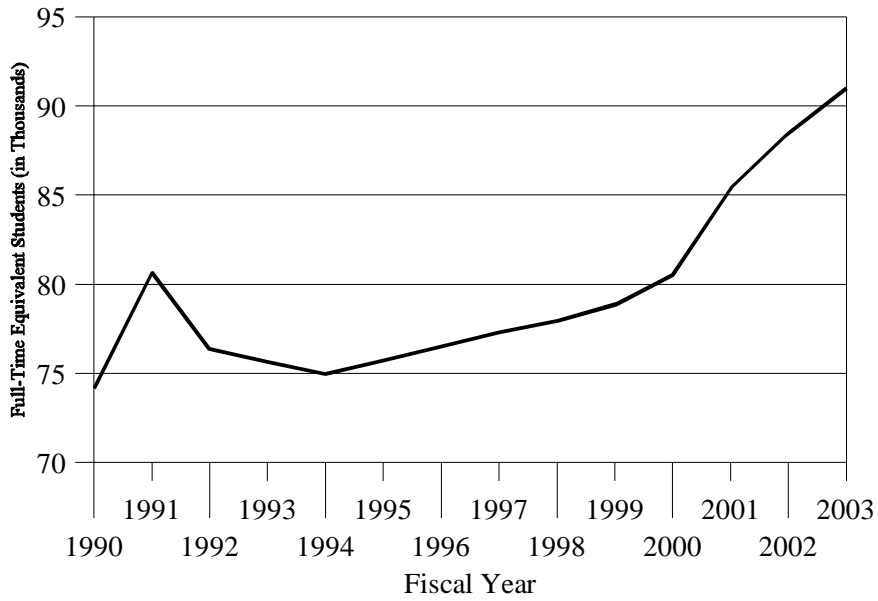
<u>Institution</u>	<u>FY 1999 Actual</u>	<u>FY 2002 Approp</u>	<u>FY 2003 Request</u>	<u>Change 2002-2003</u>	<u>Annual % 1999-2002</u>	<u>% Change 2002-2003</u>
UM Baltimore	5,244	5,263	5,210	(53)	0.1%	(1.0)%
UM College Park	25,830	26,740	26,825	276	1.2%	1.0%
Bowie State University	3,326	3,228	3,308	80	(1.0)%	2.5%
Towson University	12,309	13,094	13,455	361	2.1%	2.8%
UM Eastern Shore	3,031	3,046	3,116	70	0.2%	2.3%
Frostburg State University	4,181	4,327	4,370	43	1.2%	1.0%
Coppin State College	2,753	2,819	2,847	28	0.8%	1.0%
University of Baltimore	3,035	3,169	3,196	27	1.5%	0.9%
Salisbury University	5,049	5,654	5,847	193	3.8%	3.4%
UM University College ¹	7,763	12,413	13,666	1,253	16.9%	10.1%
UM Baltimore County	7,795	8,711	8,980	269	3.8%	3.1%
USM Subtotal	78,841	88,464	91,011	2,547	3.9%	2.9%
St. Mary's College	1,690	1,635	1,730	95	(1.1)%	5.8%
Morgan State University	5,415	5,860	6,006	146	2.7%	2.5%
Total Higher Education	85,946	95,959	98,747	2,788	3.7%	2.9%

¹UMUC stateside enrollment only.

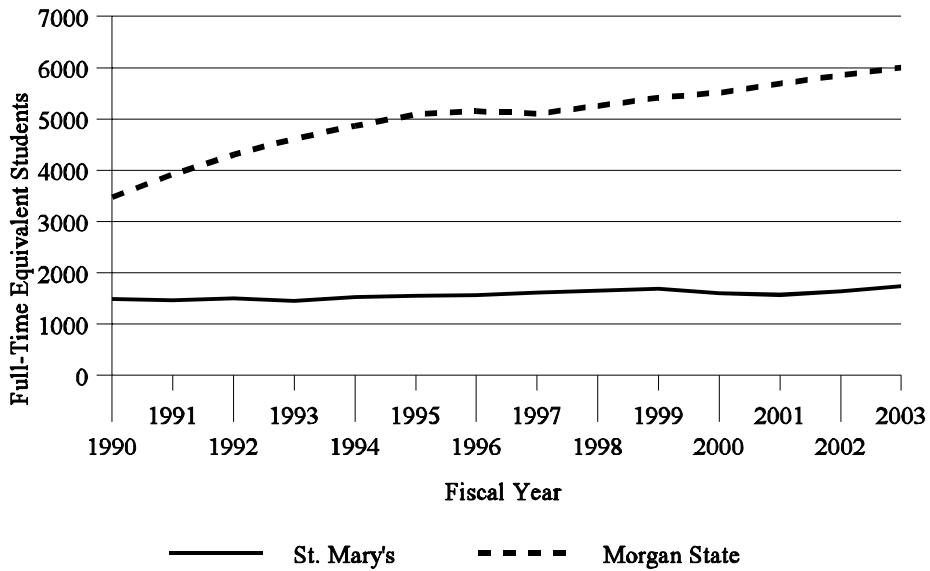
Source: Department of Budget and Management

Higher Education - Fiscal 2003 Budget Overview

**Enrollment Trends Since the 1990s
University System of Maryland**



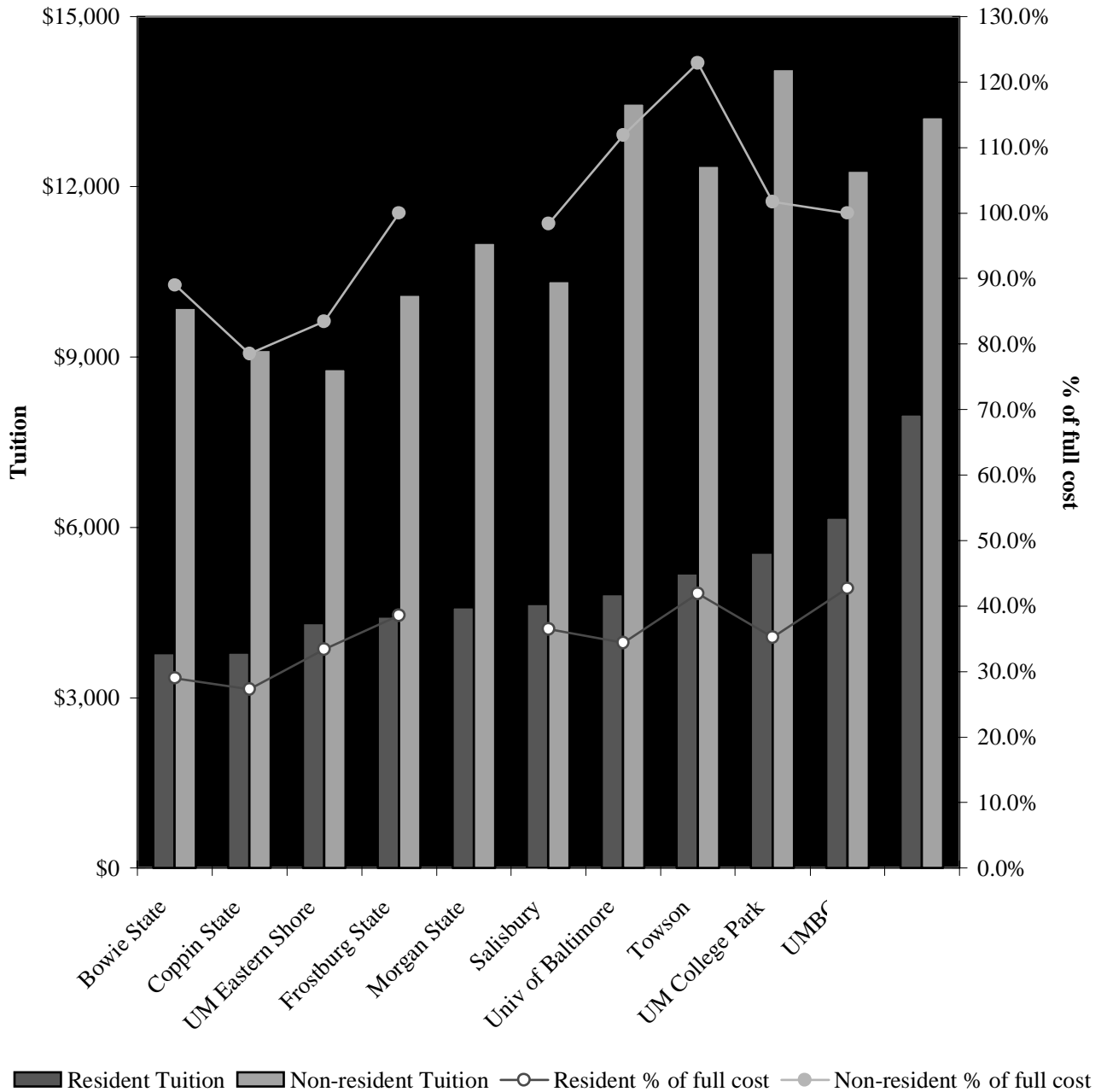
St. Mary's College and Morgan State University



Source: Maryland State Budget, fiscal 1993 through 2003

Higher Education - Fiscal 2003 Budget Overview

2003 Tuition and Fees for Full-time Undergraduate Students
University System of Maryland, Morgan State University, and St. Mary's College



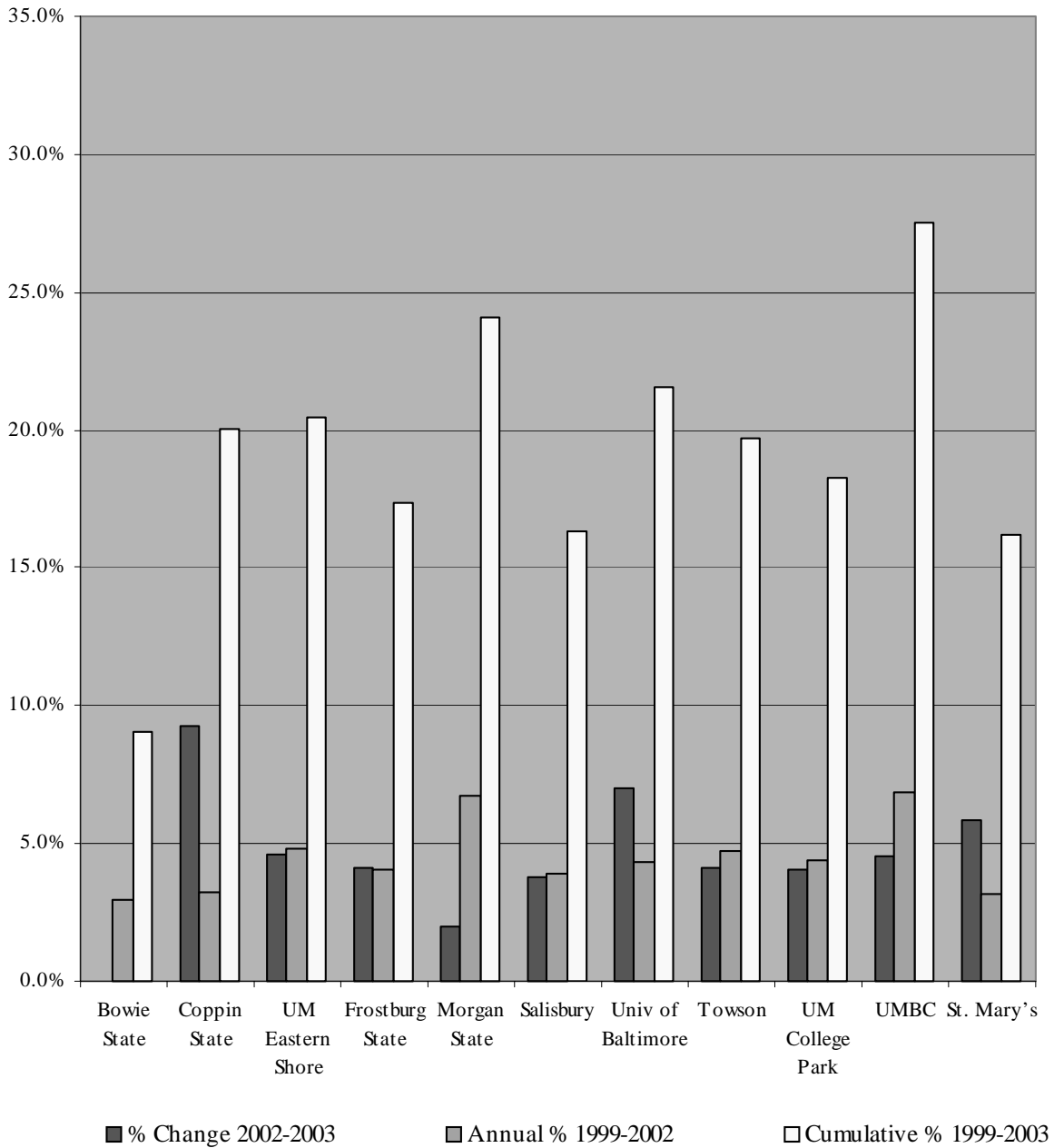
Notes: Data exclude University of Maryland, Baltimore and University of Maryland University College.

On June 11, 1993, the USM Board of Regents adopted a policy where, by fiscal 1998, non-resident tuition would equal 100% of the cost of education, and resident tuition would range between 30% and 45%.

Source: Maryland State Budget, fiscal 1999 through 2003; University System of Maryland Office

Higher Education - Fiscal 2003 Budget Overview

2003 Tuition and Fee Increases for Resident Full-time Undergraduate Students
University System of Maryland, Morgan State University, and St. Mary's College



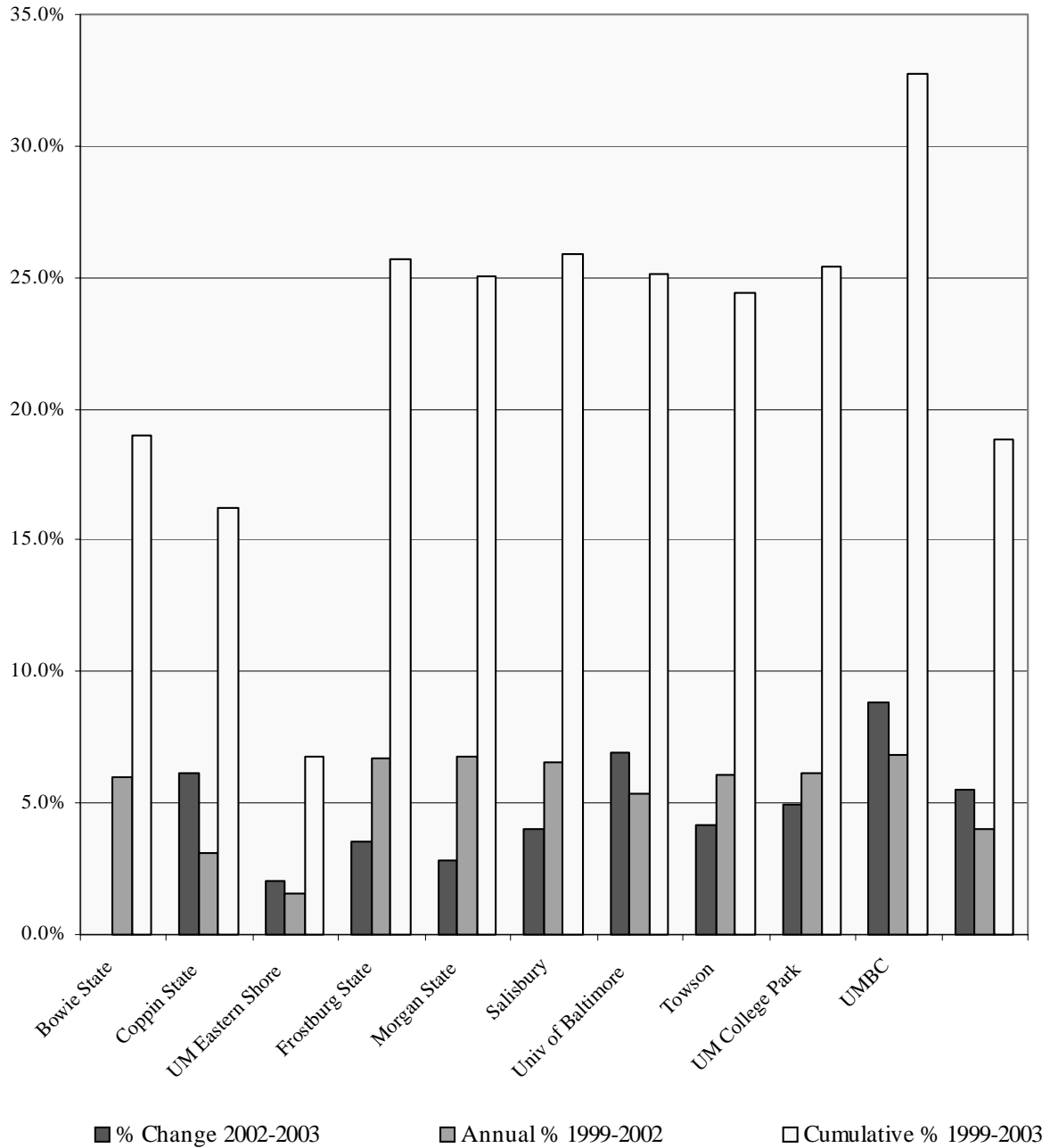
Notes: Data exclude University of Maryland, Baltimore and University of Maryland University College.

On June 11, 1993, the USM Board of Regents adopted a policy where, by fiscal 1998, non-resident tuition would equal 100% of the cost of education, and resident tuition would range between 30% and 45%.

Source: Maryland State Budget, fiscal 1999 through 2003

Higher Education - Fiscal 2003 Budget Overview

2003 Tuition and Fee for Non-resident Full-time Undergraduate Students
 University System of Maryland, Morgan State University, and St. Mary's College



Notes: Data exclude University of Maryland, Baltimore and University of Maryland University College.

On June 11, 1993, the USM Board of Regents adopted a policy where, by fiscal 1998, non-resident tuition would equal 100% of the cost of education, and resident tuition would range between 30% and 45%.

Source: Maryland State Budget, fiscal 1999 through 2003

Higher Education - Fiscal 2003 Budget Overview

Higher Education Trends
Scholastic Aptitude Test Scores of First-year Students

<u>Institution</u>	<u>Fall</u> <u>1994</u>	<u>Fall</u> <u>1995</u>	<u>Fall</u> <u>1996</u>	<u>Fall</u> <u>1997</u>	<u>Fall</u> <u>1998</u>	<u>Fall</u> <u>1999</u>	<u>Fall</u> <u>2000</u>
UM College Park	1,093	1,111	1,192	1,199	1,209	1,232	1,244
Bowie State University	774	772	901	922	908	921	921
Towson University	967	998	1,084	1,094	1,089	1,077	1,096
UM Eastern Shore	743	748	852	862	858	847	824
Frostburg State University	901	916	978	993	985	981	997
Coppin State College	791	797	835	886	889	879	872
Salisbury University	1,084	1,085	1,132	1,112	1,120	1,123	1,121
UM Baltimore County	1,093	1,111	1,178	1,177	1,167	1,172	1,186
St. Mary's College	1,170	1,215	1,249	1,250	1,237	1,236	1,222
Morgan State University	864	854	957	941	937	947	953
Average (not weighted)	989	997	1,092	1,099	1,097	1,106	1,110

Source: Maryland Higher Education Commission

Higher Education - Fiscal 2003 Budget Overview

**Higher Education Trends
Student to Faculty Ratio**

<u>Institution</u>	<u>FY 1999</u>	<u>FY 2000</u>	<u>FY 2001</u>	<u>FY 2002</u>	<u>FY 2003</u>
UM College Park	10.8	10.7	10.8	10.8	12.0
Bowie State University	15.0	14.3	14.1	14.3	16.0
Towson University	17.1	17.4	17.9	17.9	16.8
UM Eastern Shore	16.0	14.2	14.1	14.0	16.6
Frostburg State University	17.4	17.5	17.9	18.1	18.0
Coppin State College	16.3	19.2	20.2	18.3	21.1
University of Baltimore	15.2	14.5	14.9	14.9	14.9
Salisbury University	16.0	16.8	16.6	16.7	16.0
UM Baltimore County	16.4	15.6	16.2	15.8	16.4
System Average¹	14.3	14.2	14.5	14.5	15.0
St. Mary's College	13.3	12.4	12.2	12.4	12.9
Morgan State University	15.0	14.8	15.0	15.0	14.9
Four-year Average	14.3	14.3	14.5	14.5	14.9
UM Baltimore	6.5	6.3	6.4	6.3	6.2
UM University College ²	23.7	22.6	20.6	21.8	21.3

Notes: ¹Average weighted by students.
²UMUC statewide enrollment only.

Source: Department of Budget and Management

Higher Education - Fiscal 2003 Budget Overview

Higher Education Trends
Six-year Graduation Rate for First-time Full-time Students

<u>Institution</u>	<u>1990</u>	<u>1991</u>	<u>1992</u>	<u>1993</u>	<u>1994</u>
UM College Park	61.7	62.8	63.6	63.0	63.3
Bowie State University	35.9	38.9	38.1	34.4	42.3
Towson University	64.8	60.6	63.2	62.2	59.1
UM Eastern Shore	33.2	35.3	34.5	40.7	41.0
Frostburg State University	63.2	60.2	63.1	56.6	59.8
Coppin State College	22.1	27.0	21.2	18.8	25.3
Salisbury University	65.1	65.2	68.6	65.6	70.6
UM Baltimore County	58.0	54.2	57.4	60.1	58.7
St. Mary's College	81.4	81.1	77.3	76.5	73.1
Morgan State University	32.5	36.5	39.2	40.3	40.0
Public, Four-year Campus Average (All Students)	55.8	55.1	56.2	55.4	56.7

Note: The data show the percentage of students who had graduated from any campus within six years after starting in the year and institution indicated.

Source: Maryland Higher Education Commission